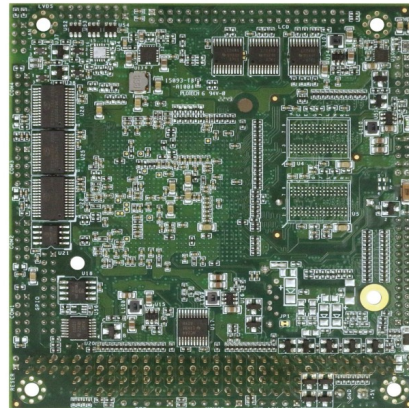
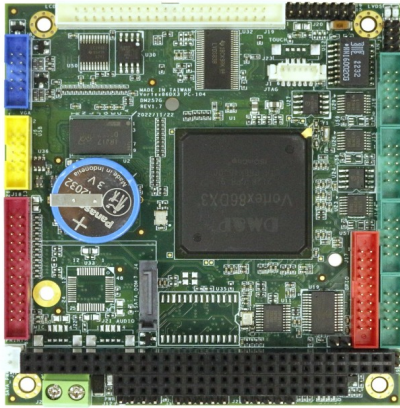


VDX3-6754S-V2



Specifications

CPU	DM&P SoC Vortex86DX3 600MHz, L1: 32K I-Cache, 32K D-Cache, L2 Cache: 512KB			
RAM	256MB DDR3 Onboard			
BIOS	AMI BIOS			
Bus	PC/104 Standard Compliant			
Display	Integrated 2D VGA chip with Dual Display Support (VGA + TTL / VGA + LVDS) VGA: Maximum resolution up to 1920 x 1080 @ 60Hz LVDS: Maximum resolution up to 1024 x 768 @ 60Hz, single channel 24-bit LVDS			
LAN	Integrated 10/100Mbps Ethernet x1			
Audio	ALC888S(Optional)			
Disk Support	SATA DOM			
I/O Interface	RS232/485 x4 16-bit GPIO x1	USB (ver. 2.0) x2 DOS hot SWAP x1 (Optional)	Parallel x1 PS/2 touch controller x1 (Optional)	
Connectors	2.54mm 4-pin pin header for DC output x1 2.54mm 4-pin pin header for Keyboard x1 2.0mm 44-pin box header for LCD x1 2.0mm 20-pin pin header for LVDS x1 2.0mm 8-pin pin header for Ethernet x1 7-pin SATA connector for SATA DOM x1	2.54mm 2-pin pin header for Reset x1 2.54mm 4-pin pin header for Mouse x1 2.0mm 26-pin box header for Parallel x1 2.0mm 10-pin box header for USB x2 2-pin box header for DC 5V output x1 7-pin SATA connector for SATA DOM x1	2.54mm 104-pin PC/104 connector x1 2.0mm 20-pin box header for 16-bit GPIO x1 2.0mm 10-pin box header for RS232 x4 15-pin D-Sub female connector for VGA x1	
Power Requirement	DC+5V @ 680mA (Typical)			
Operating Temperature	-20°C - +70°C		-40°C - +85°C (Optional)	
Dimension	90 x 96mm			
Weight	80g			
O/S Support	Windows XP Professional Linux POS Ready (WePOS)	Windows Embedded 2009 DOS QNX	Windows Embedded Compact 7 VxWorks	Windows Embedded CE6.0 Free BSD

Ordering Information

PART NO.	CPU	DRAM (DDR3)	Storage	Display	LAN	USB (ver. 2.0)	RS232	16-bit GPIO	Parallel	Audio	Bus	Touch
VDX3-6754S-V2	600 MHz	256MB	SATA	VGA, LVDS, LCD	1	2	4	1	1	Not Supported	PC/104	Not Supported
CABLE-SET-6754-S	Cable set for VDX3-6754S-V2											