

## NPD1744

# 17" IP65 Sunlight Readable Marine Display

NAVPixel NPD1744, the high-performance, rugged touch monitor, is specially engineered to survive from the most demanding working environment. Housed in a milled billet aluminum case, the slim-profile NAVPixel NPD1744 is light weight and watertight. The front-mounted sunlight readable touch screen makes the industrial rugged monitor vividly and user-friendly. In addition, the high power efficiency and low heat design guarantee the stability and longevity required for mission critical deployment.

### Features:

- 1000 nits Sunlight Readable LCD
- Long Life, Low Power Consumption LED Backlight
- Wide Operating Temperature
- Picture In Picture Function
- Advanced Optical Bonding (AOT)
- High Shock & Vibration Resistance
- Resistive Touch Support
- IP65 Facial Waterproof
- 9-36V DC Input

### Application:

- Marine



## Specifications

V1

<b>Model Number</b>	<b>NPD1744</b>
<b>LCD Display</b>	
<b>Backlight</b>	17" LED Backlight
<b>Active Display Area</b>	337.92 x 270.33m
<b>Brightness</b>	1000 cd/m <sup>2</sup>
<b>Resolution</b>	1280x1024(SXGA)
<b>Contrast Ratio</b>	800:1
<b>Pixel Pitch (mm)</b>	0.264(H) x 0.264 (V)
<b>Viewing Angle</b>	160 (H), 160(V)
<b>Display Color</b>	16.7M
<b>Response Time</b>	5ms
<b>Inputs</b>	VGaX2, DVlX2, Compositex3, RS232x1, USBx1
<b>PIP Support</b>	3 Stages (child, split & wide screen)
<b>Mechanical</b>	
<b>IP Rating</b>	Fascial waterproof to IP65 standards when console mounted.
<b>Construction</b>	Rugged Aluminum Alloy Chassis
<b>Mounting</b>	Panel (Flush) mount, VESA mount
<b>Dimension (mm)</b>	384(W)x348.1(H)x57.8(D)
<b>Net Weight</b>	4.5kg
<b>Power</b>	
<b>Voltage</b>	DC Input Voltage: DC 9~36V
<b>Power Consumption</b>	50W
<b>Environmental</b>	
<b>Operating Temperature</b>	-10°C~50°C
<b>Non-Operating Temperature</b>	-20°C~70°C
<b>Certification</b>	Designed to meet CE / FCC Class A
<b>Marine Type Approval</b>	Marine BV certification, comply with IACS-E10 & IEC 60945

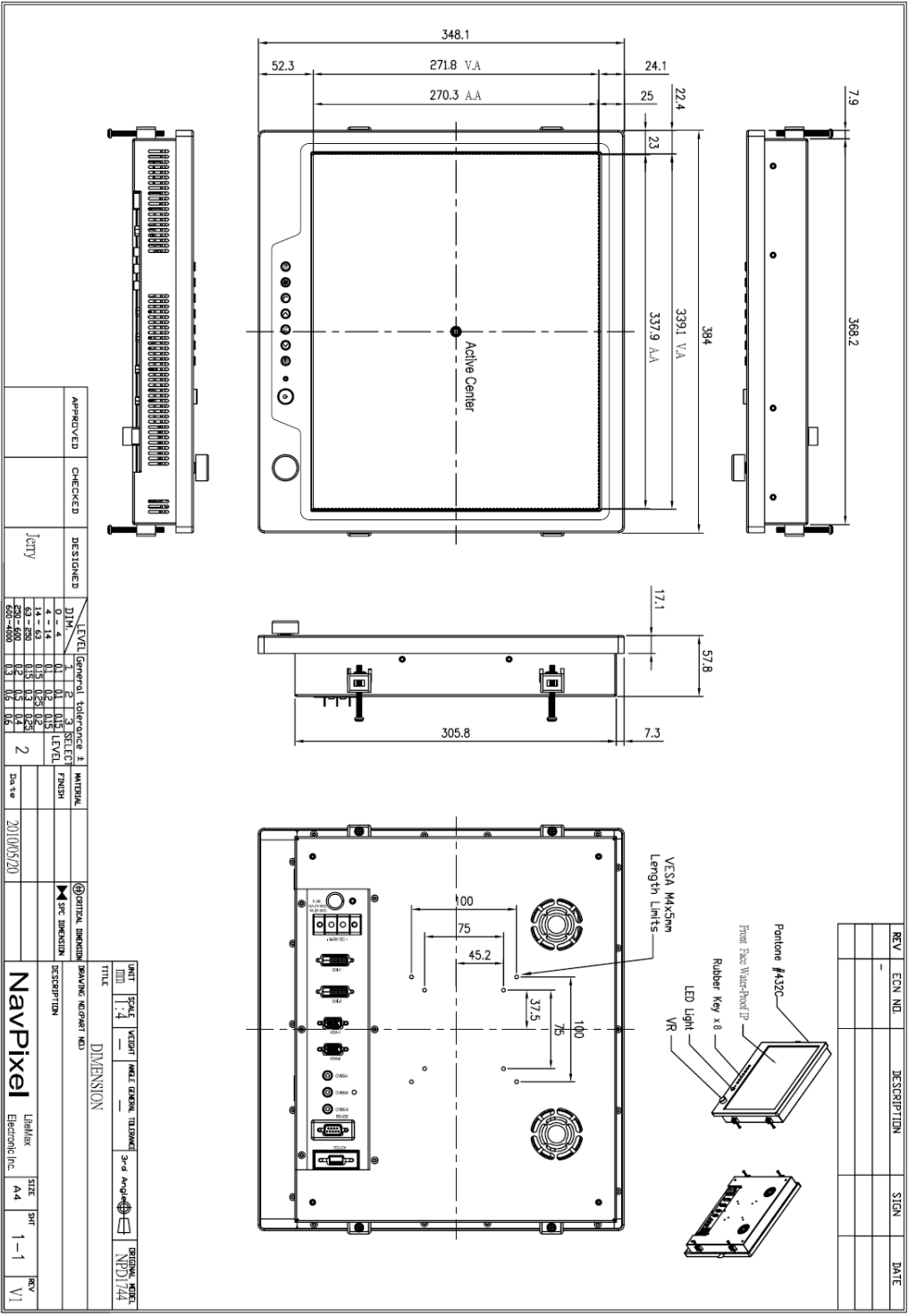
Specifications are subject to change without notice.

All brands or product names are trademarks or registered trademarks of their respective companies.

# Mechanical Drawing

## Outline Dimensions

Unit:mm



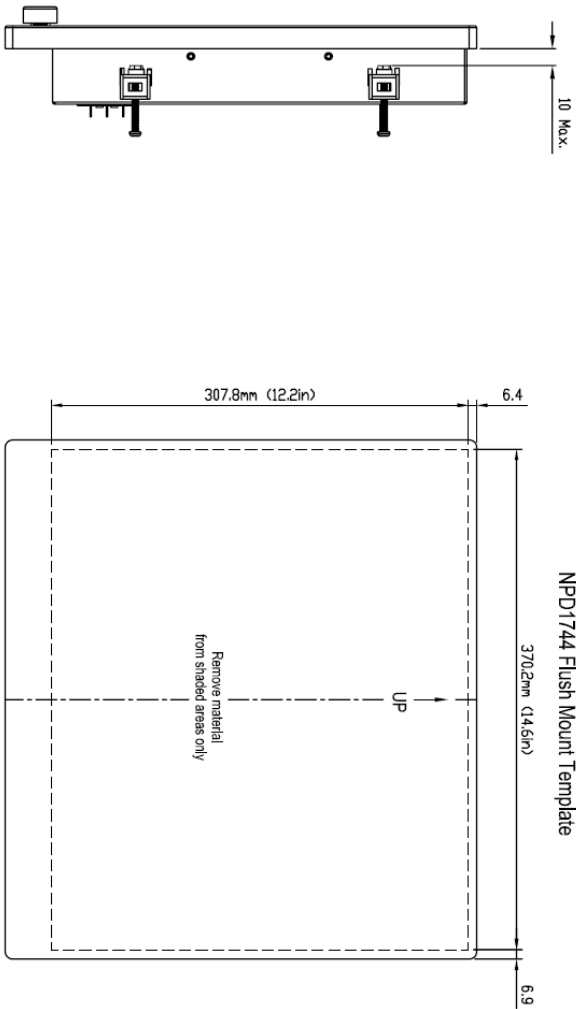
REV	ECON NO	DESCRIPTION	SIGN	DATE
-				

APPROVED	CHECKED	DESIGNED	LEVEL		Tolerance ±		MATERIAL	
		Jctty	DIM	1	2	3	SELECT	FINISH
			4-14	0.1	0.2	0.3	LEVEL	
			14-63	0.15	0.25	0.3		
			63-250	0.2	0.3	0.4		
			250-600	0.3	0.4	0.5		
			600-1000	0.3	0.5	0.6		
				2				
			Date	2010/05/20				

TITLE	UNIT	SCALE	VEIGHT	WEIGHT	WEIGHT	WEIGHT	WEIGHT	WEIGHT
DIMENSION	mm	1:4						
DESCRIPTION	DRAWING NUMBER NO							
NavPixel	Labeler							
Electronic Inc.	SITE							
	A4							
	SHEET							
	1-1							
	REV							
	V1							

REV	ECN NO.	DESCRIPTION	SIGN	DATE
△	-	Design drawing		2010/01/18

NPD1744 Flush Mount Template



Side View

Back View

APPROVED	CHECKED	DESIGNED	DATE
		Jerry	2010/05/20

LEVEL	General	tolerance	±	LEVEL	SELECT	LEVEL	MATERIAL	FINISH	CIRCUIT DIMENSION	SPEC DIMENSION
DIM	1	2	3	4	5	6				
0 - 4	0.1	0.2	0.15	0.15	0.2	0.25				
1.4 - 6.3	0.15	0.3	0.3	0.3	0.4	0.5				
6.3 - 25.0	0.2	0.3	0.3	0.3	0.4	0.5				
25.0 - 50.0	0.2	0.3	0.3	0.3	0.4	0.5				
50 - 400	0.3	0.5	0.5	0.5	0.6	0.8				

UNIT	SCALE	WEIGHT	WALL	GENERAL	TOLERANCE	3rd Angle	ORIENT	ORIENT
MM	1:4	—	—	—	—	—	—	NPD1744

TITLE	DESCRIPTION	SIZE	SHEET	REV
Chout Dimension	BRAVING KIDPART NO.1	A4	2-2	V1

<b>NavPixel</b>	Libellex Electronic Inc.	A4	2-2	V1
-----------------	--------------------------	----	-----	----

## Ordering Information

Part Number	Description
NPD1744-EGAW-H01	17", 1000nits, SXGA, AR glass. LID17B01, AD8668, WP, AOT, V01
NPD1744-EGAW-H011	17", 1000nits, SXGA, AR glass. LID17B01, AD8668, WP, AOT. with adaptor, V01
NPD1744-ETAW-H01	17" , 1000nits, SXGA, Touch-usb. Transparency:80, LID17B01. AD8668, WP, AOT, V01
NPD1744-ETAW-H011	17", 1000nits, SXGA, Touch-usb. (Transparency:80%), LID17B01. AD8668, WP, AOT, with adaptor. V01

## Optional Accessories

Part Number	Description
980000300010	SET, OTHER, CD for User. Menu & Touch driver (NPD series)
810650005110	CABLE, POWER, DC, 5000mm, TER. MINAL TO OPEN, 14AWG*2C+BRA. ID, COOL GRAY 7C PVC JACKET, P
810130001000	CABLE. VGA. 3000mm. D-SUB15P MALE. BLUE TO D-SUB 15P MALE BLUE. BLACK. P
321189155501	Print, Menu, User, NPD. 1555, V0, series, P
321179174401	Print, Menu, Install, NPD, 1744, V0. Flush mount template, P
112615315401 x (4)	Metal, SPCC, NPS, 1531, Lock, V0, P
214032121101 x (4)	Screw, M4, 32mm, Round, Ni, P
460100002101 x (4)	Fixture, other, MP-4, V0, P
980000560010 (Optional)	SET, OTHER, ADAPTER REWORK. 60W KPA-060F WITH Y TYPE. TERMINAL, P
810618301010 (Optional)	CABLE. POWER. AC. 1830mm USA type
810618301090 (Optional)	CABLE. POWER. AC, 1830mm Europe type
810618301050 (Optional)	CABLE. POWER. AC. 1830mm UK type
810618301170 (Optional)	CABLE. POWER. AC, 1830mm Australia type
810618301030 (Optional)	CABLE. POWER. AC. 1830mm Japan type