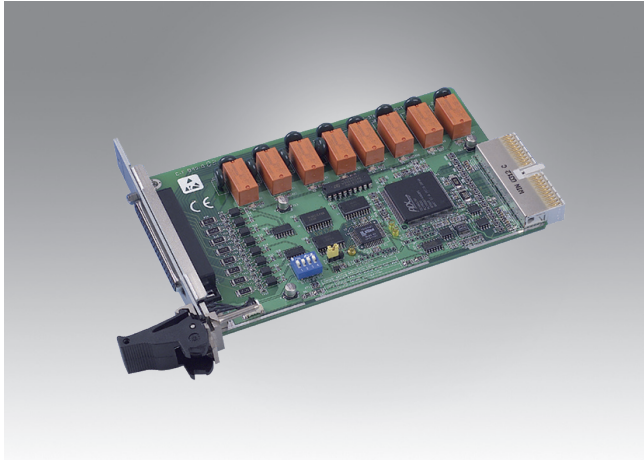


MIC-3761

MIC-3780

8-CH Relay & 8-CH Isolated Digital Input 3U CompactPCI® Card

8-CH, 16-bit Counter/Timer 3U CompactPCI® Card



MIC-3761/3



Specifications

Isolated Digital Input

- Channels 8
- Input Voltage Logic 0: 3 V max.
Logic 1: 10 V min.
(50 V max.)
- Input Current* 10 V_{DC} 1.6 mA (typical)
12 V_{DC} 1.9 mA (typical)
24 V_{DC} 4.1 mA (typical)
48 V_{DC} 8.5 mA (typical)
50 V_{DC} 8.9 mA (typical)
- Interrupt Capable Ch. ID0 ~ ID7
- Isolation Protection 2,500 V_{DC}
- Overvoltage Protection 70 V_{DC}
- Opto-Isolator Response 25 µs
- Input Resistance 560 Ω

Relay Output

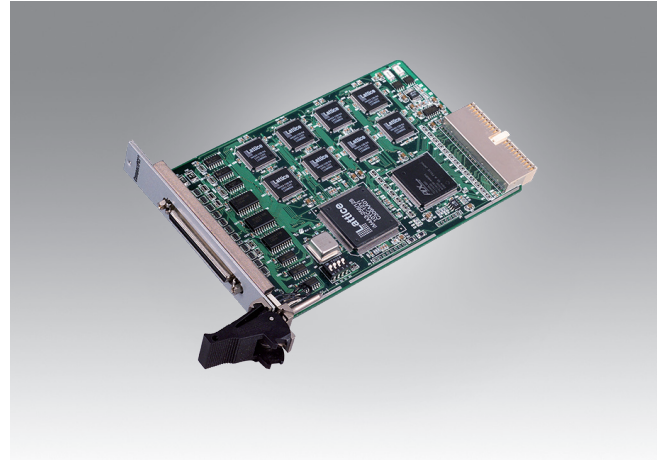
- Channels 8
- Relay Type SPDT
(4 Form A, and 4 Form C)
- Contact Rating 3 A @ 250 V_{AC} or
3 A @ 24 V_{DC}
- Relay on Time 15 ms max.
- Relay off Time 5 ms max.
- Life Span Mechanical
2 x 10⁷ ops. min.
Electrical
2 x 10⁹ ops. min. (contact rating)
- Resistance 1 GΩ min. (at 500 V_{DC})

General

- PICMG Compliance CompactPCI V2.0, R 3.0
Hot-Swap V2.1, R 2.0, R 2.1
- Bus Type CompactPCI
- I/O Connectors 1 x 37-pin D-type female connector
- Dimensions (L x H) 160 x 100 mm (6.9" x 3.9") with 3U Bracket
- Power Consumption Typical: +5 V @ 220 mA
Max.: +5 V @ 750 mA
- Certification CE

Ordering Information

- MIC-3761/3-AE 3U 8-ch Relay Actuator and 8-ch Isolated D/I Card
- PCL-10137-1E/2E/3E DB-37 cable assembly, 1, 2 and 3 m
- ADAM-3937-BE DB-37 Wiring Terminal for DIN-rail Mounting
- PCLD-780-BE Universal Screw Terminal Board



MIC-3780/3



Specifications

Digital Input

- Channels 8
- Compatibility 5 V/TTL
- Input Voltage Logic 0: 0.8 V max.
Logic 1: 2.4 V min.
- Interrupt Capable Ch. 1 (channel 0)

Digital Output

- Channels 8
- Compatibility 5 V/TTL
- Output Voltage Logic 0: 0.5 V max. @ 24 mA
Logic 1: 2.4 V min. @ -15 mA
Sink: 0.5 V max. @ 24 mA
Source: 2.4 V min. @ -15 mA
- Output Capability

Counter/Timer

- Channels 8 (independent)
- Resolution 16 bits
- Compatibility 5 V/TTL
- Max. Input Frequency 20 MHz
- Reference Clock Internal: 20 MHz
- Counter Modes 12 (programmable)
- Interrupt Capable Ch. 8

General

- PICMG Compliance CompactPCI V2.0, R 3.0
Hot-Swap V2.1, R 2.0
- Bus Type CompactPCI V2.1
- I/O Connectors 68-pin SCSI-II female
- Dimensions (L x H) 160 x 100 mm (6.3" x 3.9") with 3U Bracket
- Power Consumption Typical: +5 V @ 900 mA
Max: +3.3 V @ 1.2 A
- Operating Temperature 0 ~ 60 °C (32 ~ 140 °F) (refer to IEC 68-2-1, 2)
- Storage Temperature -20 ~ 70 °C (-4 ~ 158 °F)
- Relative Humidity 5 ~ 95 % RH non-condensing (refer to IEC 68-2-3)
- Certification CE, FCC Class A

Ordering Information

- MIC-3780/3-A1E 3U Compact PCI 8-ch, 16 bit counter/timer card
- PCL-10168-1E/2E 68-pin SCSI-II cable with male connectors on both ends and special shielding for noise reduction, 1 and 2 m
- ADAM-3968-AE 68-pin SCSI-II Wiring Terminal Board for DIN-rail mounting