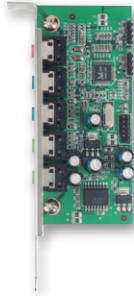


Extension Modules for Slot SBCs



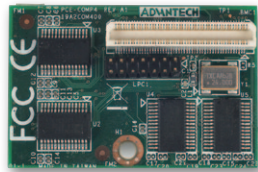
PCA-AUDIO-00A1E

- 5.1 Channel AC'97 Audio Extension Module
- Line-in, Mic-in, Aux-in, Line-out, Speaker-out, CD-in and Buzzer-in from CPU card
- Dimensions: 47.5 x 80.74 mm



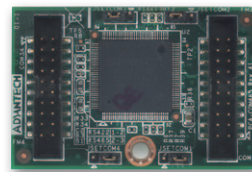
PCA-AUDIO-HDA1E

- 7.1 Channel HD Audio Extension Module
- Line-in, Mic-in, Lin-out, Front-out, Speaker-out, Rear-out, Subcen-out, Side-out
- Dimensions: 47.5 x 80.74 mm



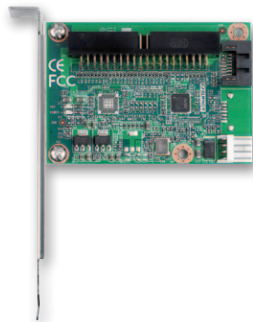
PCA-COM232-00A1E

- 4 RS-232 series ports extension module by LPC connector on CPU card.
- Dimensions: 31.5 x 48 mm



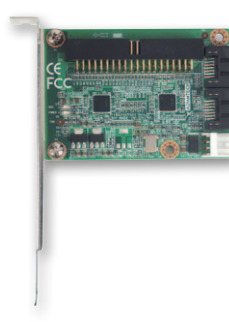
PCA-COM485-00A1E

- 4 RS-422/485 series ports extension module by LPC connector on CPU card.
- With Auto-flow control function
- Dimensions: 31.5 x 48 mm



PCA-SATAP1-00A1E

- 1 IDE to 1 SATA adapter board with bracket
- 1 EIDE (ATA100/66/33)
- 1 port SATA (300MB/s)
- Dimensions: 47.5 x 80.74 mm



PCA-SATAP2-00A1E

- 1 IDE to 2 SATAs adapter board with bracket
- 1 EIDE (ATA100/66/33)
- 2 ports SATA (300MB/s)
- Dimensions: 47.5 x 80.74 mm



PCA-CFP1-00A1E

- IDE to CF adapter board with bracket
- 1 EIDE (ATA100/66/33)
- 1 CF socket
- Dimensions: 64.3 x 67.3 mm



PCA-5650-00A1E

- 2 VGA output Mini PCI Express Graphic card
- GPU: Silicon Motion SM750
- VGA output: 1920 x 1080, up to 75Hz vertical rate
- 16 Mb of embedded DDR memory

Industrial Server	1
Embedded IPC	2
Pre-configured System	3
Industrial Computer Chassis	4
Slot SBC & Passive Backplanes	5
Industrial Motherboards	6
Industrial Computer Peripherals	7