

# MODAT-530

## Ruggedized Android PDA

**New**



### Features

- Stylish rugged design and ultra-light industrial Android mobile device
- Quad-core Cortex™-A7 1.2GHz processor
- 5.3" display PDA
- GSM 850/900/1800/1900
- Optional WCDMA 850/2100 (HSPA+, HSDPA 42Mbps, HSUPA 11.5Mbps)
- Micro USB port and microSD card slot (max. 32 GB) for maximum connectivity
- Android 4.2.2 OS
- NFC (device to device communication, card reader)



### Specifications

Model	MODAT-530	
Display	LCD Size	5.3"
	Brightness (cd/m <sup>2</sup> )	350 cd/m <sup>2</sup>
	Max. Resolution	480(H) x 854(V)
	Viewing Angle	70/70/70 Deg.
	Touchscreen	5-point capacitive
System	CPU	Quad-core Cortex™-A7 1.2GHz
	Operating System	Android 4.2.2
	Memory	4GB eMMC 1GB LPDDR2
	Storage	microSD slot supports up to 32GB (SDHC supported)
Communication	Wi-Fi	802.11b/g/n
	Bluetooth	4.0 LE
	Modem	GSM 850/900/1800/1900 WCDMA 850/2100 (HSPA+, HSDPA 42Mbps, HSUPA 11.5Mbps) (optional)
	GPS	GPS
Data Collection	NFC	Yes
	Camera	8-megapixel AF rear camera
Indicators & Buttons	LED Indicators	Green/Red
Sensors	Magnetometer	Optional
	Gravity Sensor	Yes
	Gyro sensor	Optional
I/O Interface	Audio	1 x 0.5W speaker 1 x Headset/Microphone
	USB	1 x High-speed Micro USB 2.0 host
Power	Power Adapter	5V/2.6 A
	Battery	2700 mAh
Environments	Operating Temperature	-10°C ~ 50°C
	Storage Temperature	-20°C ~ 60°C
	Humidity	5% ~ 95%, non condensing
	Drop Survival	1.5M
	Environmental Protection	IP 67
	Certification	CE/FCC
Physical	Dimensions (L x W x H)	161.5 mm x 86 mm x 17.45 mm
	Weight	287 g

1

IEIMobile Solutions

2

Automation Panel Solutions

3

PACSmate Medical Solutions

4

Optional Peripherals



### Packing List

Item	Part No.	Q'ty
USB Cable	32001-014300-100-RS	1
Wall charger/AC adaptor (world plugs included)	63040-290013-000-RS	1
Hand Strap	46035-000300-RS	1

### Ordering Information

Part No.	Description
MODAT-530A-QA7-R10	5.3" 350 cd/m <sup>2</sup> , Android phone/PDA with quad-core Cortex™-A7 1.2 GHz CPU, GPRS/EDGE, 802.11b/g/n Wi-Fi, 4.0 LE Bluetooth, 3G 2100/850(optional), GPS (GNSS, AGPS), FM (RX), Capacitive touchscreen, 8-megapixel camera, 1GB DDR2, 4G eMMC, Android 4.2.x, NFC, RoHS.

## Mobility Anywhere from Warehouse to Office

- All data and information captured by the MODAT-530 can be transferred via the wireless communication technologies to provide real-time response without any loss, therefore enhancing on-duty staff work force and mobility.
- Combining the QNAP NAS data collection device and MODAT-530 provides easy access to your NAS data anywhere from the warehouse/docking area, retail space and back office.



**Smart NAS Distributed Station**

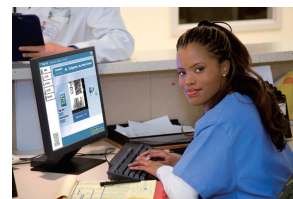
- Data Collection
- UI Report
- Software Update
- Back Up and Exchange



Warehouse



Retail Space



Office / Server room

1

IEIMobile Solutions

2

Automation Panel Solutions

3

PACSMate Medical Solutions

4

Optional Peripherals