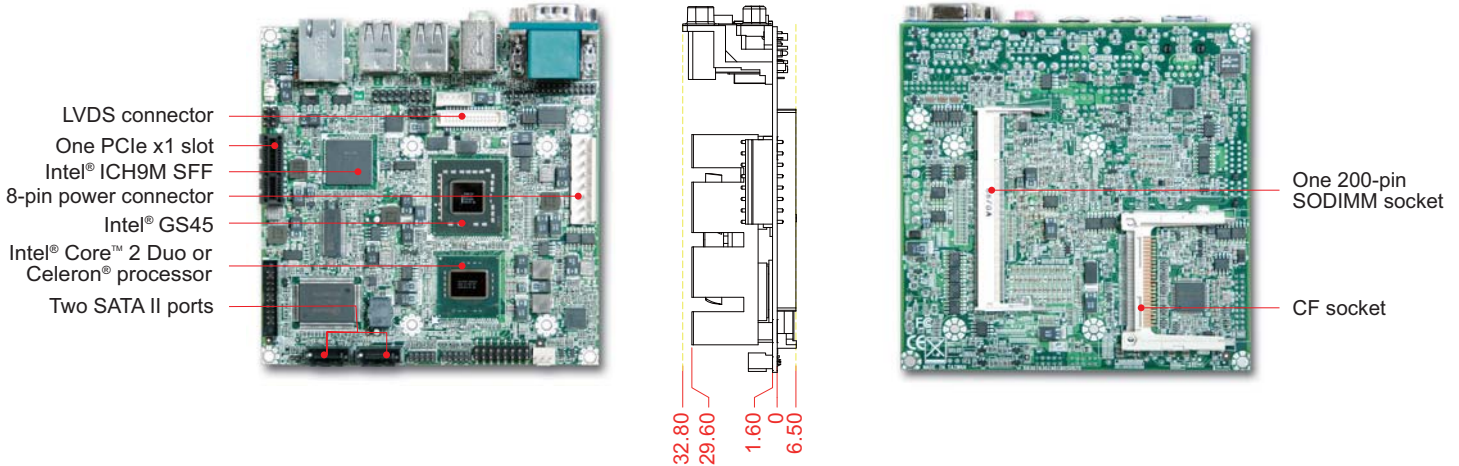


NANO-8050

Leading Intel® latest ULV Mobile SFF 45nm Core™ 2 Duo or Celeron® M Processor based NANO-ITX with DDR2 SODIMM, Dual Displays, Gigabit Ethernet, Audio, USB

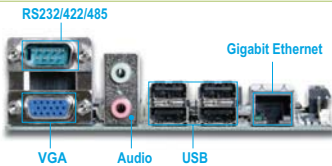


NANO-8050 adopts Intel® Small Form Factor (SFF) mobile chipset and takes advantage of leading Intel® Core™ 2 Duo/Celeron® M technologies with high performance, built-in graphics media accelerator (GMA) 4500MHD graphics engine. NANO-8050 supports 3D performance and dual display by VGA and LVDS. This compact, low heat model is ideal for Medical and DS applications.

FEATURES

- Intel® Ultra Low Voltage Mobile 45nm Core™ 2 Duo or Celeron® M Processor
- One 200-pin SODIMM supports DDR2 800/667MHz up to 2GB
- Dual Display: VGA and 24-bit LVDS
- One Intel® Gigabit Ethernet port
- Supports iTPM function for more secure platforms

REAR/IO



ORDERING GUIDE

AB1-3266	NANO-8050-1200.Nano-ITX ESB.Intel Core 2 Duo SU9300 1.2GHz.w/DDR2 SDRAM/VGA/LVDS/Dual Display/GbE LAN/Audio
AB1-3280	NANO-8050-2260.Nano-ITX ESB.Intel Core 2 Duo SP9300 2.26GHz.w/DDR2 SDRAM/VGA/LVDS/Dual Display/GbE LAN/Audio
AB1-3281	NANO-8050-1860.Nano-ITX ESB.Intel Core 2 Duo SL9400 1.86GHz.w/DDR2 SDRAM/VGA/LVDS/Dual Display/GbE LAN/Audio
AB1-3355	NANO-8050-C1203.Nano-ITX ESB.Intel Celeron ULV723 1.2GHz.w/DDR2 SDRAM/VGA/LVDS/Dual Display/GbE LAN/Audio
AB1-3373	NANO-8050-C1202.Nano-ITX ESB.Intel Celeron ULV722 1.2GHz.w/DDR2 SDRAM/VGA/LVDS/Dual Display/GbE LAN/Audio
AA1-3078	PER-4110R.1 Slot Riser Card.PCIEx1 to PCIEx1

PACKING LIST

One NANO-8050 NANO-ITX Main Board
One Active or Passive Heatsink depends on CPU sku
One Installation CD
One 8 pin ATX Power Cable

GENERAL

Processor	- Intel® Core™ 2 Duo, and Celeron® mobile processors up to 2.26GHz - FSB: 800MHz - Supports Intel® Virtualization Technology (VT-x), Intel® Trusted Execution Technology, Enhanced Intel SpeedStep® Technology (SP9300)
Chipset	- Intel® 82GS45 Graphics and Memory Controller Hub (12W) - Intel® ICH9M SFF I/O Controller Hub (2.5W)
BIOS	AMI Core 8 BIOS
Memory	Supports up to 2GB DDR2 667/800 MHz SDRAM on one 200-pin SODIMM socket
Storage Devices	- 1x Type II CompactFlash socket supports Ultra DMA133/100/66/33 MB/s by JMD330 SATA to PATA Bridge - 2x SATA II support 3.0Gb/s data transfer rate
Watchdog Timer	Programmable via S/W from 1 sec. to 255 sec.
Hardware Monitoring	- Temperature (CPU & System) - Voltage (CPU Vcore, VBAT, 5VSB, 12V, 5V, 3.3V)
Expansion Interface	1x PCI Expressx1 Gen 1 (2.5 GT/s)

I/O INTERFACE

Super I/O	Winbond W83627THG
Audio	- Intel® ICH9M built-in High Definition Audio up to 192-kHz 32-bit - Realtek ALC262-VC2-GR HDA codec, 2.1 channels - Audio Jack on rear I/O with Line-out and Mic-in
Ethernet	- Intel® WG82567LM Gigabit Ethernet Phy - 1x RJ45 connector on rear I/O
Serial Port	1x RS232/422/485 port with DB-9 connector on rear I/O
USB	- 4x USB 2.0 ports on rear I/O - 2x USB 2.0 ports on board with pitch 2.0 header - 480 Mb/s bus comprehends the high-speed/full-speed/low-speed data ranges
GPIO	On board programmable 8-bit Digital I/Os

DISPLAY

Graphic Controller	Intel® GMCH integrated Intel® GMA 4500MHD supports DVMT 5.0, Microsoft DX 10, hardware acceleration of MPEG2
Display Interface	- LVDS: Dual channel 24-bit LVDS - CRT: One DB-15 connector on rear I/O resolution up to 2048x1536 (QXGA)

Mechanical & Environment

Dimension	120(L) x 120(W)mm; 4.72"(L) x 4.72"(W)
Power Supply	+5V, +12V input
Environment	- Operation Temperature: 0°C to 55°C - Storage Temperature: -20°C to 85°C - Relative Humidity: 5% to 95%, non-condensing
MTBF	105,924 hours at 40°C

