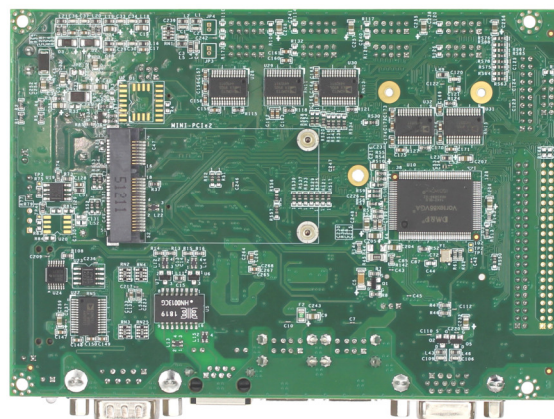
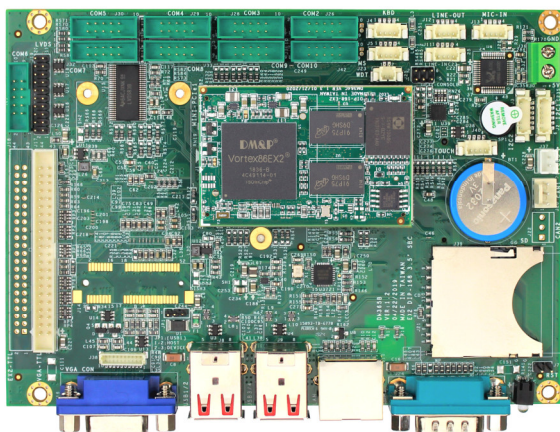


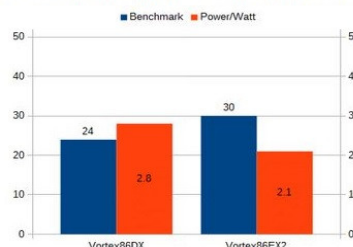
# VEX2-6427



## Specifications

CPU	DM&P Vortex86EX2 Processor 600MHz		
RAM	512MB/1GB DDR3 Onboard		
BIOS	Coreboot BIOS		
Expansion	MiniPCIe x2 (Option)		
Display	Integrated 2D VGA chip with VGA and TFT Flat Panel Interface Support VGA: resolution up to 1024 x 768 @ 60Hz LCD: resolution up to 1024 x 768 @ 60Hz LVDS: resolution up to 1024 x 768 @ 60Hz, single channel 24-bit		
LAN	Integrated 10/100Mbps Ethernet		
Audio	Realtek ALC262	Buzzer	
Disk Support	SD Card	Micro SD Card/eMMC (Option)	
I/O Interface	COM x10 (2x RS232/485) CAN bus x2 (Option) 12-bit ADC x 8 (Option)	USB x4 Touch function x1 (Option)	I <sup>2</sup> C x2 PS/2 x 2
Connectors	1.25mm 4-pin wafer for I <sup>2</sup> C x2 1.25mm 4-pin wafer for Touch function x1 (Option) 1.25mm 4-pin wafer for Line-in, Line-out, MIC-in x3 15-pin D-sub female connector for VGA x1 SD Card slot x1	1.25mm 4-pin wafer for Keyboard x1 2.0mm 10-pin box header for COM x9 (Option) 2.54mm 3-pin molex for CAN Bus x2 (Option) MiniPCIe slot x2 (Option) USB connector x4	1.25mm 4-pin wafer for Mouse x1 2.0mm 44-pin box header for LCD x1 2.0mm 20-pin header for LVDS x1 9-pin D-sub male connector for COM x1 RJ45 connector x1
Power Requirement	5VDC @ 670mA		
Operating Temperature	-20°C to +70°C -40°C to +85°C (Optional)		
Dimension	102 x 146mm		
Weight	130g		
O/S Support	Windows Embedded Compact 7 QNX	Windows Embedded CE6.0 FreeBSD	Linux DOS

### Benchmark & Power Consumption Index



**Perfect Replacement Solution for Vortex86 DX Platform**

1. CPU instruction upgrade
2. DRAM from DDR2 to DDR3
3. Manufacturing process from 90nm to 65nm

## Ordering Information

PART NO.	CPU Speed	DRAM (DDR3)	Disk Support	Display	LAN	USB (Ver. 2.0)	COM	I <sup>2</sup> C	CAN Bus	Audio	MiniPCIe
VEX2-6427-5C4NE	600MHz	1GB	SD Card, Micro SD Card	Frame Buffer LCD, LVDS			5		2		2
VEX2-6427-10C4VNE	600MHz	1GB		LCD, LVDS, VGA	1	4	10	2	1	Line-in Line-out MIC-in.	1
VEX2-6427-10C4VEE	600MHz	1GB	4GB eMMC SD Card	LCD, LVDS, VGA			10		1	Buzzer	1