



ATEN Altusen™

**KA9140 Serial CPU Module Quick Start Guide**

© Copyright 2015 ATEN International Co., Ltd. www.aten.com  
 Altusen and the Altusen logo are trademarks of ATEN International Co., Ltd.  
 All rights reserved. All other trademarks are the property of their respective owners.  
 This product is RoHS compliant PAPE-1214-D00G Printing Date: 01/2015



All information, documentation, firmware, software utilities, and specifications contained in this package are subject to change without prior notification by the manufacturer. Please visit our website <http://www.aten.com/download/?cid=dds> for the most up-to-date versions.

**Online Registration**  
 • <http://eservice.aten.com>

**Technical Phone Support**  
 International:  
 • 886-2-8692-6959  
 China:  
 • 86-10-5255-0110  
 Japan:  
 • 81-3-5615-5811  
 Korea:  
 • 82-2-467-6789  
 North America:  
 • 1-888-999-ATEN Ext: 4988  
 United Kingdom:  
 • 44-8-4481-58923



# 1 Package Contents

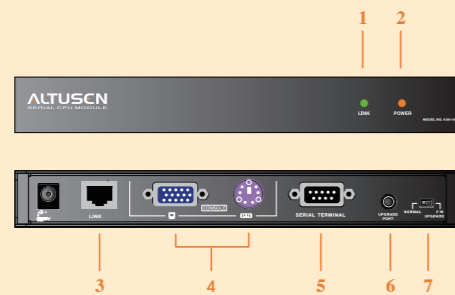
This Quick Start Guide briefly describes how to install and operate the KA9140 Serial CPU Module with ATEN's PS/2 or Matrix type KVM Switch.

The complete package consists of:

- 1 KA9140
- 1 Power Adapter
- 1 Rack Mount Kit
- 1 Firmware Upgrade Cable
- 4 Foot Pads
- 1 User Instructions

# 2 Hardware Overview

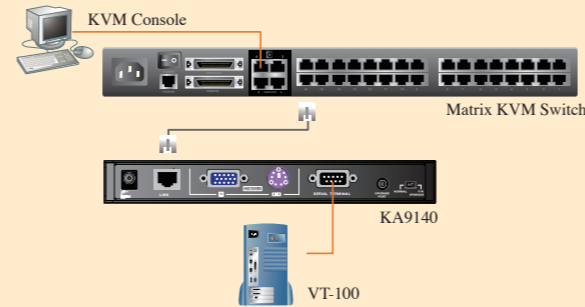
1. Link (Green) LED
2. Power (Orange) LED
3. Link Port
4. Console Port
5. Serial Terminal Port
6. Firmware Upgrade Port
7. Firmware Upgrade Switch



# 3 Hardware Installation

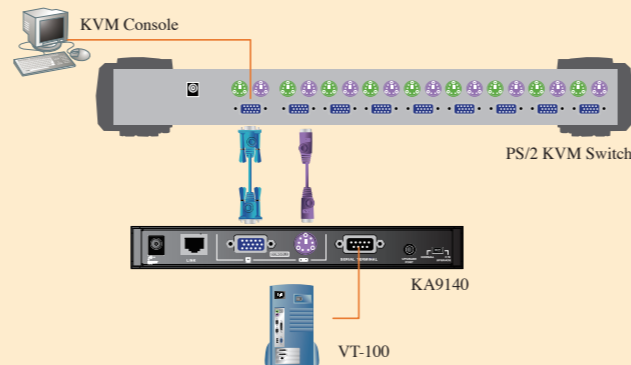
- You will need:
- At least one KVM Switch and one VT-100 compatible Terminal
  - 1 standard 9 pin RS-232 serial to serial interface cable
  - 1 RJ45 cable (max 150m) for Matrix type KVM
  - 1 standard PS/2 to PS/2 cable for PS/2 type KVM
  - 1 standard 15 pin VGA to VGA cable for PS/2 type KVM

## For RJ45 Matrix Type KVM:



1. If you have a Matrix type KVM, simply plug one end of a RJ45 cable into any available CPU port on your KVM switch and plug the other end into the RJ45 Link Port on your KA9140.
2. Plug one end of a standard 9 pin serial cable into the Terminal Port on your KA9140 and the other end into the serial port on your VT-100 terminal.
3. Plug the Power Adapter into a wall socket, then plug the cord end into the Power Jack on your KA9140.
4. Use Hotkeys to configure the port settings.

## For PS/2 Type KVM:



1. If you have a PS/2 type KVM, plug one end of a standard 15 pin VGA to VGA cable into any available CPU VGA port on your KVM then plug the other end into the VGA Console Port on your KA9140.
2. Plug one end of a standard PS/2 to PS/2 cable into a matching PS/2 Keyboard on your KVM then plug the other end into the Keyboard Console Port on your KA9140.
3. Plug one end of a standard 9 pin serial cable into the Terminal Port on your KA9140 and the other end into the serial port on your VT-100 terminal.
4. Plug the Power Adapter into a wall socket, then plug the cord end into the Power Jack on your KA9140.
5. Use Hotkeys to configure the port settings.

# 4 Configuration

Use keyboard hotkey combinations to configure your port settings. Press the [ALT] key twice to invoke Hotkey Mode. A prompt will appear on your screen with your current settings. Press any Hotkey below to change your settings. When done, press the [ESC] or spacebar to save and exit.

- |                          |                 |             |                            |
|--------------------------|-----------------|-------------|----------------------------|
| [A]: Config              | [I] 8 bit data* | [A] Black*  | [C]: Language              |
| [A] 9600 bps baud rate*  | [J] 7 bit data  | [B] Red     | [A] English*               |
| [B] 19200 bps baud rate  | [K] 2 stop bits | [C] Green   | [B] French (reserved)      |
| [C] 38400 bps baud rate  | [L] 1 stop bit* | [D] Yellow  | [C] German (reserved)      |
| [D] 57600 bps baud rate  |                 | [E] Blue    | [D]: Restore Default Value |
| [E] 115200 bps baud rate |                 | [F] Magenta |                            |
| [F] Parity None*         |                 | [G] Cyan    |                            |
| [G] Parity Even          |                 | [H] White   |                            |
| [H] Parity Odd           |                 |             |                            |

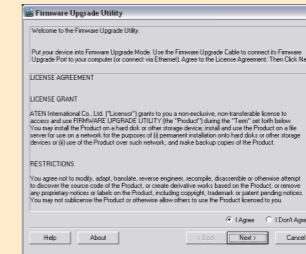
\* default

Note: the video resolution depends on the Terminal. The recommended resolutions are 800 x 600 @ 60 Hz for 80 characters per line and 1152 x 864 @ 75 Hz for 132 characters per line. Flow control (Xon/Xoff or Hardware) is also determined by your terminal.

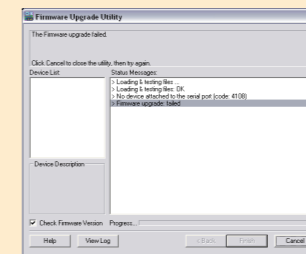
# 5 Firmware Upgrade Utility

The KA9140's firmware can be upgraded via a cable connection to a computer. Follow the steps listed below if you need to upgrade:

1. From any computer that is not part of your KVM installation, go online to the [www.aten.com](http://www.aten.com) website and download the latest Firmware Upgrade for your KA9140.
2. Power off and unplug the KA9140 from your KVM and connect it to your computer with the included Firmware Upgrade Cable. Plug one end into the Firmware Upgrade Port on your KA9140 and the other end to a serial port on your computer.
3. Slide the Firmware Upgrade Switch to the UPGRADE position.
4. Power On your KA9140.



License Agreement



Firmware Upgrade Utility

5. Run the self extracting firmware upgrade file. The instructions are self explanatory.
6. The main screen will display all the devices that are detected and can be upgraded.
7. If you check the Check Firmware Version box, The upgrade utility will check to see if the firmware version is newer than what is already embedded.
8. If the file is newer, follow the instructions on the screen. If not, you will be prompted with a warning message and instructed to continue or exit.
9. If you continue, the firmware will be reprogrammed and if successful, will prompt you with a Upgrade Successful message.
10. If you receive a Upgrade Failed message, you should check all the connections and repeat the upgrade procedure from the beginning.

# 6 Specifications

Function		KA9140	
Connectors	Computer Side	RS-232	1 x DB-9 Female
		Link	1 x RJ-45 Female
	Console Side	Keyboard	1 x Min Din Female
		VGA	1 x HDB-15 Female
		Upgrade	1 x Earphone-jack-4 Female
LEDs	Power	1 (Orange)	
	Link	1 (Green)	
Switch (Normal / Upgrade)		1 x 2 way slide switch	
Power Consumption		DC 5V 1.5W	
Environment	Operating Temp.	0°-50°C	
	Storage Temp.	-20°-60°C	
	Humidity	0-80% RH, Non-condensing	
Physical Properties	Housing	Metal	
	Weight	0.50 kg	
	Dimensions (L x W x H)	200.0 x 80.0 x 35.0 cm	

\* All specifications are subject to change without notice.