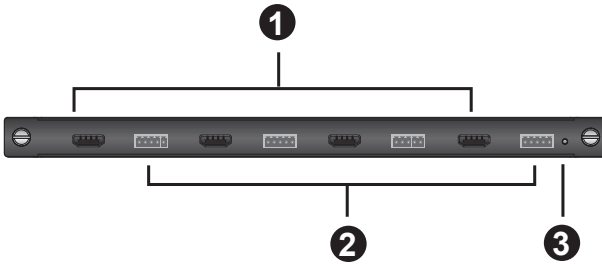


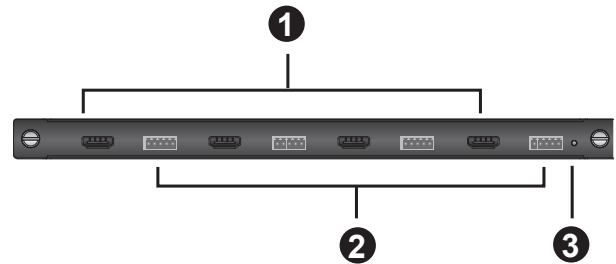
# VM7804 / VM8804

## 4-Port HDMI Input/Output Board Quick Start Guide

VM7804 Front View



VM8804 Front View



## Hardware Review

### VM7804 Front View

1. HDMI Input Ports
2. Audio Input Ports
3. Status LED

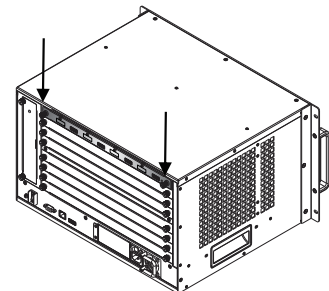
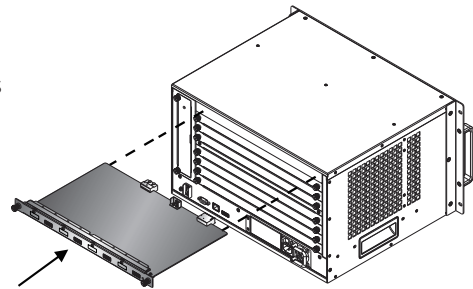
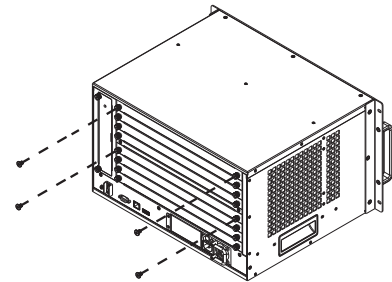
### VM8804 Front View

1. HDMI Output Ports
2. Audio Output Ports
3. Status LED

## Hardware Setup

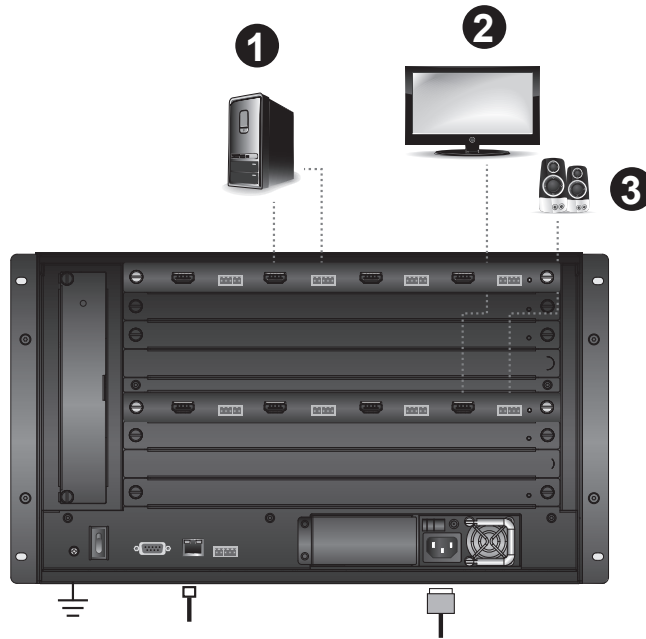
### I/O Board Installation

1. (Optional) Power off the Modular Matrix switch.  
**Note:** The Input/Output Boards are hot swappable.
2. On the rear of the VM1600 unscrew the two phillips head screws and remove a back panel cover.
3. Slide the I/O board into the open slot on the VM1600 until it secures in place.  
**Note:** The upper four slots are for input boards; the lower four slots are for output boards.
4. Tighten the screws on the I/O board to fasten it to the Modular Matrix switch, until its secure.
5. Repeat the steps if you are installing more I/O boards.
6. Power on the Modular Matrix switch.



## Installation

1. Connect your A/V input source device to the HDMI / audio input port of the VM7804.
2. Connect your video display device to the HDMI output port of the VM8804.
3. Connect your speakers / audio output device to the Audio output port of the VM8804.
4. Power on the VM1600 and all devices in the installation.



**Online Registration**  
<http://eservice.aten.com>

**Technical Phone Support**  
**International:**  
 886-2-86926959

**North America:**  
 1-888-999-ATEN  
 Ext: 4988

**United Kingdom:**  
 44-8-4481-58923



This device complies with Part 15 of the FCC Rules. Operation is subject to the following two conditions: (1) this device may not cause harmful interference, and (2) this device must accept any interference received, including interference that may cause undesired operation.

### Important Notice

Considering environmental protection, ATEN does not provide a fully printed user manual for this product. If the information contained in the Quick Start Guide is not enough for you to configure and operate your product, please visit our website [www.aten.com](http://www.aten.com), and download the full user manual.

The following contains information that relates to China:

部件名称	有毒有害物质或元素					20
	铅	汞	镉	六价铬	多溴联苯 多溴二苯醚	
电器部件	●	○	○	○	○	○
结构部件	○	○	○	○	○	○

- : 表示该有毒有害物质在该部件所有均质材料中的含量均在SJ/T 11363-2006规定的限量要求之下。
- : 表示符合欧盟的指令要求, 但含有有害物质至少在该部件的某一均质材料中的含量超出SJ/T 11363-2006的限量要求。
- ×: 表示该有毒有害物质至少在该部件的某一均质材料中的含量超出SJ/T 11363-2006的限量要求。

All information, documentation, firmware, software utilities, and specifications contained in this package are subject to change without prior notification by the manufacturer. Please visit our website <http://www.aten.com/download/?cid=dds> for the most up-to-date versions.

© Copyright 2014 ATEN® International Co., Ltd.  
 ATEN and the ATEN logo are trademarks of ATEN International Co., Ltd. All rights reserved. All other trademarks are the property of their respective owners.

This product is RoHS compliant.