



ATEN Altusen™

CC2000 Control Center Over the NET Quick Start Guide

© Copyright 2015 ATEN® International Co., Ltd. www.aten.com
Altusen and the Altusen logo are trademarks of ATEN International Co., Ltd. All rights reserved. All other trademarks are the property of their respective owners.

This product is RoHS compliant PAPE-1214-P50G Printing Date: 10/2015



All information, documentation, firmware, software utilities, and specifications contained in this package are subject to change without prior notification by the manufacturer. Please visit our website <http://www.aten.com/download/?cid=dds> for the most up-to-date versions.

Online Registration
• <http://eservice.aten.com>

Technical Phone Support International:
• 886-2-8692-6959
China:
• 86-10-5255-0110
Japan:
• 81-3-5615-5811
Korea:
• 82-2-467-6789
North America:
• 1-888-999-ATEN Ext: 4988
United Kingdom:
• 44-8-4481-58923



The following contains information that relates to China:

部件名称	有毒有害物质或元素					
	铅	汞	镉	六价铬	多溴联苯	多溴二苯醚
电器部件	○	○	○	○	○	○
机构部件	○	○	○	○	○	○

○: 表示该有害物质在该部件所有均质材料中的含量均在SJ/T 11363-2006规定的限量要求之下。
●: 表示符合欧盟的豁免条款, 但有害物质在该部件的某一均质材料中的含量超出SJ/T 11363-2006的限量要求。
×: 表示该有害物质在该部件的某一均质材料中的含量超出SJ/T 11363-2006的限量要求。



1

Package Contents

- 1 CC2000 USB License Key
- 1 User Instructions
- 1 Software CD

2-2

CC2000 Requirements

Operating Systems

- Supported operating systems for client workstations that connect to the CC2000 are shown in the table, below:

OS		Version
Windows	RedHat	2000 and higher
	Fedora	7.1 and higher
	SuSE	9.0 and higher
Linux	Mandriva (Mandrake)	9.0 and higher
	AIX	4.3 and higher
UNIX	FreeBSD	4.2 and higher
	Sun	Solaris 8 and higher

- Supported operating systems for users that log into the CC2000 include Windows 2000 and higher, and those capable of running Sun's Java Runtime Environment (JRE) 6, Update 11, or higher.

Note:

Please install Java 32bit whatever your Windows system is 32bit or 64bit. If install Java 64bit on your Windows system 64bit, then it might cause some functions unworkable.

Browsers

Supported browsers for users that log into the CC2000 include the following:

Browser		Version
Internet Explorer		6 and higher
Chrome		8.0 and higher
Firefox	Windows	3.5 and higher
	Linux	3.0 and higher
Safari	Windows	4.0 and higher
	Mac	3.1 and higher
Opera		10.0 and higher
Mozilla	Windows	1.7 and higher
	SUN	1.7 and higher
Netscape		9.0 and higher

Device Requirements

All ATEN IP products must be at a firmware level that contains the CC Management function, and the CC Management function must be enabled. Download and install the latest version of the relevant firmware from our Website, if necessary.

Note: Devices must be configured to communicate on the same port that you configure for the CC2000's Device Port

3-1

CC2000 Server Installation

Windows Version Installation

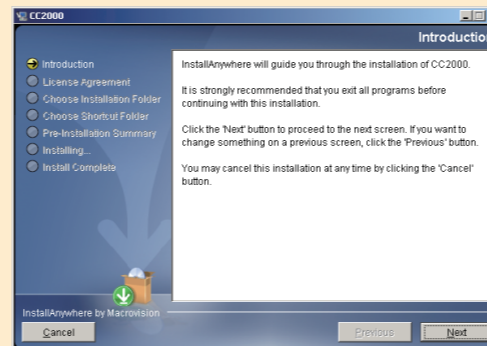
Before running the installation program make sure of that the Sun's Java Runtime Environment (JRE) 6, Update 11, or higher has been installed on your system. If not, you need to download and install it. You can get the latest version from the Java web site: <http://java.com>

After the JRE has been installed on your system, you are ready to install the CC2000 program.

Starting the Installation

To install CC2000 on a Windows system, do the following:

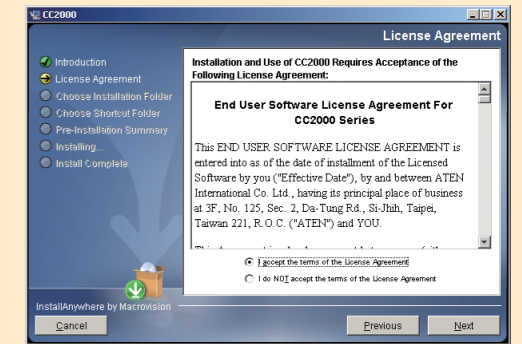
- Put the software CD that came with your package into the computer's CD or DVD drive.
- Go to the folder where *CC2000Setup_Win.exe* is located, and execute it. Then click **Next** to move on.



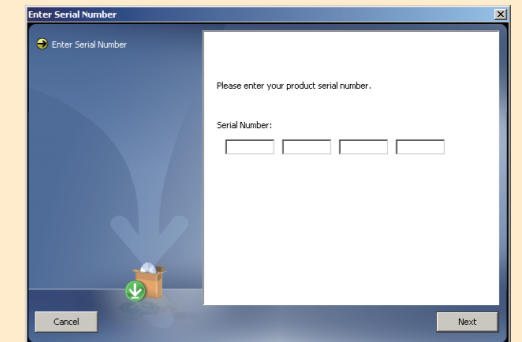
3-2

CC2000 Server Installation

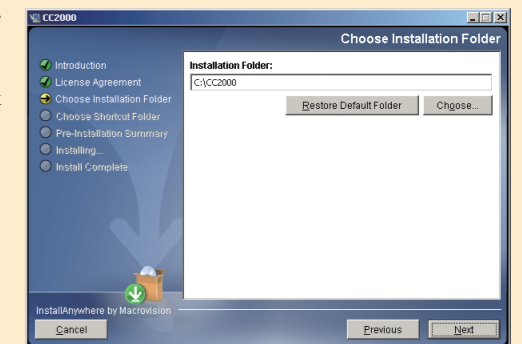
- When the License Agreement screen comes up, click to enable the I accept... radio button, then click **Next** to continue.



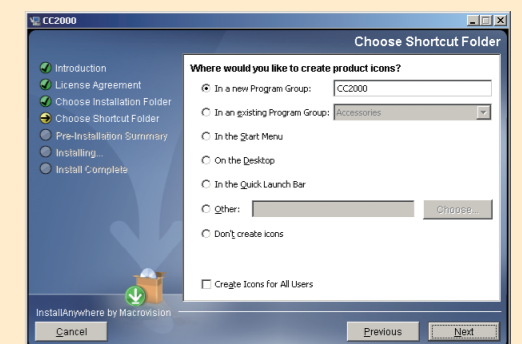
- When the CC2000's software serial number screen comes up, Key in the Serial number. click **Next** to continue.



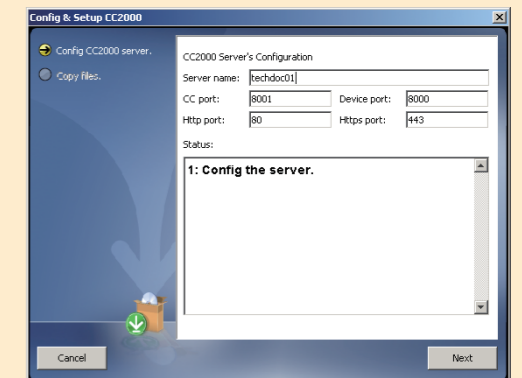
- In the **Choose Installation Folder** dialog box, specify the CC2000's installation folder. If you don't want to use the default entry, click **Choose...** to browse to the location that you want, then click **Next** to continue.



- In the **Choose Shortcut Folder** dialog box, click one of the radio buttons to specify where you would like to create product icons, then click **Next** to continue.



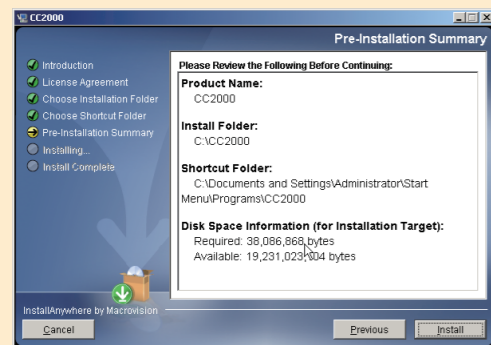
- In the Configuration dialog box that comes up, fill in the fields according to the information provided in the table below:



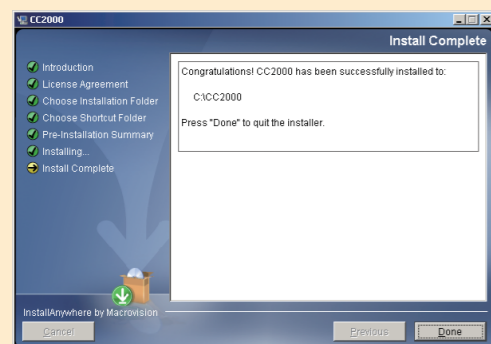
3-3 CC2000 Server Installation

Heading	Explanation
Server name	The dialog box presents the default name for the server – as defined in the Windows <i>Computer Name setting</i> . You can choose a different name to identify the server on the CC2000 installation, if you wish. The name can be from 2–32 Bytes in any supported language. Note: 1. 1 Byte = 1 English alphanumeric character. 2. The following characters may not be used: \n " ' ' 3. This name is only for CC2000 server purposes – it doesn't change the actual computer name.
CC port	The port that the CC2000 server uses to communicate with other CC2000 servers. The default is 8001. Note: 1. This is the CC Port referred to on the This Server web page 2. Although each CC2000 server on the system can use its own port setting, for ease of management we recommend that all CC2000 servers use the same port setting.
Device port	The port that the CC2000 server uses to communicate with the devices (ATEN IP products) on the installation. The default is 8000. Each CC2000 can have a separate Device port number, but in order to communicate with the devices connected on its network segment, those devices must be configured to use the same port as the one set here.
HTTP port	The port that the CC2000 server uses for web communication. The default is 80. If you use a different port, users must specify the port number in the URL of their browsers.
HTTPS port	The port that the CC2000 server uses for secure web communication. The default is 443. If you use a different port, users must specify the port number in the URL of their browsers.

- After the fields have been filled, click **Next** to continue.
- Files are now copied to the installation folder. Once the files have been copied, click **Continue** to move on.
- The **Pre-Installation Summary** screen appears. If you wish to change anything, click **Previous** to go back. If the information is correct, click **Install**.

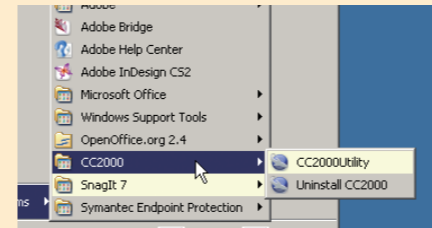


- When the installation utility brings up a screen informing you that the installation has completed successfully, click **Done** to exit the installer.



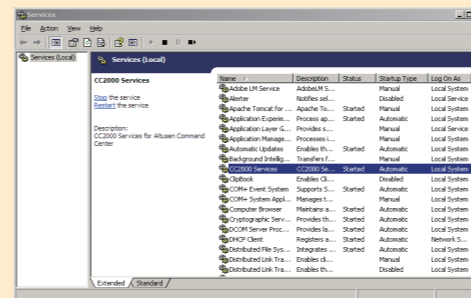
3-4 CC2000 Server Installation

- At the completion of the installation, a CC2000 entry is created in the Windows Start menu.



Post-installation Check

After the installation completes successfully, the CC2000 program starts automatically (and starts automatically with every bootup). To check that the CC2000 has started, navigate through the following folders: Control Panel → Administrative Tools → Services. Look down the list to the CC2000 entry. If the CC2000 is running it will appear in the services list. You should see a screen similar to the one, below



The entry for the Status field should say **Started**. If it does not, right click anywhere on the CC2000 entry line and select **Start** from the pop up menu.

Linux Version Installation

The procedure for installing CC2000 on a Linux system is similar to that for Windows, but there are Java considerations to take note of first. If Java isn't already installed on your system, you will need to download from the Java web site: <http://java.com>

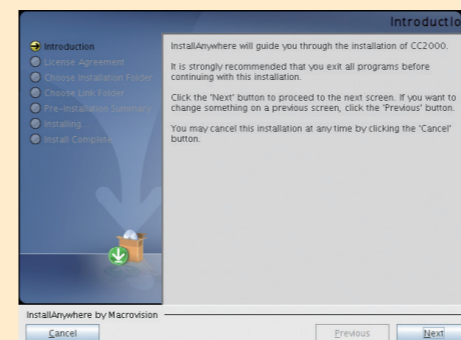
Note:

If your Linux system is 32bit, please install Java 32bit version. In other words, if your Linux system is 64bit, please install Java 64bit version.

After making sure that the appropriate version of the JRE has been installed, do the following:

- Put the software CD that came with your package into the computer's CD or DVD drive.
 - Go to the folder where **CC2000Setup_Linux.bin** is located, and run it.
- Note:** 1. You must run the installation program as the root user.
2. Make sure that the installation file has executable permissions
3. For some versions of Linux, the program must be run in a terminal.

- When the opening screen comes up and click **Next** to move on.



- From here, the installation procedure is the same as the one for Windows. Refer to the Windows installation procedure, for details on how to proceed.

Post-installation Check

After the installation completes successfully, the CC2000 program starts automatically (and starts automatically with every bootup).

To check that the CC2000 has started, start, stop, and restart, the service by issuing the following commands (as root) from a terminal console:

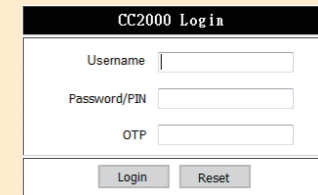
- `/etc/init.d/cc2000service start` #to start the service
- `/etc/init.d/cc2000service stop` #to stop the service
- `/etc/init.d/cc2000service restart` #to restart the service
- `/etc/init.d/cc2000service status` #to check the service status

4 Browser Operation

Logging In

To log into the CC2000, do the following:

- Open the browser and specify the IP address of the CC2000 in the browser's URL bar.
- If any Security Alert dialog boxes appear, accept the certificate – it can be trusted. After a moment, the Login page appears.



- Provide your CC2000 Username and Password, then click **Login**.

Note: There is a pre-installed system administrator account that can be used to log in for the first time to begin creating users and groups, adding devices, configure the system, etc. The Username for this account is **administrator**; the password is **password**. For security purposes, we strongly recommend you change this to something unique.

5 Primary / Secondary Setup

Once the software is installed on the server, the next step is to set the server up as a primary or secondary.

If this server is going to be a primary:

Insert the license key into a USB port on your primary server. Log into the CC2000; click the **System Management** tab. On the Main Menu bar, click **License**. Click **Upgrade** at the top right of the main panel. Once the upgrade has completed, it is no longer necessary to keep the key plugged into the USB port. Remove the key and place it somewhere safe, since you will need it for future upgrades.

If you lose the USB license key, contact your dealer to purchase another one. If you supply the key's serial number the new key will contain all of the information that was stored on the lost key.

If this server is going to be a secondary:

Log into the CC2000; click the **System Management** tab. On the Main Menu bar, click **This Server**. In the page that appears, enter the required information in the appropriate fields, then click **Register** at the top right of the main panel.

Note: For the **Administrator username** field, we recommend that you use the default Super Administrators username (**administrator**); for the **Administrator password** you must use the Super Administrator's current password. The default is password, but it may have been changed to something else.

Device Deployment

Before devices can be managed, they must first be added into the system. This involves four basic steps:

- Connecting the devices to the same network segment as the CC2000. You must do this for the Primary and each Secondary.

2. Once the devices have been connected to the same network segment as the CC2000, the CC2000 managing that segment must be made aware of them. This can be done either by enabling the **CC Management** function on the device's ANMS page or with the **Initialize devices IP/Port** function on the Tools menu. Each Secondary, then notifies the Primary of the devices connected to it.

Note: 1. The secondary can make sure that the devices that are connected to them have been successfully recognized by clicking the **Show Available Devices** button (at the top-right of the panel). The devices will show up in the list that appears.

2. Clicking the Primary's **Show Available Devices** button lists all the available devices including all of the ones connected to its Secondary. (This gives the same result as dropping down its **Add device** list.)

3. Devices that already have been added to the CC2000 management system do not show in the list of available devices.

3. Next, from the Primary CC2000 unit, the devices recognized in step 2 must be added to the CC2000's management system

4. Finally, devices can be created either as actual physical port devices (by unlocking each port), or by combining various ports into logical device constructs (ATEN Generic Devices, Aggregate Devices, Group Devices, etc.).