

# CCKM

## Matrix Manager

- ATEN's Matrix Manager software provides IT administrators with tools to centralize the control and management of KE6900 / KE6940 devices in their IT environment. It allows easy administration of all KE6900 / KE6940 devices with a user-friendly, web-based GUI.

Matrix Manager's Primary-Secondary architecture safeguards data transmissions through built-in redundancy factors, including automated database backup of Primary and Secondary servers and devices in addition to real-time database updating. Redundancy ensures that if any of Matrix Manager's servers go down, the system will remain functioning, since a redundant Secondary server maintains all the required services until the Primary unit comes back up.

Through ATEN's Matrix Manager software, the KE6900 / KE6940 provide advanced features for username and password authentication, user authorization and auto-detection of all devices that can be switched and shared. With security transmissions in mind, the KE6900 and KE6940 implement AES-128 bit encryption, while RADIUS, LDAP and AD ensure secure authentication.

IT administrators will receive the following benefits from implementing ATEN's Matrix Manager:

- Advanced features, such as multi-display, fast switching and profile broadcasting.
- Greater access to quick and easy control and configuration tools for KE devices.
- More secure and reliable access thanks to AES encryption and redundancy servers.

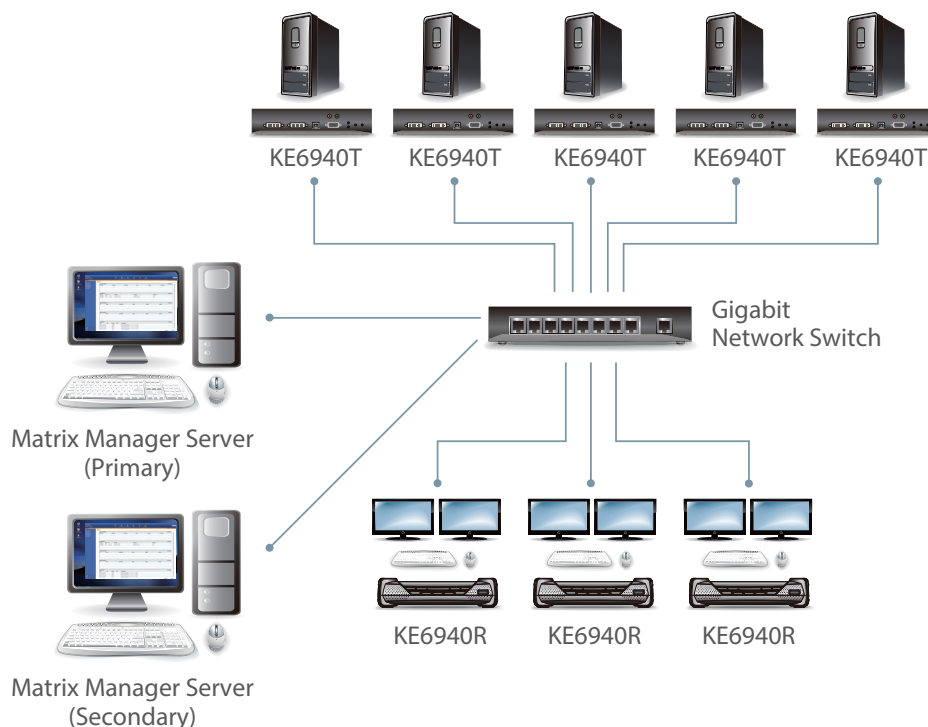


## Features

- Centralized KE6900 / KE6940 management software
- **Unlimited Video Walls – create multiple video walls with up to 8 x 8 (64 displays max.) in each layout *New!***
- Easy configuration for KE6900 / KE6940 devices via web-based UI
- One-to-one, one-to-many, many-to-one and many-to-many KE TX/RX connection
- Only authenticated users can configure Matrix Manager and KE TX/RX devices
- Administrators can set different permissions to meet users' requirements
- Primary-Secondary architecture provides redundancy services
- Multi-Display can cascade up to 4 sets of KE6900 / KE6940 devices
- Centralized control of all your KE6900 / KE6940 devices
- Administrators can easily view device status and system logs in the GUI dashboard
- Multi-platform installation support: Windows, Linux
- Multi-platform client support: Windows, Mac OS X, Linux, Sun
- Multi-browser support: Internet Explorer, Chrome, Firefox, Safari, Opera, Mozilla
- Profiles can save reserved connections for broadcasting use
- User account authentication and management
- Powerful security features include both internal and external authentication – external authentication supports LDAP, Active Directory, RADIUS and TACACS+
- Browser-based GUI offers a multi-language interface to minimize user training time and increase productivity
- Filter and export function for system logs
- Email notification of specified system events
- Fast switching feature can change between transmitters/receivers in under a second

## Benefits

<b>Easy to Use interface</b>	<p>The Matrix Manager offers a user-friendly, intuitive, browser-based GUI for simplified access to IT equipment in global data centers and remote offices. The browser-based GUI offers a multilingual interface to minimize user training time and increase productivity.</p>
<b>Centralized Devices and User Permission Management</b>	<p>Matrix Manager software provides centralized management and configuration of remotely distributed KE6900 devices. It also integrates user accounts with AD, LDAP, TACACS+ and RADIUS servers for improved authentication and authorization.</p>
<b>Primary-Secondary Architecture</b>	<p>Matrix Manager software uses a Primary-Secondary architecture to offer service redundancy with real-time database updating. Once enabled, a Secondary server can automatically substitute for the Primary if the latter fails. Redundancy also means that its function and information is not lost – a redundant Secondary unit can provide the required management services until the offline unit comes back up.</p>
<b>Logging, Audits and Alerts</b>	<p>The Matrix Manager offers flexible logging and reporting options with audit trails for diagnostics and troubleshooting. Powerful search functions and extensive sorting and filtering of log categories that quickly pinpoint the events you are searching for are also provided. Complete logs, as well as log search results, can be exported for audit and analysis.</p>
<b>Multi-Display</b>	<p>The Matrix Manager can cascade 4 sets of KE6900 or KE6940 devices to support up to 8 display monitors for each server.</p>



## Matrix Manager vs. Matrix Manager Lite Comparison

Function	Matrix Manager	Matrix Manager Lite*
Device Licenses	Unlimited	8 (Sum of TX and RX)
User Management	Yes	Yes
Permission Configuration	Yes	Yes
Downloadable Software	No (CD-ROM)	Yes (ATEN Website)
USB License Key	Yes	No
Redundancy	Yes	Yes
Multi-Display	Yes	Yes

**Note:** \*Download Matrix Manager Lite from the ATEN eService website.

## USB License Key Specifications

Function		CCKM USB License Key
Environment	Operating Temp.	0 – 40°C
	Storage Temp.	-20 – 60°C
	Humidity	0–80% RH, Non-condensing
Physical Properties	Housing	Metal & Plastic
	Weight	0.01 kg
	Dimensions (L x W x H)	8.36 x 2.77 x 1.37 cm

