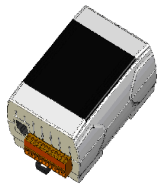


1 What's in the shipping package?

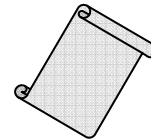
The package includes the following items:



iDS-700 Series



Software CD



Quick Start
(This Document)



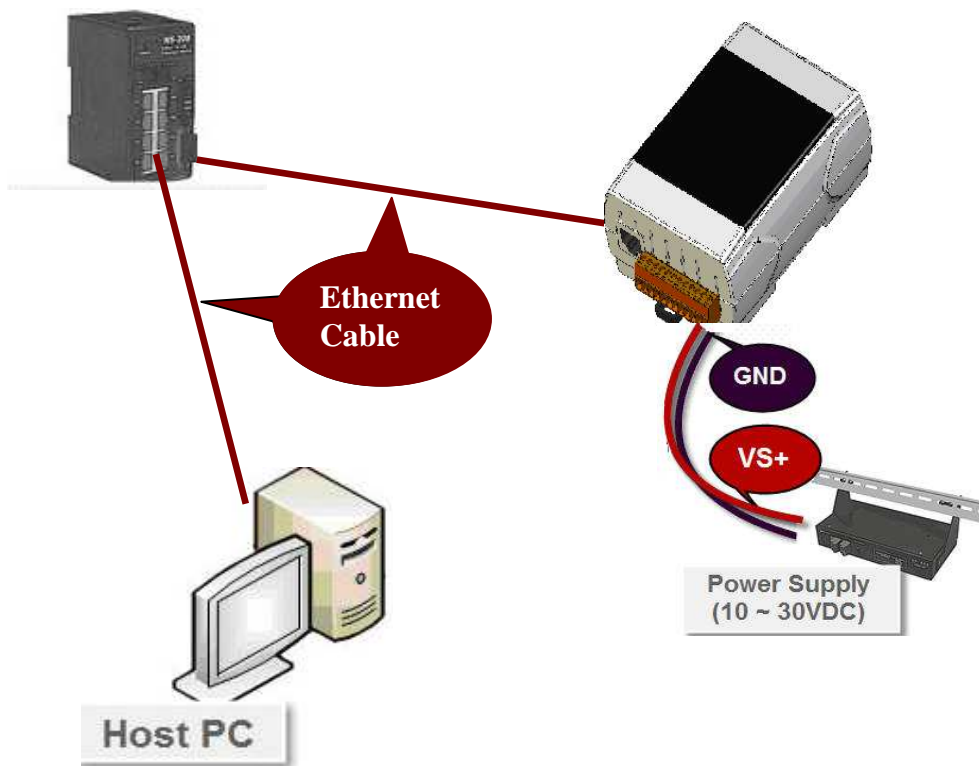
CA-0910 Cable

2 Preparations for devices

1. Power Supply: **+10 ~ +30 V_{DC}**. (Ex: DP-665)
2. Ethernet Hub. (Ex: NS-205)
3. Make sure your PC has workable network settings.
4. Disable or well configure your Windows firewall and Anti-Virus firewall first, else the "Search Servers" on page 3 may not work. (Please contact with your system Administrator)

3 Connecting the Power and Host PC

1. Connect both the iDS-700 and your computer to the same sub network or the same Ethernet Switch, and power the iDS-700 on.



4 Installing software on your PC

Install VxComm Utility(v 2.12.07 or later version):

The software is located at:
CD: \NAPDOS\Driver\VxComm_Driver



http://ftp.icpdas.com/pub/cd/8000cd/napdos/driver/vxcomm_driver/

5 Configuring Ethernet Settings

1. Double click the Web Browser and input the iDS-700's IP address(default IP "**192.168.255.1**").
2. Please refer to below steps into the web management page.

The screenshot shows the web management interface for the iDS-700 Series. The browser address bar displays the IP address **192.168.255.1**, with a red circle and arrow pointing to it and a red note: "To type default IP". The page title is "iDS-700 Series" and "LogOut". The "Login" section contains a "UserName" field with "admin" and a "Password" field with ".....". A red circle and arrow points to the "Login" button, with a red note: "To click 'Login' button". A red arrow points from the login page to the main configuration page.

The main configuration page shows the "iDS-700 series" title and "Firmware Version: VCOM Device Server v0.2j (build at May 19 2014) with lib v5". The left sidebar lists the following settings:

- DEVICE INFORMATION
 - Basic Setting
 - Firmware upgrade
- NETWORK SETTING
 - Network
 - SNMP
- SERIAL PORT SETTING
 - Port1
 - Advanced Options
 - Port2

3. Click the **“Network”** link to configure network. After user configure the network settings, user must click **“save”** button to save the configuration.

iDS-700 Series LogOut

DEVICE INFORMATION
Basic Setting
Firmware upgrade

NETWORK SETTING
Network
SNMP

SERIAL PORT SETTING
Port1
- Advanced Options
Port2
- Advanced Options

DEVICE SERVER

Network Setting

MAC Address: 78:C5:E5:95:C6:A8

IP1 Configuration: DHCP

IP address: 10.1.0.84

netmask: 255.255.0.0

gateway: 10.1.0.254

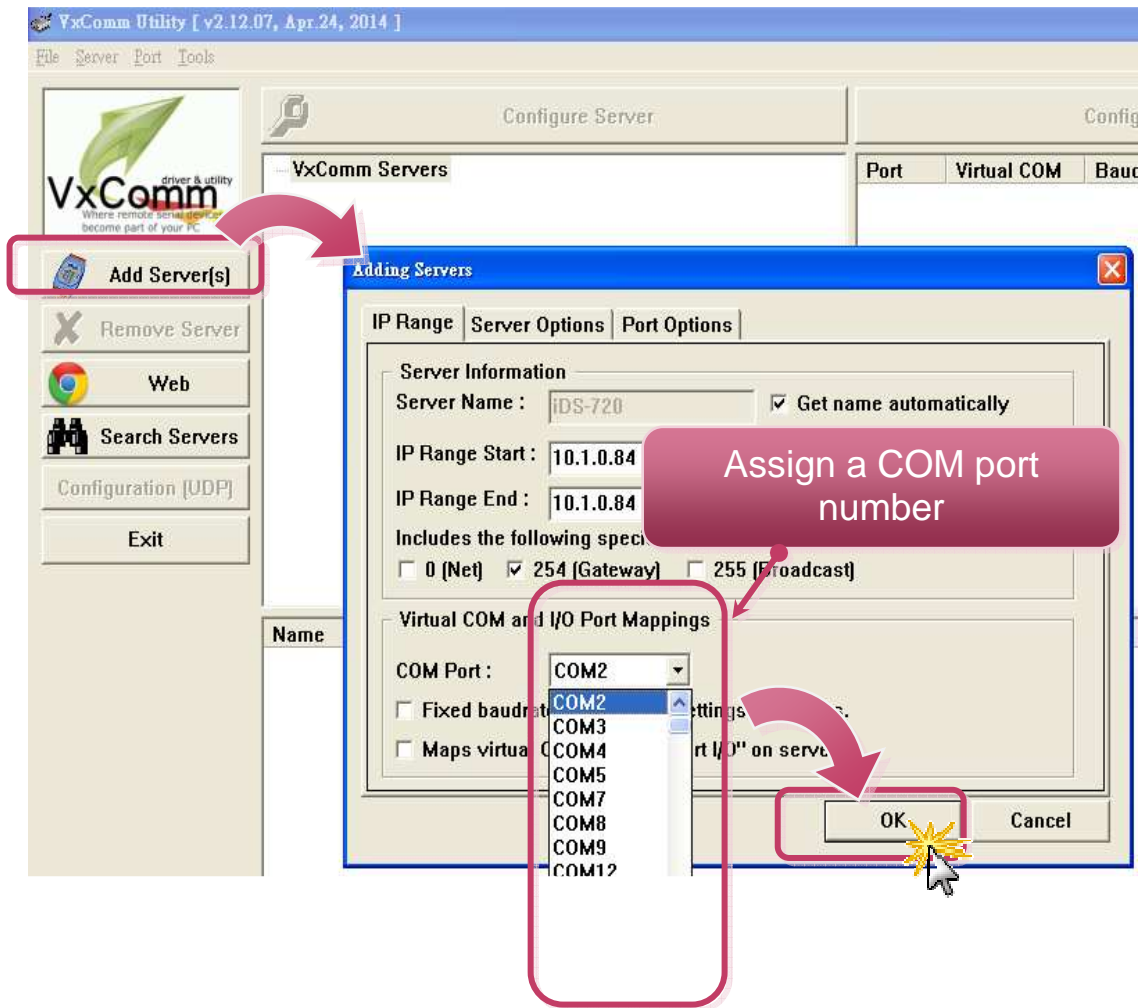
DNS1: 10.0.0.3

DNS2: 10.0.0.9

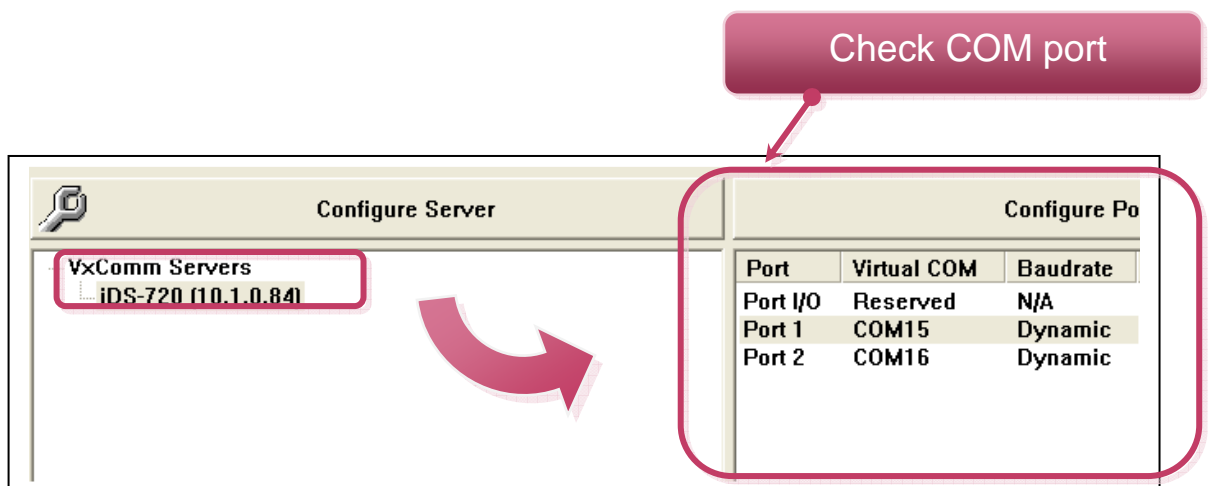
save

6 Configuring Virtual COM Ports

1. Double click the VxComm Utility shortcut on the desktop.
2. Click the **“Add Server[s]”** button. Assign a COM Port number and click **“OK”** to save your settings.



3. Click on iDS-700 name and check the virtual COM port mappings on the PC.

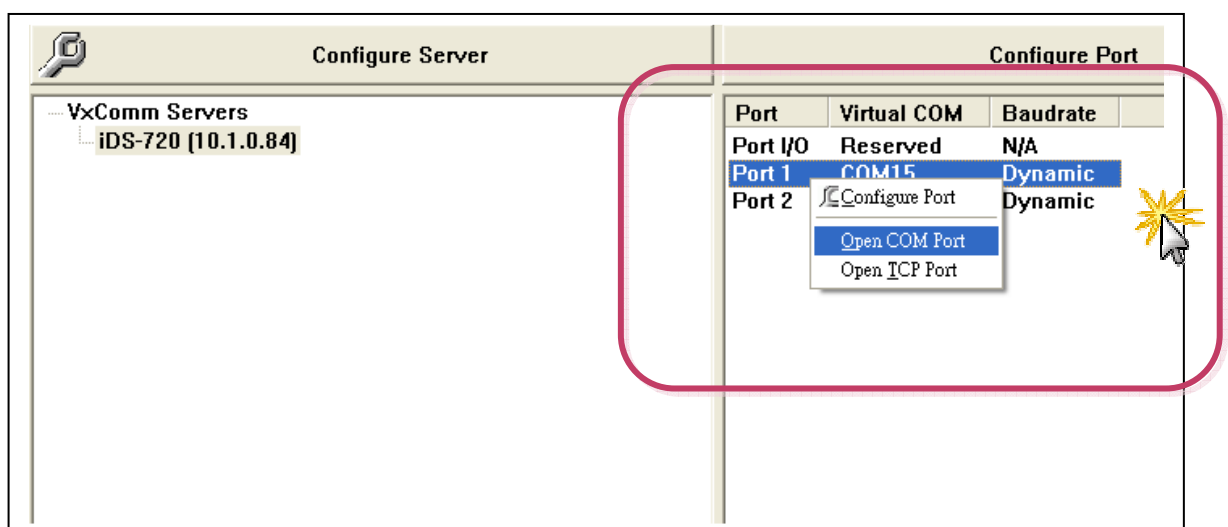


4. Click "**Tools**" >> "**Restart Driver**", and then click the "**Restart Driver**" button.

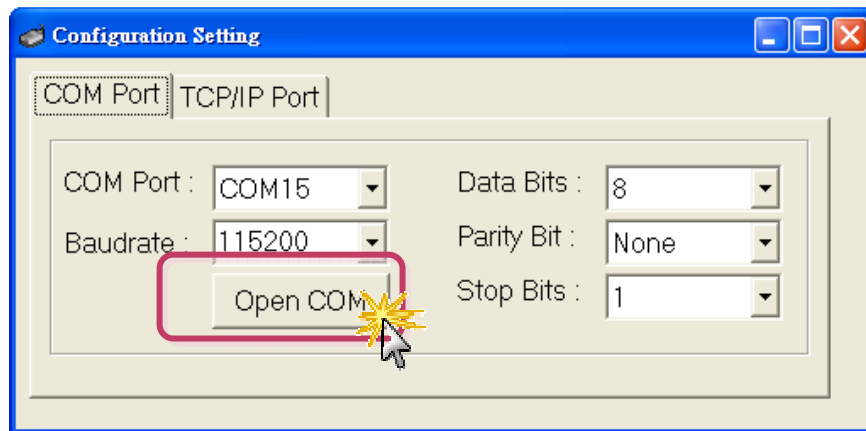


7 Testing iDS-700

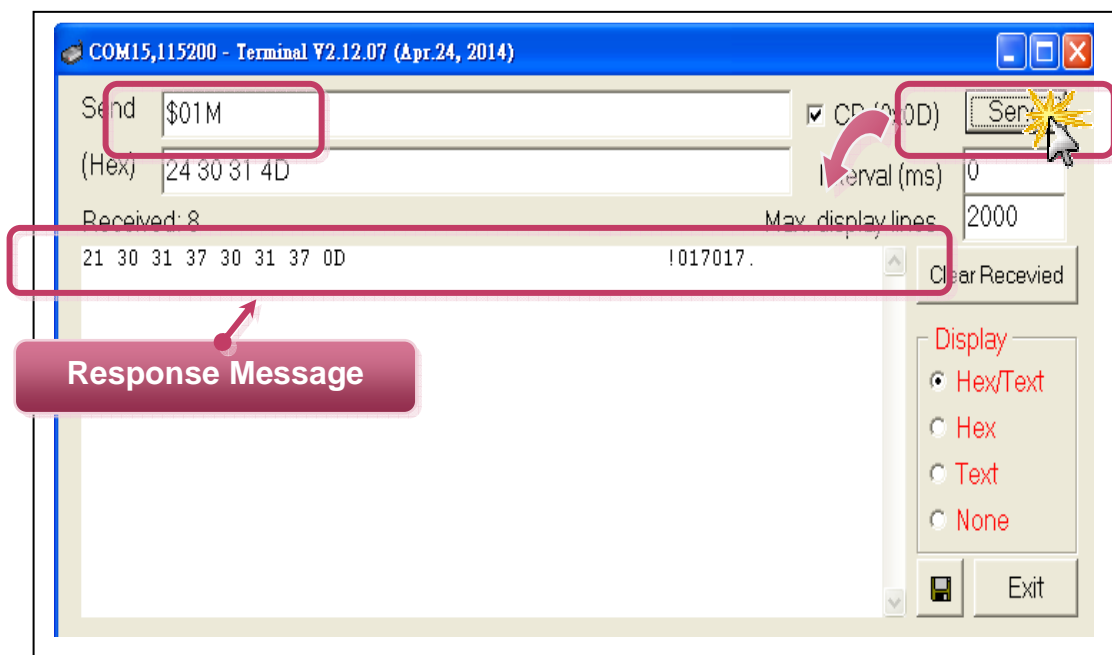
1. Right click Port 1 and then choose the "**Open COM Port**" item.



2. Check that the configuration of the COM Port is correct and then click the **"Open COM"** button.



3. Type a string in the send field then click the **"Send"** button. If a response is received, it will be displayed in the received field. (ex sending a "DCON Command" to ICP DAS i7k modules).



4. If the test is successful, then your COM port program should now be able to work with this Virtual COM Port.

8

Recovery iDS Factory Setting

1. Click the "Reset" Button(3~5 seconds) to recovery the iDS-700 modules's factory setting.

IP : 192.168.255.1
NetMask : 255.255.255.0
Gateway : 192.168.255.254
Protocol : icpdas protocol



Related Information

- **iDS-700 Series Product Page:**
http://www.icpdas.com/root/product/solutions/industrial_communication/pds/ids-700.html
- **iDS-700 Documentations:**
CD:\Napdos\iDS\iDS-700\document\
<http://ftp.icpdas.com.tw/pub/cd/linpac/napdos/ids-700/document/datasheet/ids-700.pdf>
- **iDS-700 Software:**
<http://ftp.icpdas.com.tw/pub/cd/linpac/napdos/ids-700/software>
- **NS-205 and DP-665 Product Page (optional):**
<http://www.icpdas.com/products/Switch/industrial/ns-205.htm>
http://www.icpdas.com/products/Accessories/power_supply/dp-665.htm



ICP DAS Web Site: <http://www.icpdas.com>
Contact Us (E-Mail): service@icpdas.com , service.icpdas@gmail.com