

# PDS SERIES QUICK START GUIDE



*For PDS-5105D-MTCP*

English/November 2011/Version 1.0

## 1

### What's in the shipping package?

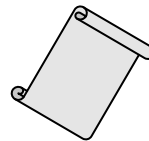
The package includes the following items:



PDS-5105D-MTCP



Software CD



Quick Start Guide  
(This Document)



CA-0910  
Cable



Screwdriver

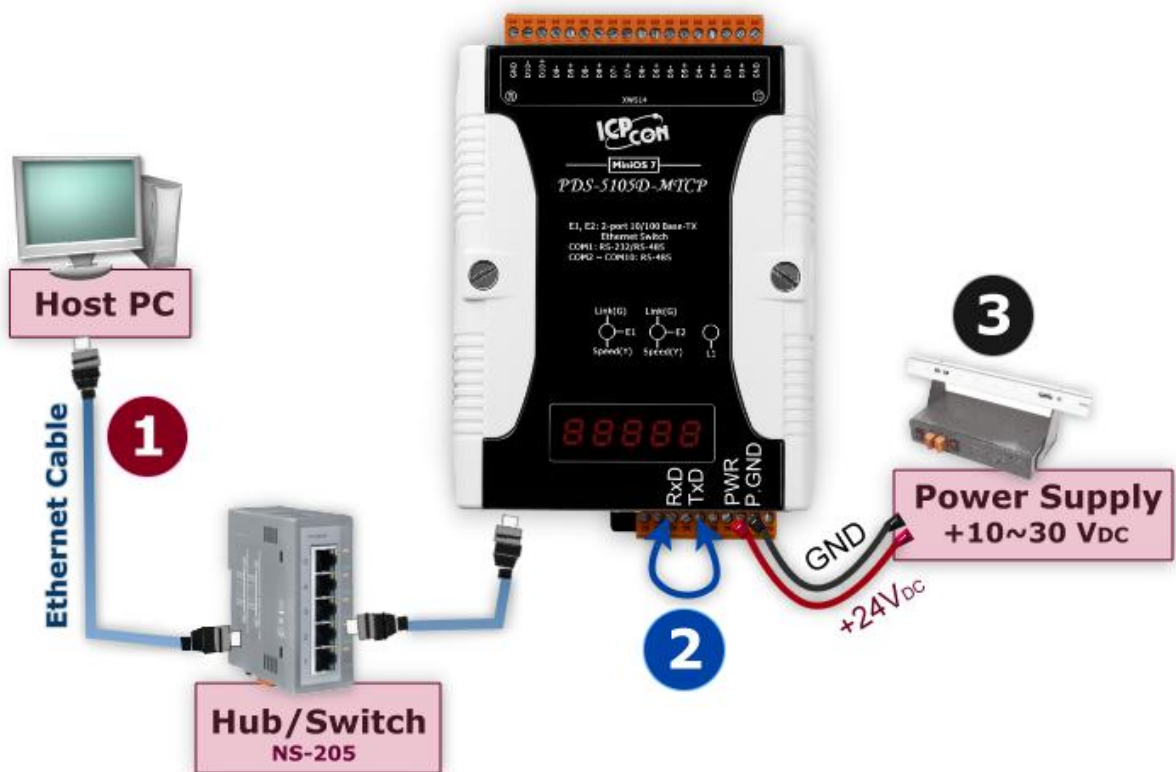
## 2

### Preparations for Device

1. Power Supply: +10 ~ +30 V<sub>DC</sub> (Ex: DP-665)  
[http://www.icpdas.com/products/Accessories/power\\_supply/power\\_list.htm](http://www.icpdas.com/products/Accessories/power_supply/power_list.htm)
2. Ethernet Hub (Ex: NS-205)  
[http://www.icpdas.com/products/Switch/industrial/industrial\\_list.htm](http://www.icpdas.com/products/Switch/industrial/industrial_list.htm)
3. Make sure your PC has workable network settings.
4. Disable or well configure your Windows firewall and Anti-Virus firewall first, else the "Search Servers" on page 3 may not work. (Please contact with your system Administrator)

# 3 Connecting the Power and Host PC

1. Connect both the PDS-5105D-MTCP and your computer to the same sub network or the same Ethernet Switch.
2. Short the RxD and TxD pins (Pin4 and Pin5) of COM1 for self-test.
3. Supply +10~+30 V<sub>DC</sub> power to the PDS-5105D-MTCP module.



# 4 Installing Software on Your PC

**Install VxComm Utility** (V2.11.03 or later):

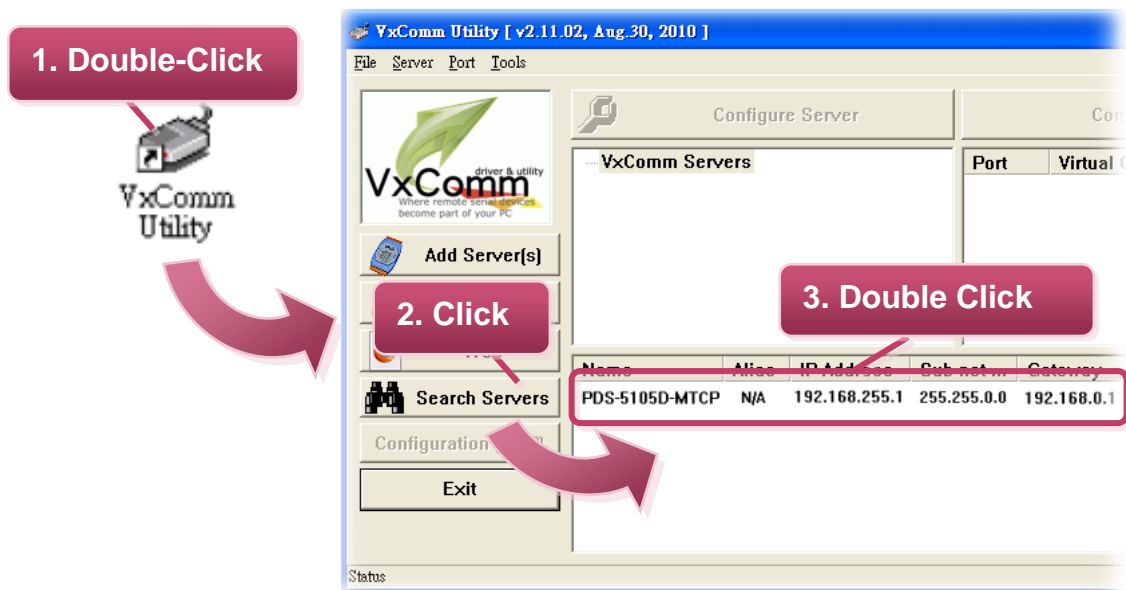
The software is located at:

CD: \NAPDOS\Driver\VxComm\_Driver

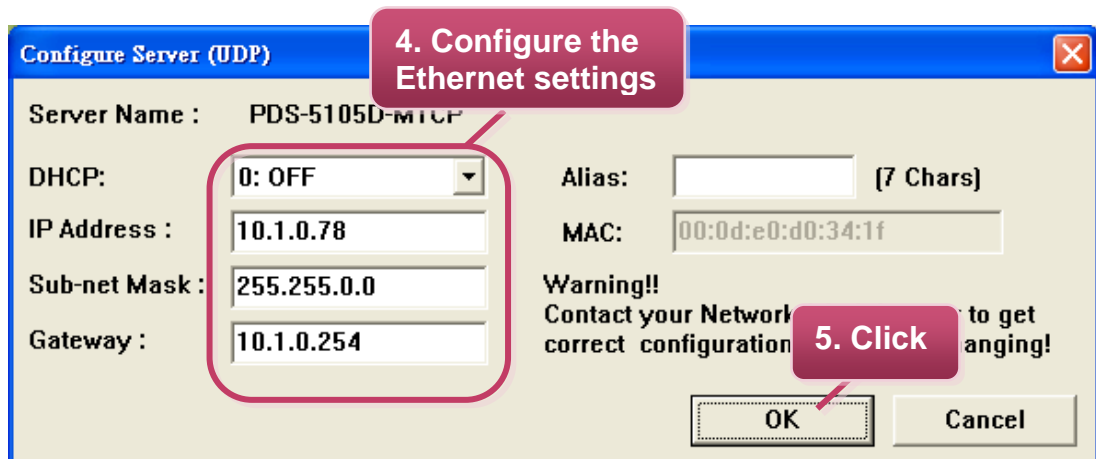
[http://ftp.icpdas.com/pub/cd/8000cd/napdos/driver/vxcomm\\_driver/](http://ftp.icpdas.com/pub/cd/8000cd/napdos/driver/vxcomm_driver/)

# 5 Configuring Ethernet Settings

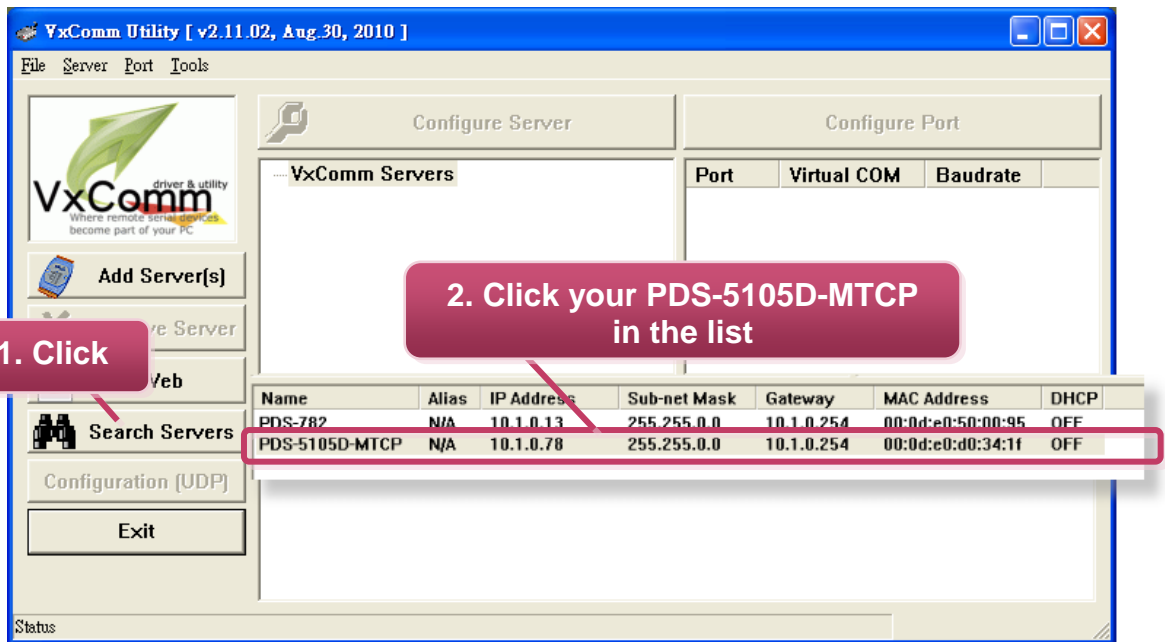
1. Double click the VxComm Utility shortcut on the desktop.
2. Click the "**Search Servers**" button to search your PDS-5105D-MTCP.
3. Double click the name of PDS-5105D-MTCP to open the configure server dialog box.



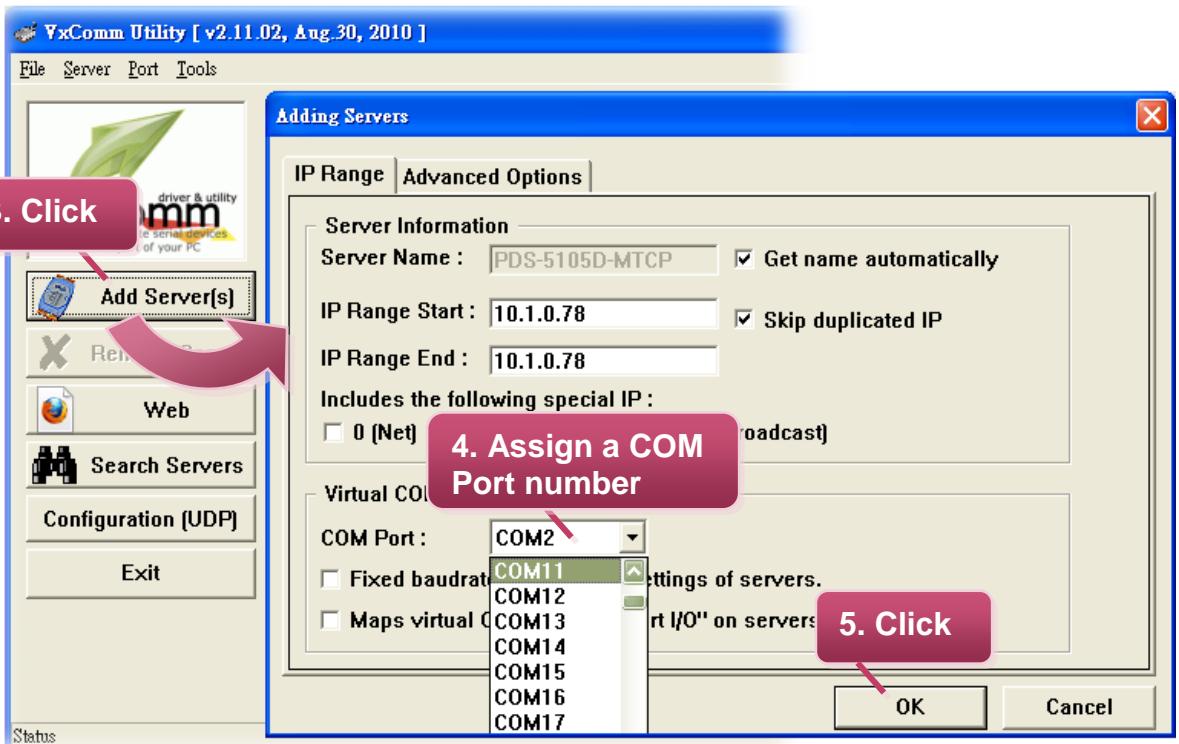
4. Contact your Network Administrator to obtain a correct network configuration (such as **IP/Mask/Gateway**). Enter the network settings and then click "**OK**" button. The PDS-5105D-MTCP will use the new setting 2 seconds later.



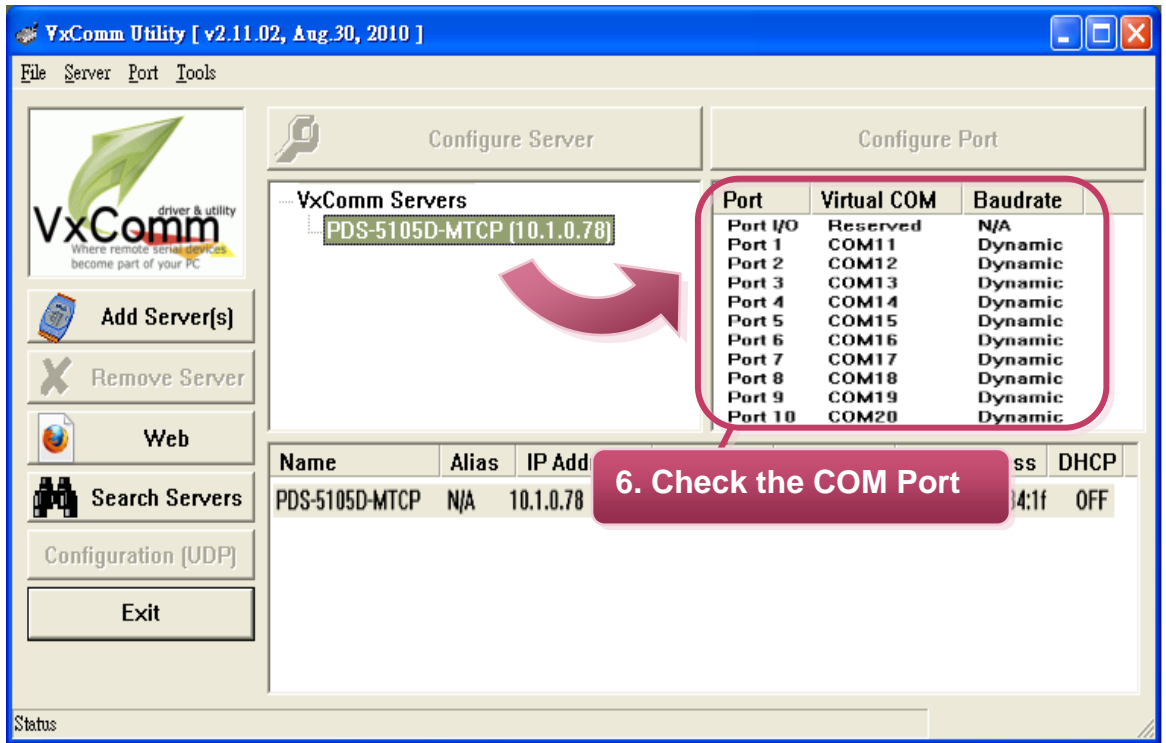
5. Wait 2 seconds and then click the **"Search Servers"** button again to ensure the PDS-5105D-MTCP is working well with new configuration.



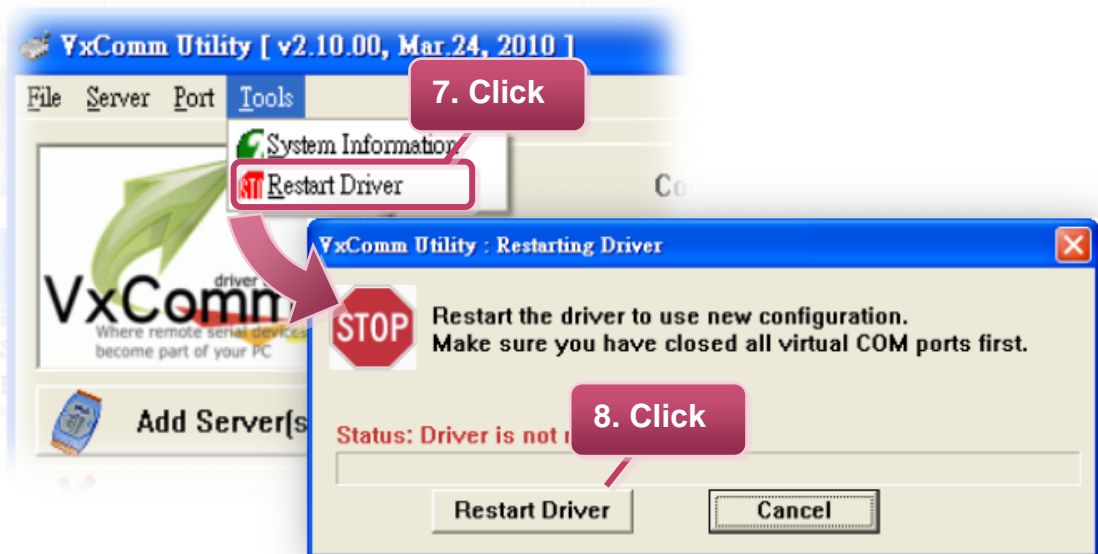
6. Click the **"Add Server[s]"** button. Assign a COM Port number and click **"OK"** to save your settings.



7. Click on PDS-5105D-MTCP name and check the virtual COM port mappings on the PC.



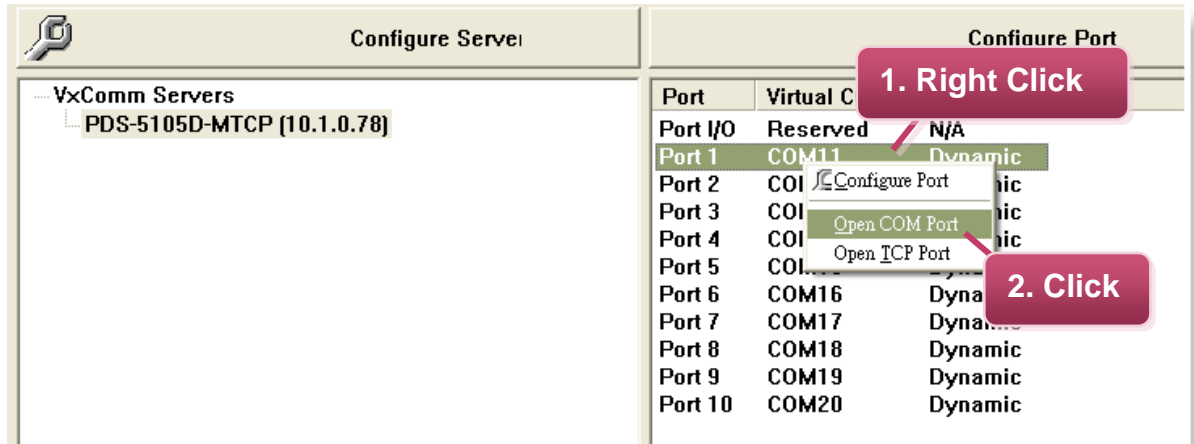
8. Click "**Tools**" >> "**Restart Driver**", and then click the "**Restart Driver**" button.



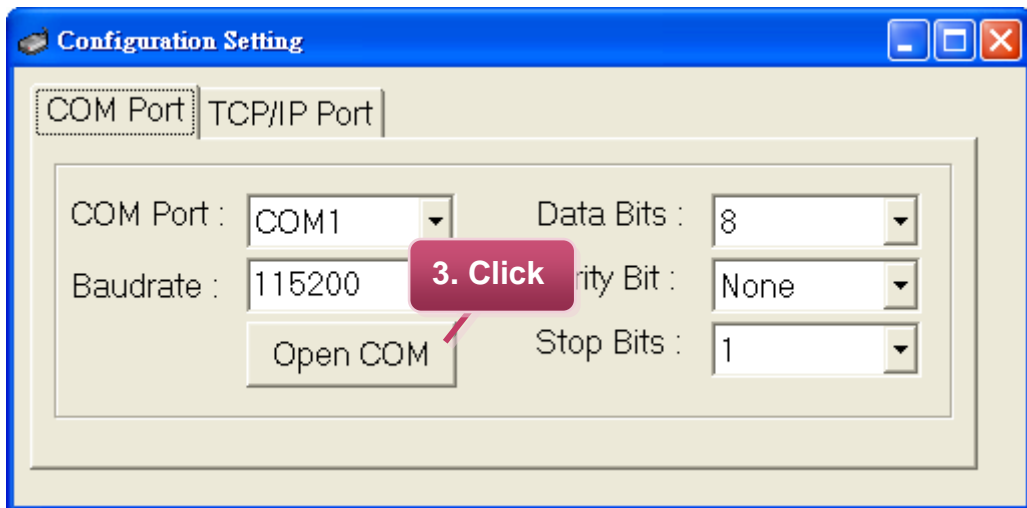
# 6

## Testing your PDS-5105D-MTCP

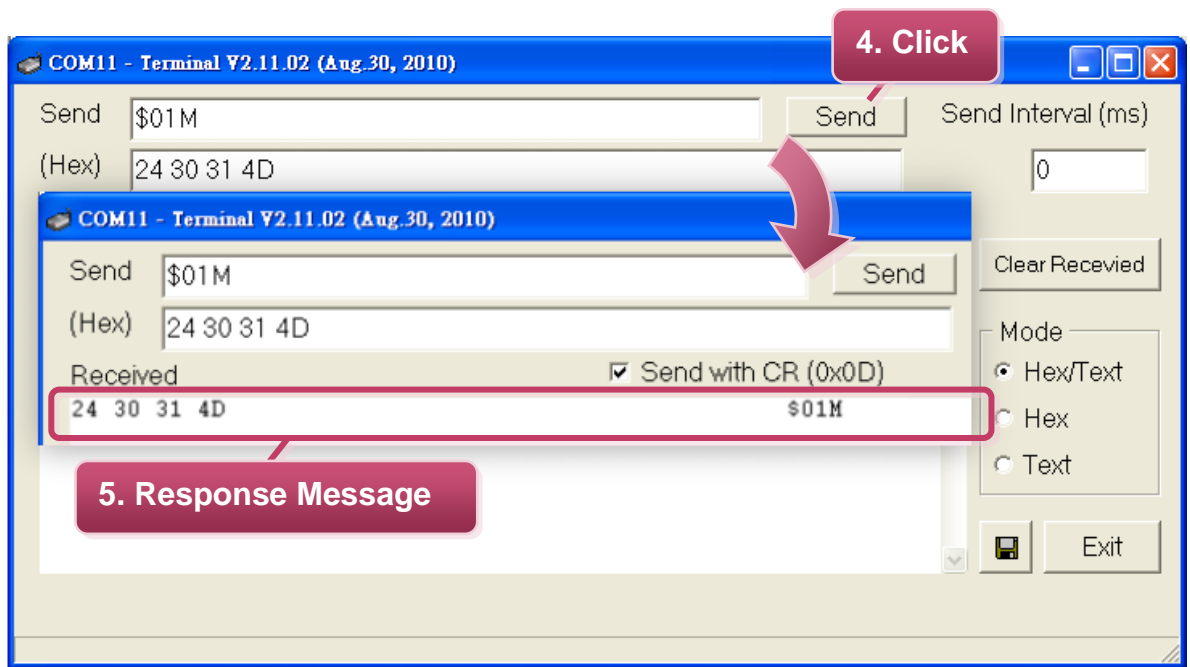
1. Right click Port 1 and then choose the "**Open COM Port**" item.



2. Check that the configuration of the COM Port is correct and then click the "**Open COM**" button.



3. Type a string in the send field then click the "Send" button. If a response is received, it will be displayed in the received field.



4. If the test is successful, your COM port program is able to work with this Virtual COM Port now.



## Related Information

- **PDS-5105D-MTCP product page:**  
[http://www.icpdas.com/products/Industrial/pds/PDS\\_Series\\_Main\\_Page.htm](http://www.icpdas.com/products/Industrial/pds/PDS_Series_Main_Page.htm)
- **DP-665 and NS-205 (optional) product page:**  
[http://www.icpdas.com/products/Accessories/power\\_supply/power\\_list.htm](http://www.icpdas.com/products/Accessories/power_supply/power_list.htm)  
[http://www.icpdas.com/products/Switch/industrial/industrial\\_list.htm](http://www.icpdas.com/products/Switch/industrial/industrial_list.htm)



ICP DAS Web Site: <http://www.icpdas.com>  
Contact Us (E-Mail): [service@icpdas.com](mailto:service@icpdas.com) , [service.icpdas@gmail.com](mailto:service.icpdas@gmail.com)