

# TPM-4100/TP-4100

## Touch Panel Monitor

### User Manual



## ► Warranty

---

All products manufactured by ICP DAS are under warranty regarding defective materials for a period of one year, beginning from the date of delivery to the original purchaser.

## ► Warning

---

ICP DAS assumes no liability for any damage resulting from the use of this product. ICP DAS reserves the right to change this manual at any time without notice. The information furnished by ICP DAS is believed to be accurate and reliable. However, no responsibility is assumed by ICP DAS for its use, not for any infringements of patents or other rights of third parties resulting from its use.

## ► Copyright

---

Copyright © 2012 by ICP DAS Co., Ltd. All rights are reserved.

## ► Trademark

---

The names used for identification only may be registered trademarks of their respective companies.

## Contact US

---

If you have any problem, please feel free to contact us.

You can count on us for quick response.

Email: [service@icpdas.com](mailto:service@icpdas.com)

---

# Table of Contents

# Table Of Contents

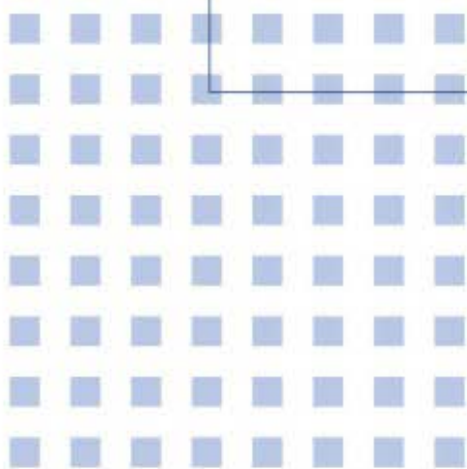
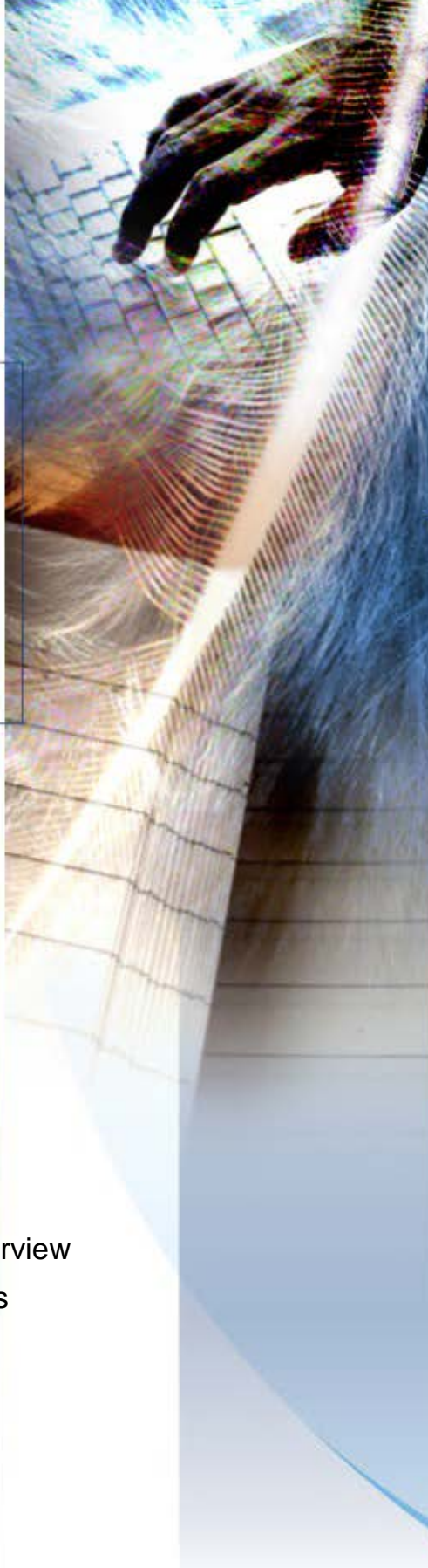
Industrial Communication Products

<b>Table of Contents</b> .....	<b>3</b>
<b>1. Introduction</b> .....	<b>5</b>
1.1. Features.....	7
1.2. Specifications.....	8
1.3. Dimension .....	9
1.4. I/O interfaces.....	13
1.5. Companion CD .....	14
1.6. System Setup.....	15
1.6.1. System Configuration .....	15
1.6.2. Panel Mounting.....	18
<b>2. Touch Driver Installation</b> .....	<b>20</b>
2.1. Windows CE 5.0 .....	21
2.1.1. USB Touch Driver.....	22
2.1.1.1. Installation for WinPAC-8000 and WinPAC-5000	23
2.1.1.2. Configuring for WinPAC-8000 and WinPAC-5000	24
2.1.1.3. Uninstall for WinPAC-8000 and WinPAC-5000	26
2.1.1.4. Other Windows CE5.0 Device .....	27
2.1.2. Serial Touch Driver.....	28
2.1.2.1. Installation for WinPAC-8000 and WinPAC-5000	29
2.1.2.2. Configuring for WinPAC-8000 and WinPAC-5000	31
2.1.2.3. Uninstall for WinPAC-8000 and WinPAC-5000	33
2.1.2.4. Other Windows CE5.0 Device .....	34
2.2. Windows CE 6.0 .....	35
2.2.1. USB Touch Driver.....	36
2.2.1.1. Installation for XP-8000-CE6.....	37
2.2.1.2. Configuring for XP-8000-CE6.....	38

# Table Of Contents

Industrial Communication Products

2.2.1.3. Uninstall for XP-8000-CE6 .....	40
2.2.1.4. Other Windows CE 6.0 Device ....	42
2.2.2. Serial Touch Driver .....	43
2.2.2.1. Installation for XP-8000-CE6.....	44
2.2.2.2. Configuring for XP-8000-CE6.....	46
2.2.2.3. Uninstall for XP-8000-CE6 .....	48
2.2.2.4. Other Windows CE 6.0 Device ....	50
2.3. Windows XP Embedded .....	51
2.3.1. Universal Driver .....	51
2.3.1.1. Installation for XP-8000 .....	52
2.3.1.2. Configuring for XP-8000 .....	57
2.3.1.3. Uninstall for XP-8000 .....	61
2.3.1.4. Other Windows XP Embedded Device	63
2.4. Windows XP/7.....	64
2.4.1. Universal Driver .....	64
2.4.1.1. Installation .....	65
2.4.1.2. Configuring.....	69
2.4.1.3. Uninstall .....	71



# 1. Introduction

This chapter provides an overview of TPM-4100/TP-4100 and its components.

The TPM-4100/TP-4100 Panel Mount Monitor adopt a standard 10.4" TFT LCD screen with rugged aluminum front bezel and support 800 x 600 resolution, and -25 ~ 75°C operating temperature. The TPM-4100/TP-4100 is also guaranteed to work with ICP DAS PAC control system, such as WP-8000 series, XP-8000 series.

## Package List

The shipping package includes the following items:

- Monitor x 1 pcs
- VGA cable x 1 pcs
- RS-232 cable x 1 pcs
- USB cable x 1 pcs
- Mounting clamp x 4 pcs
- Screw x 4 pcs
- Power supply x 1 pcs
- Companion CD containing software drivers and digital version of the user manuals x 1 pcs

# 1.1. Features

- 10.4" LCD supports 800 x 600 resolution
- Full-function OSD control keys to optimize the display
- Driver Supports Windows 2k/XP/Vista/7/XP-Embedded/WinCE 5.0/6.0
- Wide operating temperature -25 ~ +75° C
- Aluminum front bezel design ideal for rugged applications
- LED backlight technology
- Supports IP65 standard for protection against to dust and water

## 1.2. Specifications

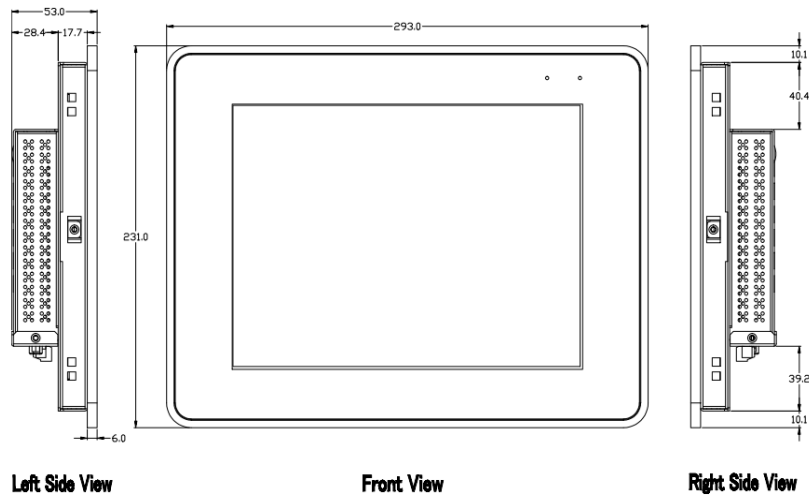
The table below summarizes the specifications of TPM-4100/TP-4100, and lists the accessories that TPM-4100/TP-4100 supports.

		Specification	
Model	TPM-4100	TP-4100	
<b>Display</b>			
Size	10.4"		
Resolution	800 x 600		
Max. color	16.7 M		
Brightness (cd/m <sup>2</sup> )	320		
Contrast ration	500:1		
Viewing angle (H/V)	140/130		
Backlight life (hrs)	50,000		
Touch panel	4-wire	5-wire	
	Analog resistive, RS-232 or USB1.1 (Type B) interface		
Input signal	VGA(analog RGB)		
<b>MMI (Man Machine Interface)</b>			
OSD control	Functions: Brightness, Contrast, Phase ,Horizontal Position, Vertical Position and Sharpness		
Power switch	Yes		
LED indicators	Power, Display signal is detected		
<b>Power</b>			
Input range	+12 ~48 V <sub>DC</sub>		
Power consumption	8.5 W		
<b>Mechanical</b>			
Material	Aluminum	Plastic	
Dimensions (W x L x H)	293 mm x 231 mm x 53 mm	290 mm x 228 mm x 53 mm	
Installation	Panel Mouting	Panel Mounting, VESA (75 x 75) Mounting	
Ingress protection	Front panel : IP65		
<b>Environmental</b>			
Operating temperature	-25 ~ +75 °C		
Storage temperature	-30 ~ +80 °C		
Ambient relative humidity	10 ~ 90 % RH (non-condensing)		



# 1.3. Dimension

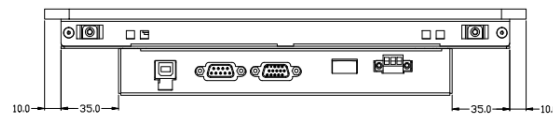
## TPM-4100



Left Side View

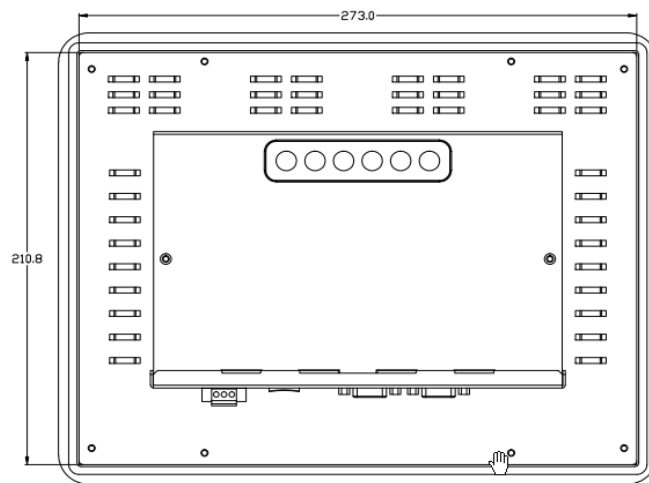
Front View

Right Side View

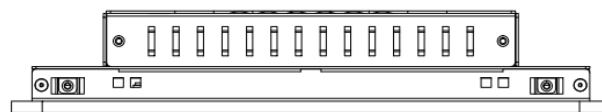


Bottom View

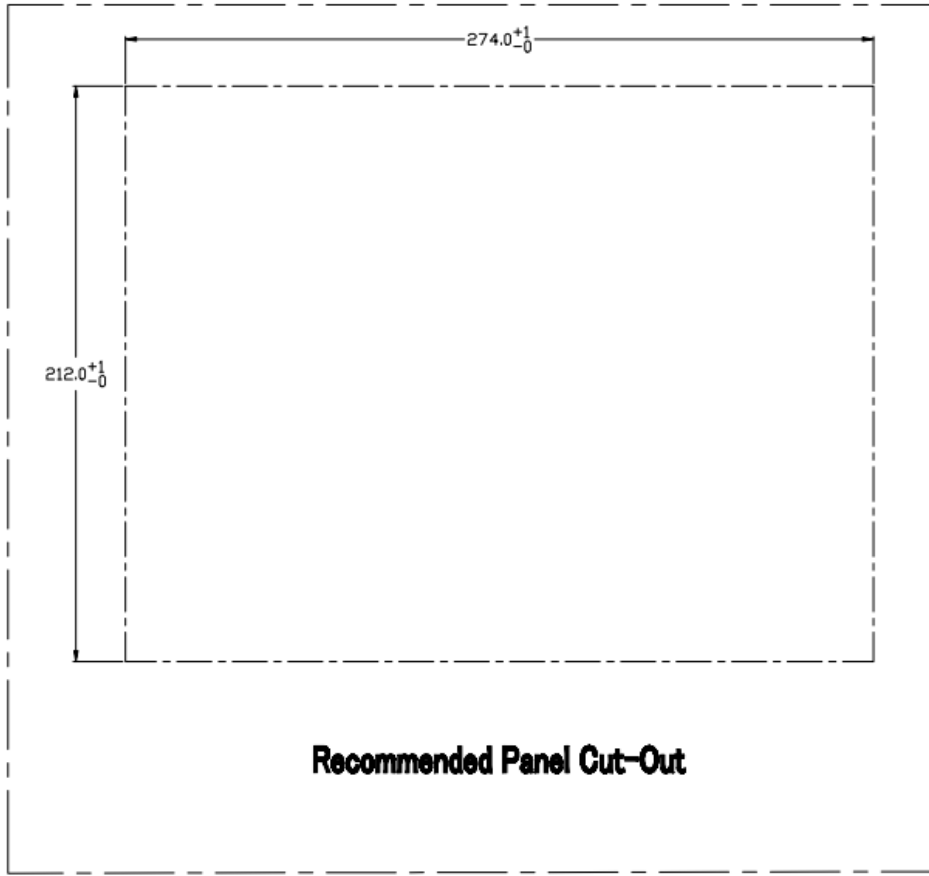
Unit: mm



Rear View

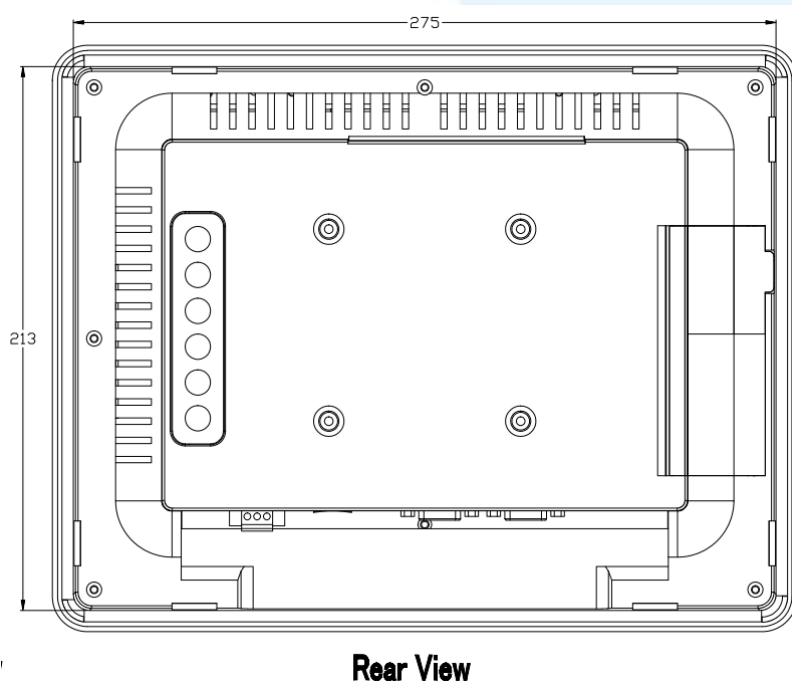
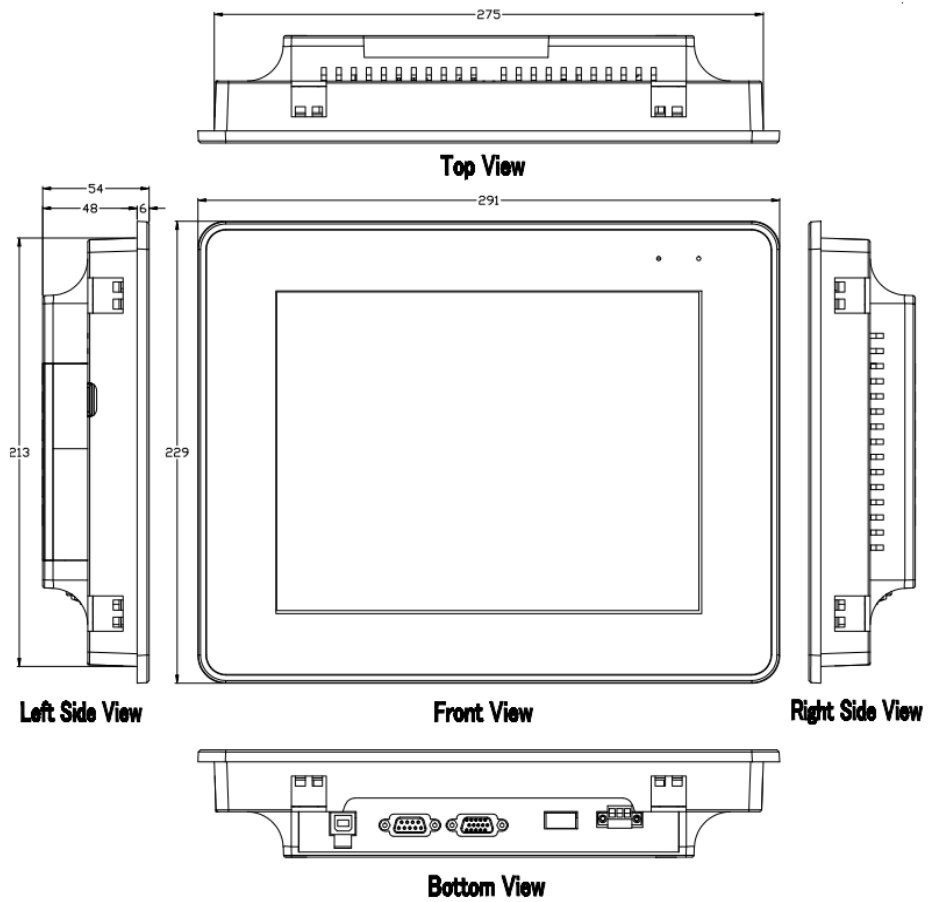


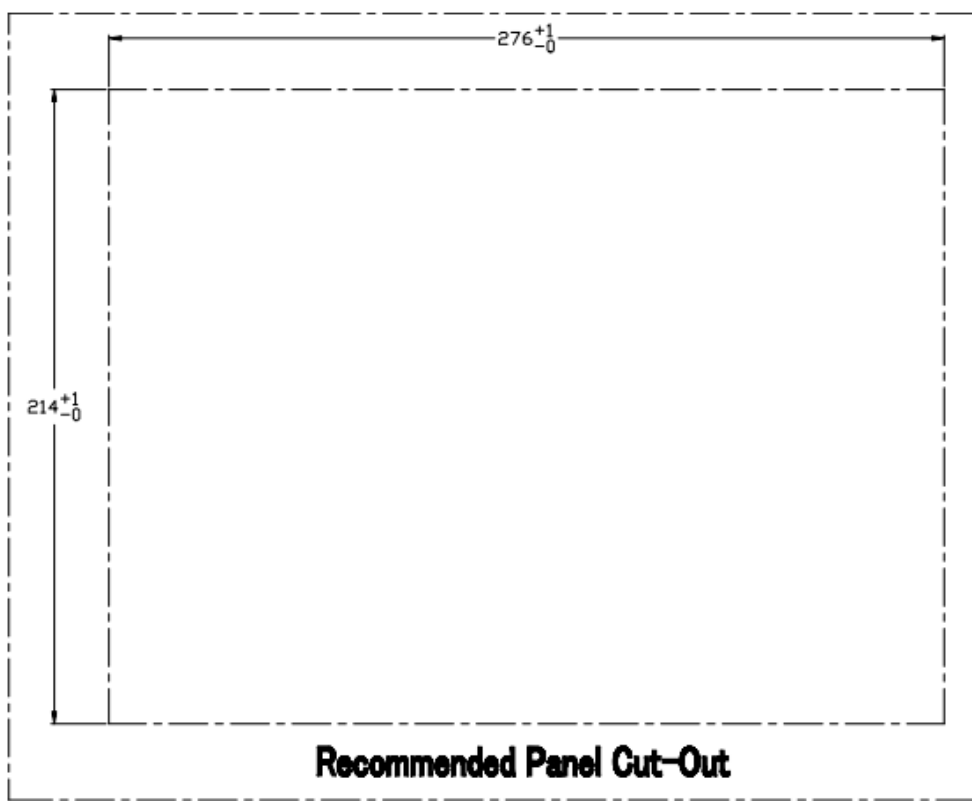
Top View



**Recommended Panel Cut-Out**

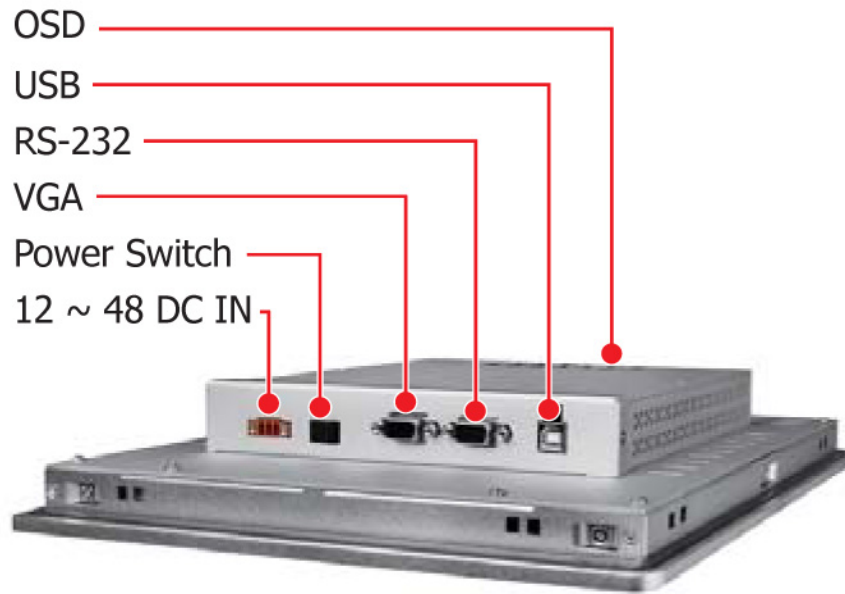
# TP-4100



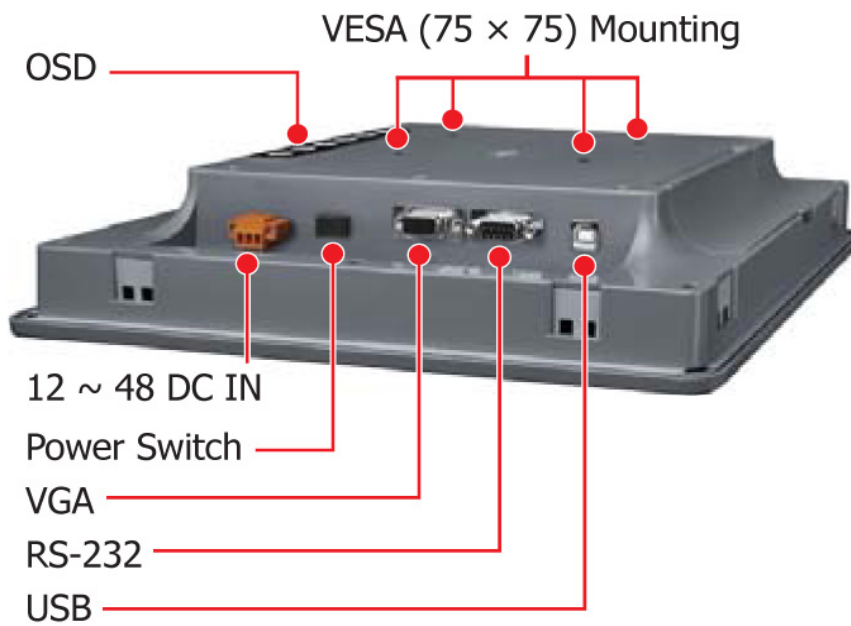


# 1.4. I/O interfaces

## TPM-4100

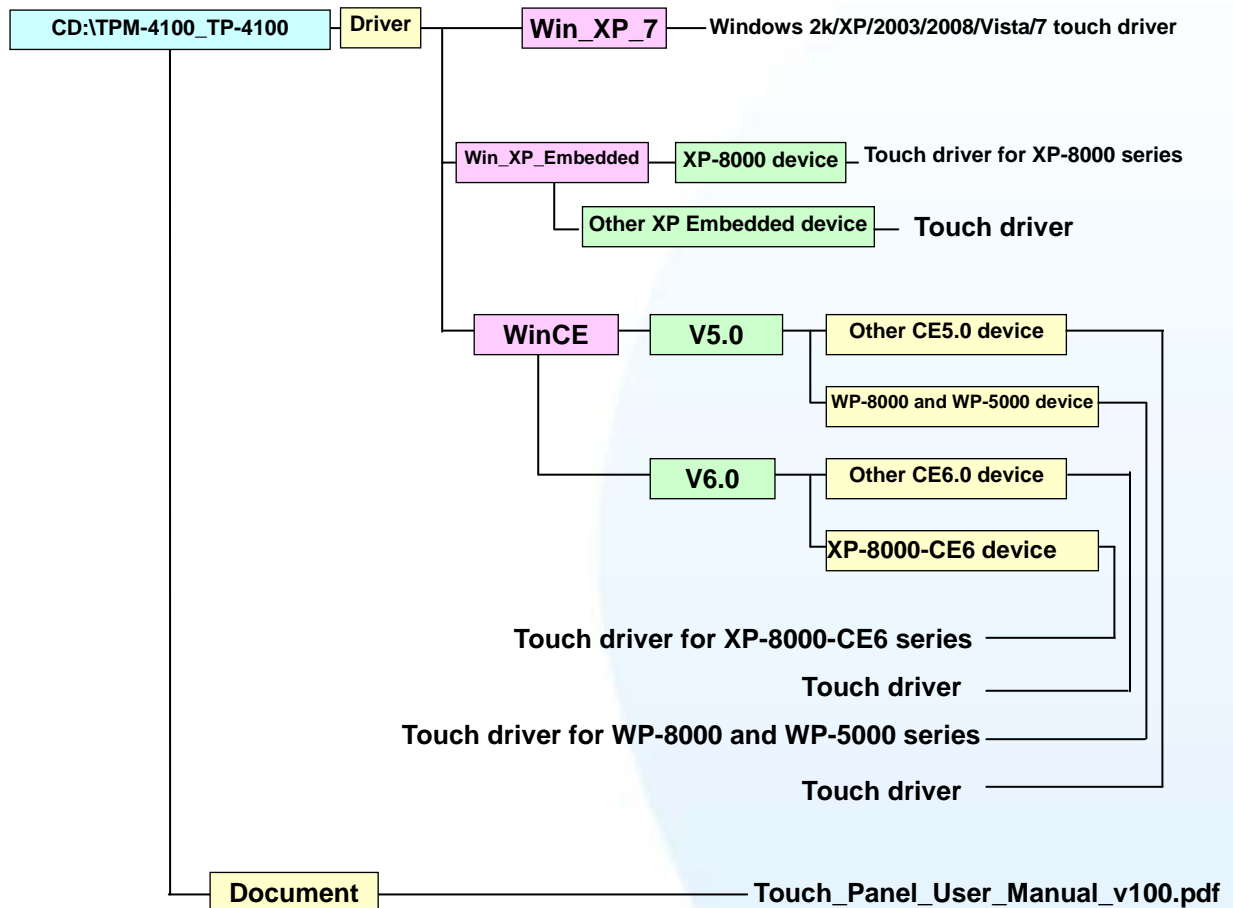


## TP-4100



# 1.5. Companion CD

This package comes with a CD that provides a collection of the documentation and drivers. All of them are listed below.

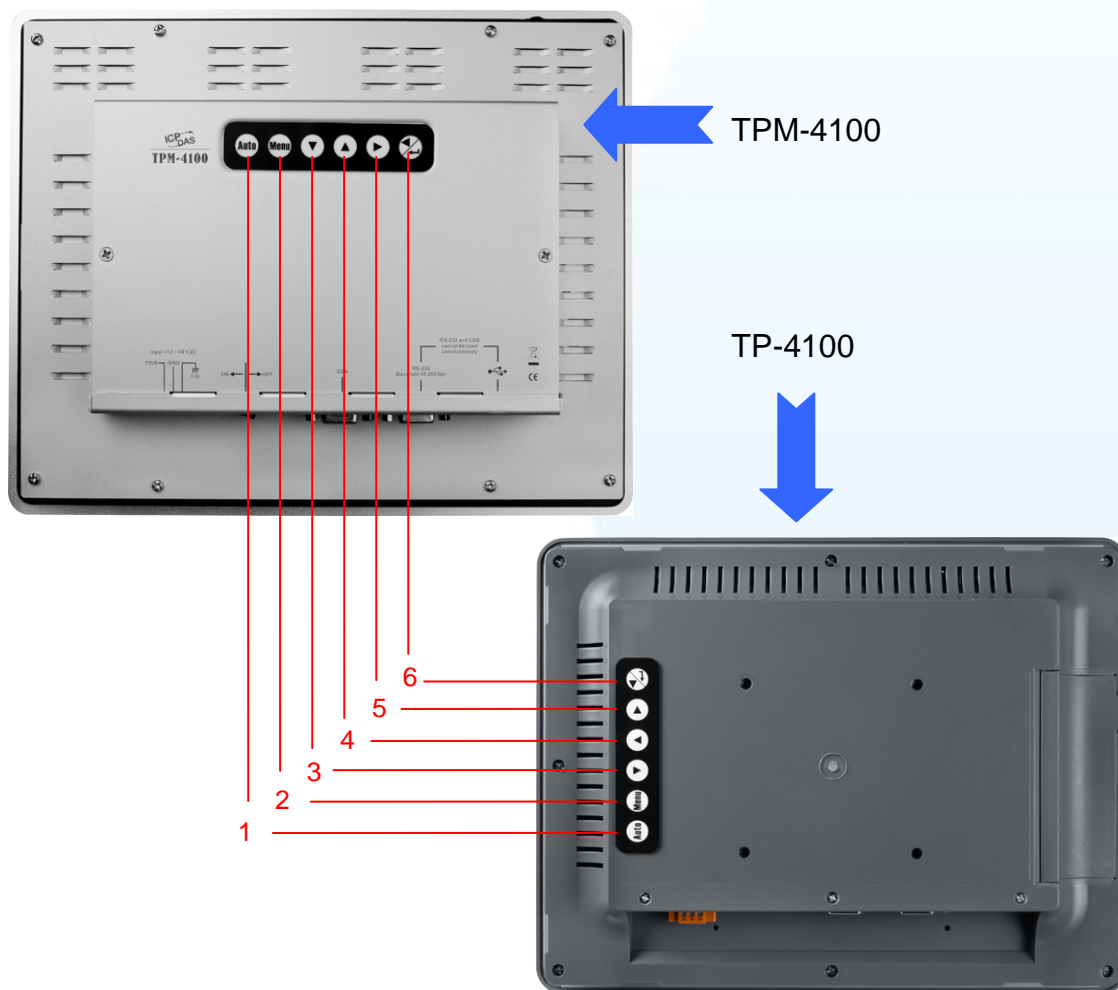






# 1.6. System Setup



This section details the systems adjustment and how to mount.

## 1.6.1. System Configuration


### Front Panel Controls



Control	Function
1 	Adjust V-Position,H-Position, Clock and Clock and Clock-Phase
2 	Turn on/off OSD main menu
3 	Select adjustment item
4 	Select adjustment item counter-clockwise

- 5  Decrease value of the adjustment item
- 6  1. Increase value of the adjustment item  
2. Enter the adjustment item

## OSD Menu Functions

Control	Description	
<b>Contrast</b>	Adjust monitor's contrast	
<b>Brightness</b>	Adjust monitor's brightness	
<b>Image setting</b>	Auto config	Press  to adjust automatically.
	Phase	Increase or decrease the snow noise of the image after auto adjustment is made.
	Clock	The dot clock is fine-adjusted after auto adjusts.
	H-position	Move the screen left or right
	V-position	Moves the screen up or down
<b>Color setting</b>	NATIVE	Color temperature
	9300K	Color temperature
	6500K	Color temperature
<b>OSD setting</b>	USER	Making adjustments to the R/G/B content.
	Language	Support 8 languages.
	OSD.H	Move the OSD position horizontally on the screen. When the ▲ button is pressed, the OSD control menu will move to the right side of the screen. Likewise, when the ▼ button is pressed, the OSD control menu will move to the left side.
	OSD.V	Move the OSD position vertically on the screen. When the ▲ button is pressed, the OSD control menu will move to the top side of the screen. Likewise, when the ▼ button is pressed, the OSD control menu will move to the lower side.



## Data and Power LED

---

Data and Power LED are in top right corner.



**Data LED:** When the light is green, it represents no display signal.

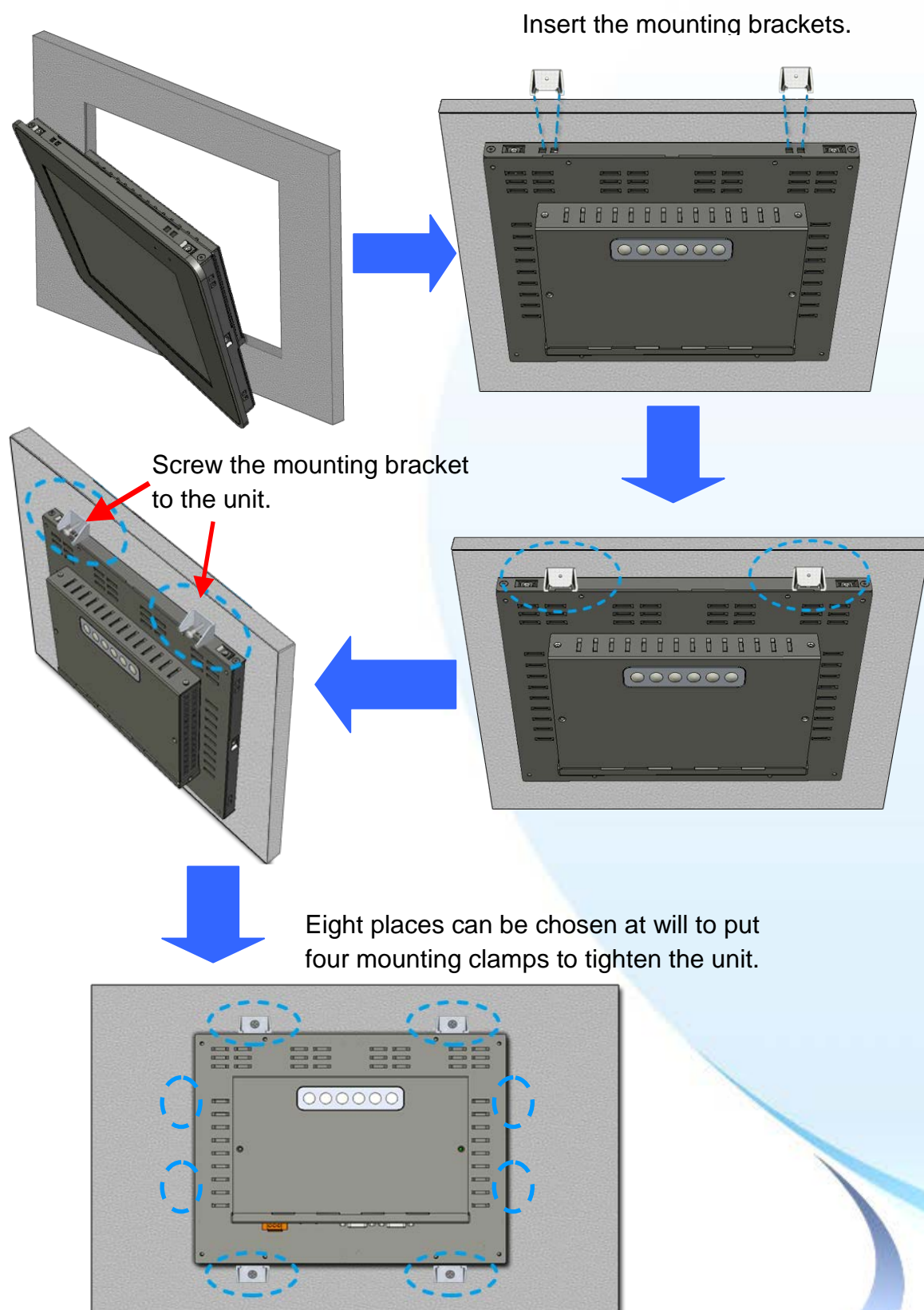
**Power LED:** When the light is red, the power is on. When the light is dark, the power is off.

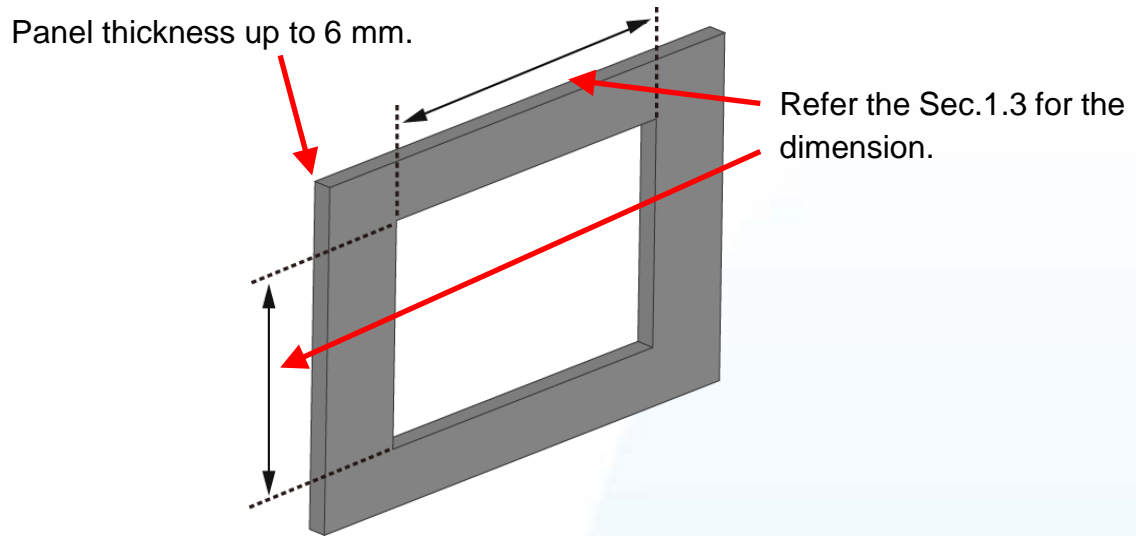
## Display mode

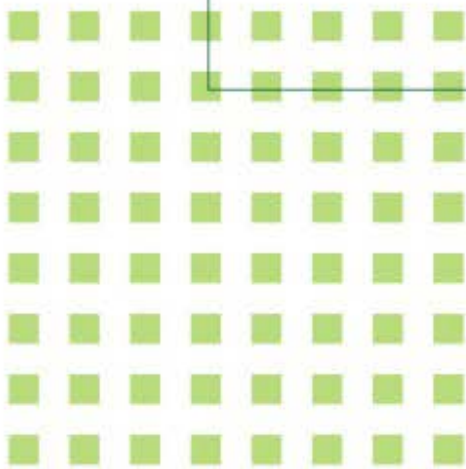
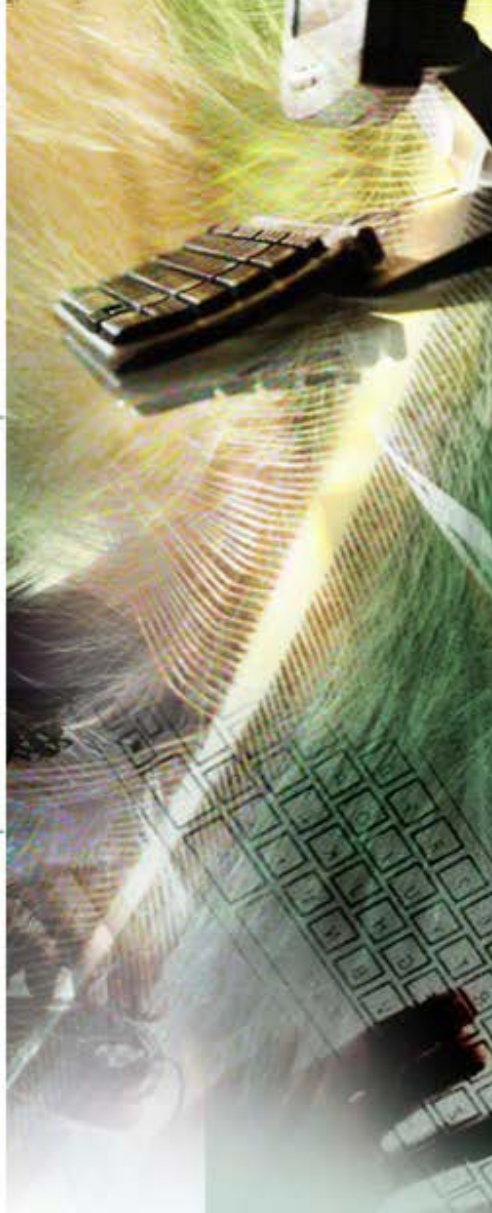
---

Resolution	Hori. Sync	Vert. Sync
640 x 480	31.4 KHz	50 Hz
	31.4 KHz	59.9 Hz
	37.5 KHz	75 Hz
720 x 400	31.4 KHz	70 Hz
800 x 600	35.1 KHz	56.2 Hz
	37.8 KHz	60.3 Hz
	46.9 KHz	75 Hz
1024 x 768	48.3 KHz	60 Hz
	56.4 KHz	70 Hz
	60.0 KHz	75 Hz

## 1.6.2. Panel Mounting







## 2. Touch Driver Installation

This chapter provides a guided tour that describes the steps needed to install, uninstall, configure for touch driver.



## 2.1. Windows CE 5.0

This section details how to install, calibrate and uninstall touch driver for WP-8000 series and WP-5000 series and where to get driver for other CE5 device.

## 2.1.1. USB Touch Driver

There are two touch drivers. One is for ICPDAS PAC controller, WP-8000 series and WP-5000 series. Another is for other Windows CE5.0 system.

WP-8000 series:

WP-8131/WP-8431/WP-8831, WP-8141/WP-8441/WP-8841

WP-8137/WP-8437/WP-8837, WP-8147/WP-8447/WP-8847

WP-8139/WP-8431/WP-8839, WP-8141/WP-8441/WP-8849

WP-8136/WP-8431/WP-8836, WP-8141/WP-8441/WP-8846

WP-5000 series:

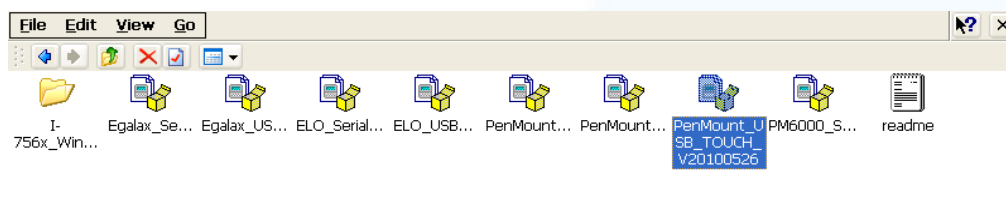
WP-5141/WP-5441-OD/WP-5149/WP-5449-OD/ WP-5147/WP-5447-OD/

WP-5146/WP-5446-OD

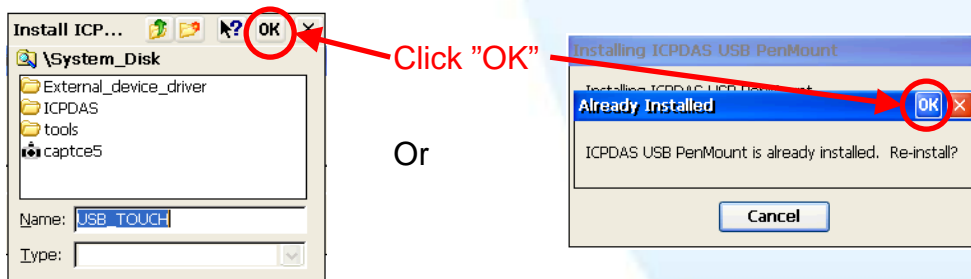
## 2.1.1.1. Installation for WinPAC-8000 and WinPAC-5000

Follow the steps below to install the PenMount USB touch driver.

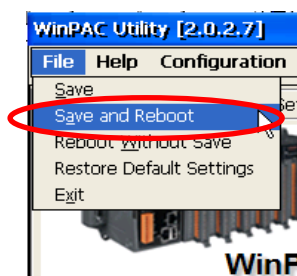
1. Go to CD-ROM to copy the driver to WinPAC.  
PenMount\_USB\_TOUCH\_Vyyyyymmdd.CAB driver can be obtained from:  
CD:\TPM-4100\_TP-4100\Driver\WinCE\V5.0\WP-8000 and WP-5000 device\  
Or go to “\System\_Disk\External\_device\_driver\” in the WinPAC.
2. Double click “PenMount\_USB\_TOUCH\_Vyyyyymmdd.CAB”



3. Show one of two dialogs below. Just click “OK” button to continue installation.



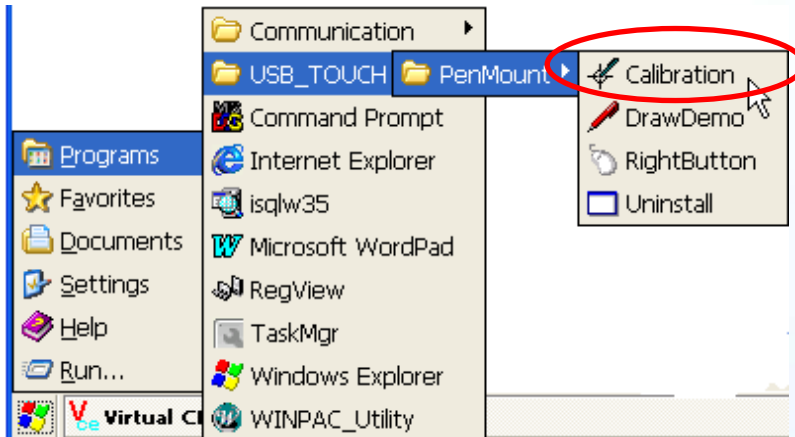
4. Run the WinPAC Utility located on desktop. And click “Save and reboot” the WinPAC.



## 2.1.1.2. Configuring for WinPAC-8000 and WinPAC-5000

### Calibration

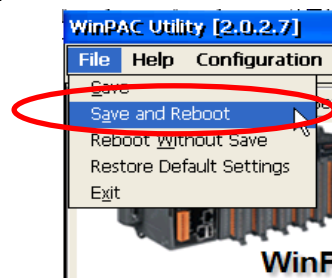
1. Start→Programs→USB\_TOUCH→PenMount→Calibration



2. Start to Calibrate.



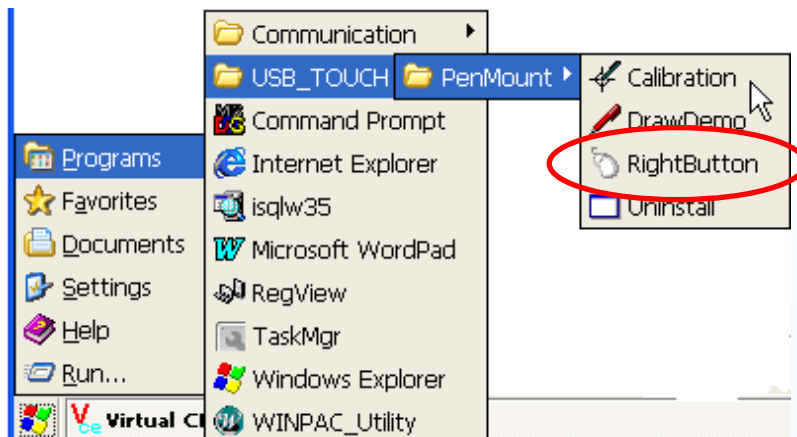
3. Run the WinPAC Utility located on desktop. And click "Save and reboot" the WinPAC.



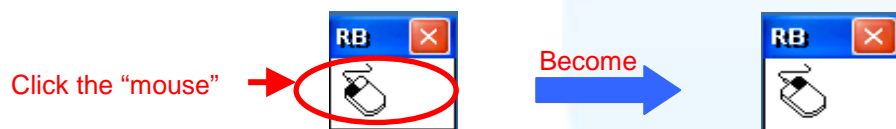


## Simulating right mouse button

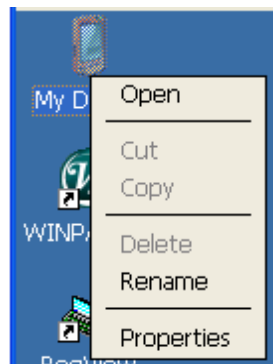
1. Start→Programs→USB\_TOUCH→PenMount→RightButton



2. Show a screen below (Left picture)→ Click the “mouse” → Turn into right picture.



3. **Click any object:** Click “My device” to test if the function of “RightButton” works. If the screen below shows, the function of “RightButton” works.

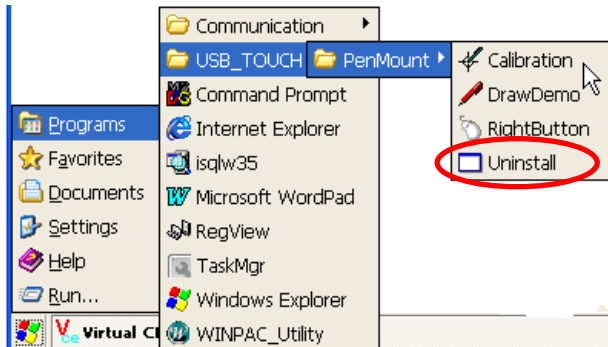


4. You can simulate the operation of right mouse button to repeat step2 and step3 for any object.

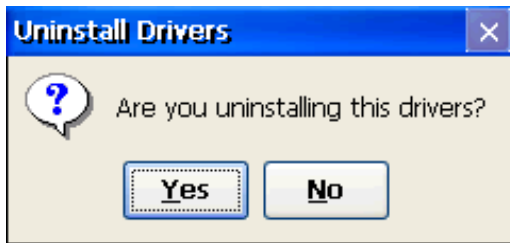
### 2.1.1.3. Uninstall for WinPAC-8000 and WinPAC-5000

Follow the steps below to uninstall the PenMount USB touch driver.

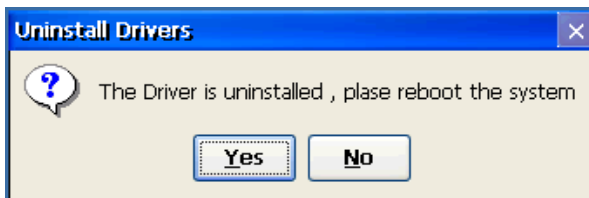
1. Start→Programs→USB\_TOUCH→PenMount→Uninstall



2. Click “Yes” button to uninstall this drivers.



3. Wait 18 seconds for uninstalling this driver and will show this dialog below. Click “Yes” button to reboot WinPAC after 5 seconds.



#### **2.1.1.4. Other Windows CE5.0 Device**

The driver can be obtained from:

CD:\TPM-4100\_TP-4100\Driver\WinCE\V5.0\Other CE5.0 device\

or go to penmount website to download driver.

PenMount website: [http://www.penmount.com/down\\_2\\_1.php](http://www.penmount.com/down_2_1.php)

## 2.1.2. Serial Touch Driver

There are two touch drivers. One is for ICPDAS PAC controller, WP-8000 series and WP-5000 series. Another is for other Windows CE5.0 system.

WP-8000 series:

WP-8131/WP-8431/WP-8831, WP-8141/WP-8441/WP-8841

WP-8137/WP-8437/WP-8837, WP-8147/WP-8447/WP-8847

WP-8139/WP-8431/WP-8839, WP-8141/WP-8441/WP-8849

WP-8136/WP-8431/WP-8836, WP-8141/WP-8441/WP-8846

WP-5000 series:

WP-5141/WP-5441-OD/WP-5149/WP-5449-OD/ WP-5147/WP-5447-OD/

WP-5146/WP-5446-OD

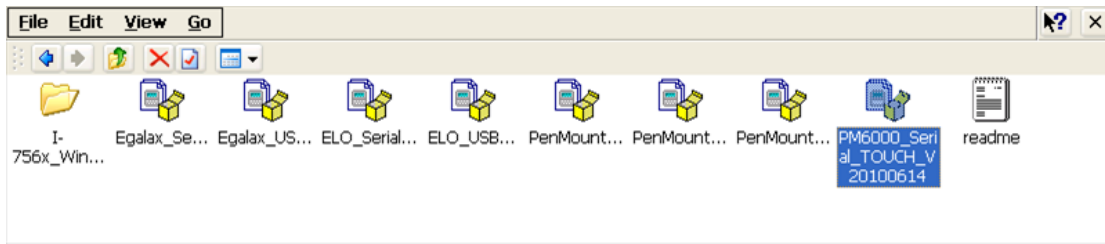
## 2.1.2.1. Installation for WinPAC-8000 and WinPAC-5000

Follow the steps below to install the PenMount serial touch driver. **The default COM port is COM4 for serial touch driver.**

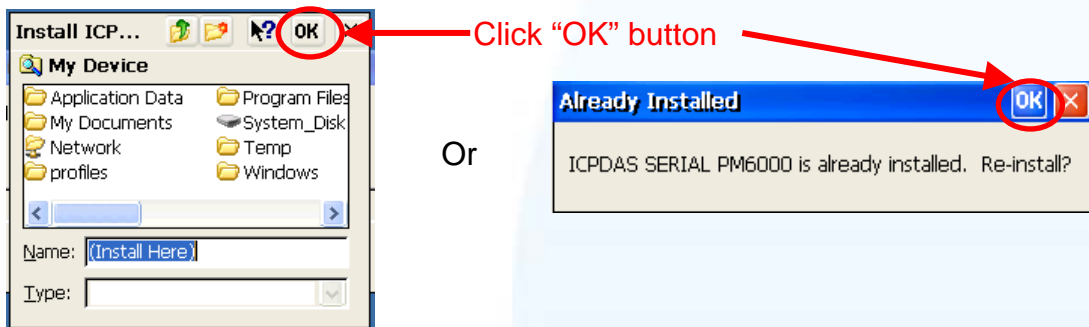


**WinPAC-5000 doesn't have COM4, please refer to "Change the COM port" of Sec.2.1.2.2 to change COM port to specified COM port.**

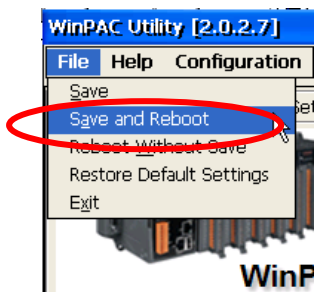
1. Go to CD-ROM to copy the driver to WinPAC.  
PM6000\_Serial\_TOUCH\_Vyyyymmdd.CAB driver can be obtained from:  
CD:\TPM-4100\_TP-4100\Driver\WinCE\V5.0\WP-8000 and WP-5000 device\  
Or go to "\System\_Disk\External\_device\_driver" in the WinPAC.
2. Double click "PM6000\_Serial\_TOUCH\_Vyyyymmdd.CAB"



3. Show one of two dialogs below. Just click “OK” button to continue installation.



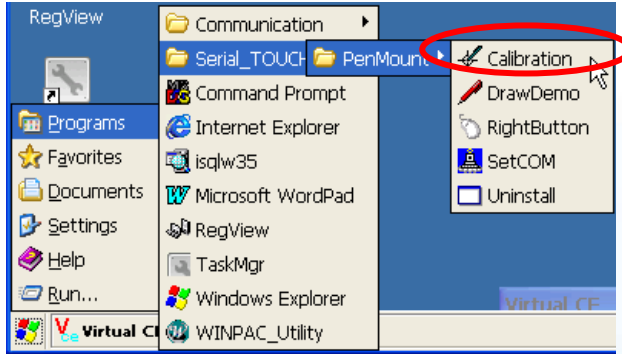
4. Run the WinPAC Utility located on desktop. And click “Save and reboot” the WinPAC.



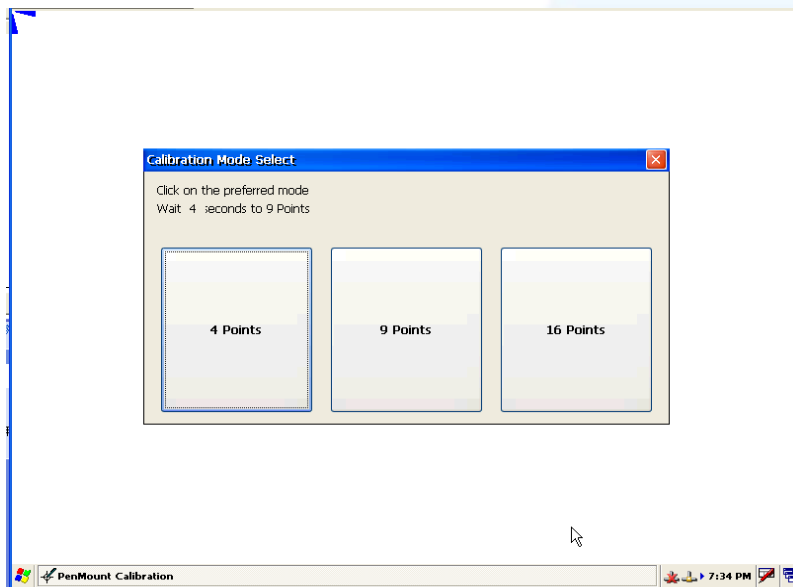
## 2.1.2.2. Configuring for WinPAC-8000 and WinPAC-5000

### Calibration

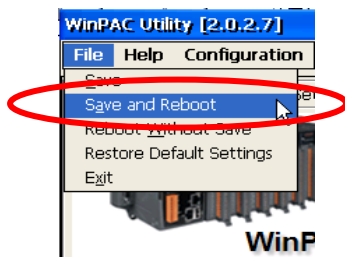
1. Start→Programs→Serial\_TOUCH→PenMount→Calibration



2. Start to Calibrate.

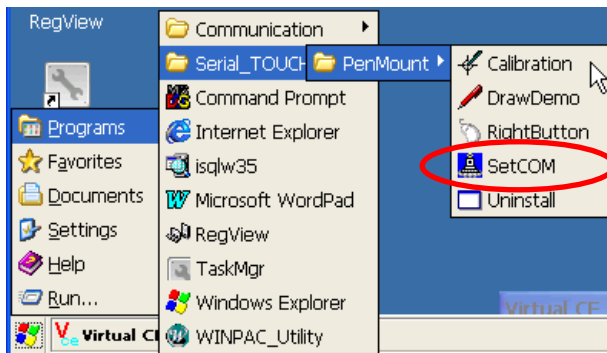


3. Run the WinPAC Utility located on desktop. And click “Save and reboot” the WinPAC.

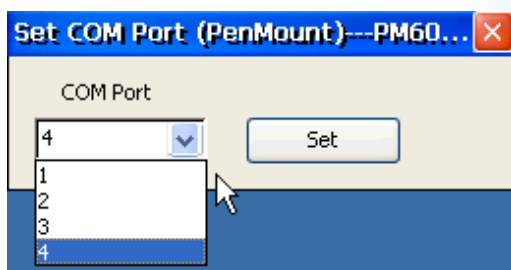


## Change the COM port

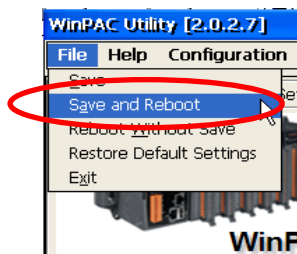
1. Start→Programs→Serial\_TOUCH→PenMount→SetCOM



2. Choose the COM port and click “Set” button.



3. Run the WinPAC Utility located on desktop. And click “Save and reboot” the WinPAC.



4. Move the com port cable to the specified com port.

## Simulating right mouse button

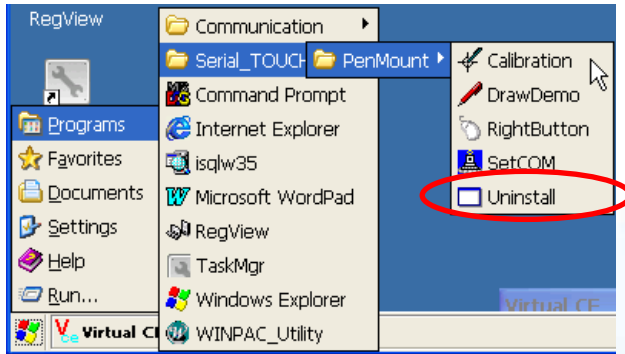
Please refer to “Simulating right mouse button” in [Sec.2.1.1.2](#)



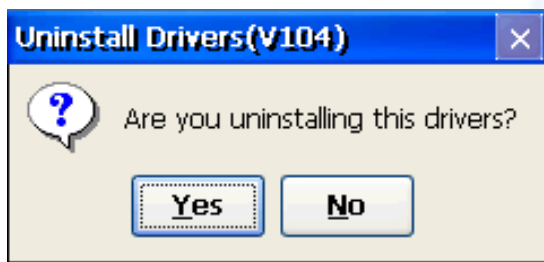
### 2.1.2.3. Uninstall for WinPAC-8000 and WinPAC-5000

Follow the steps below to uninstall the PenMount serial touch driver.

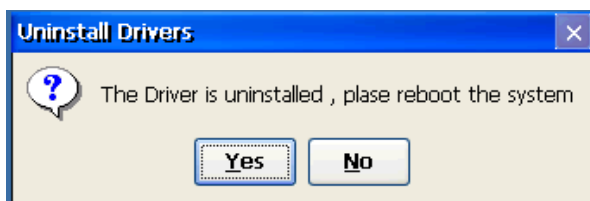
1. Start→Programs→Serial\_TOUCH→PenMount→Uninstall



2. Click “Yes” button to uninstall this driver.



3. Wait 18 seconds for uninstalling this driver and will show this dialog below. Click “Yes” button to reboot WinPAC after 5 seconds.



## 2.1.2.4. Other Windows CE5.0 Device

The driver can be obtained from:

CD:\TPM-4100\_TP-4100\Driver\WinCE\V5.0\Other CE5.0 device\

or go to penmount website to download driver.

PenMount website: [http://www.penmount.com/down\\_2\\_1.php](http://www.penmount.com/down_2_1.php)

## 2.2. Windows CE 6.0

This section details how to install, calibrate and uninstall touch driver for XP-8000-CE6 series and where to get driver for other CE6 device.

## 2.2.1. USB Touch Driver

There are two touch drivers. One is for ICPDAS PAC controller, XP-8000-CE6 series. Another is for other Windows CE6.0 system.

XP-8000-CE6 series:

### 1.Using ATOM CPU

XP-8141-Atom-CE6/ XP-8341-Atom-CE6/ XP-8741-Atom-CE6

XP-8147-Atom-CE6/ XP-8347-Atom-CE6/ XP-8747-Atom-CE6

XP-8149-Atom-CE6/ XP-8349-Atom-CE6/ XP-8749-Atom-CE6

### 2.Using LX800 CPU

XP-8041-CE6/ XP-8341-CE6/ XP-8741-CE6

XP-8047-CE6/ XP-8347-CE6/ XP-8747-CE6

XP-8049-CE6/ XP-8349-CE6/ XP-8749-CE6

XP-8046-CE6/ XP-8346-CE6/ XP-8746-CE6

## 2.2.1.1. Installation for XP-8000-CE6

Follow the steps below to install the PenMount USB touch driver.

1. Go to CD-ROM to copy the driver to XP-8000-CE6.

PenMount\_USB\_TOUCH\_Vxx\_yyyymmdd\_XPAC\_CE6.CAB can be obtained from: CD:\TPM-4100\_TP-4100\Driver\WinCE\V6.0\XP-8000-CE6 device\

Or go to “\System\_Disk\External\_device\_driver” in the XP-8000-CE6.

2. Double click “PenMount\_USB\_TOUCH\_Vxx\_yyyymmdd\_XPAC\_CE6.CAB”.

### Tips & Warnings

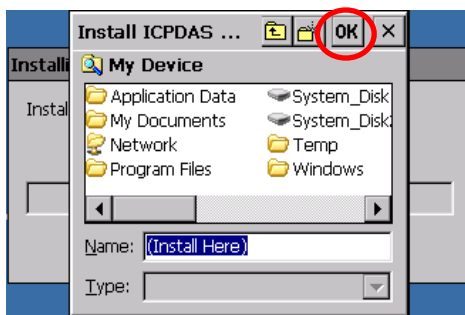


The driver (\*.cab) just could be run once. When the second time you run it, it will show a dialog below and the message is like “.....is not a valid windows CE Setup file”.



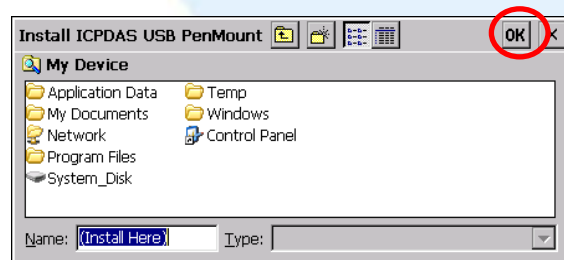
3. Click “OK” button to continue installation.

Using ATOM CPU

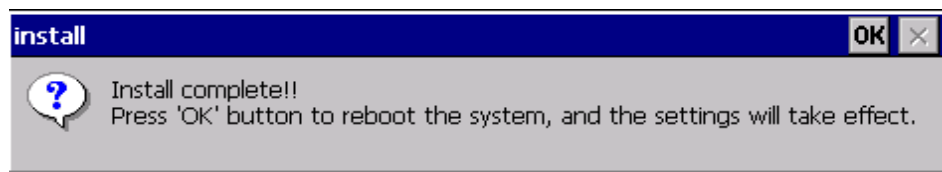


Using LX800 CPU

Or



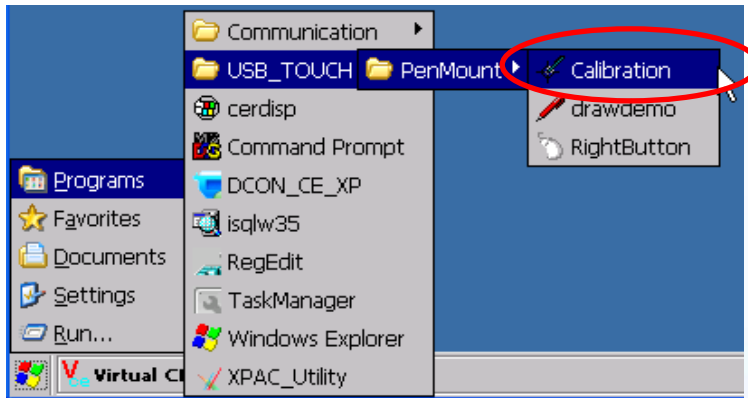
4. Click “OK” button to reboot XP-8000-CE6.



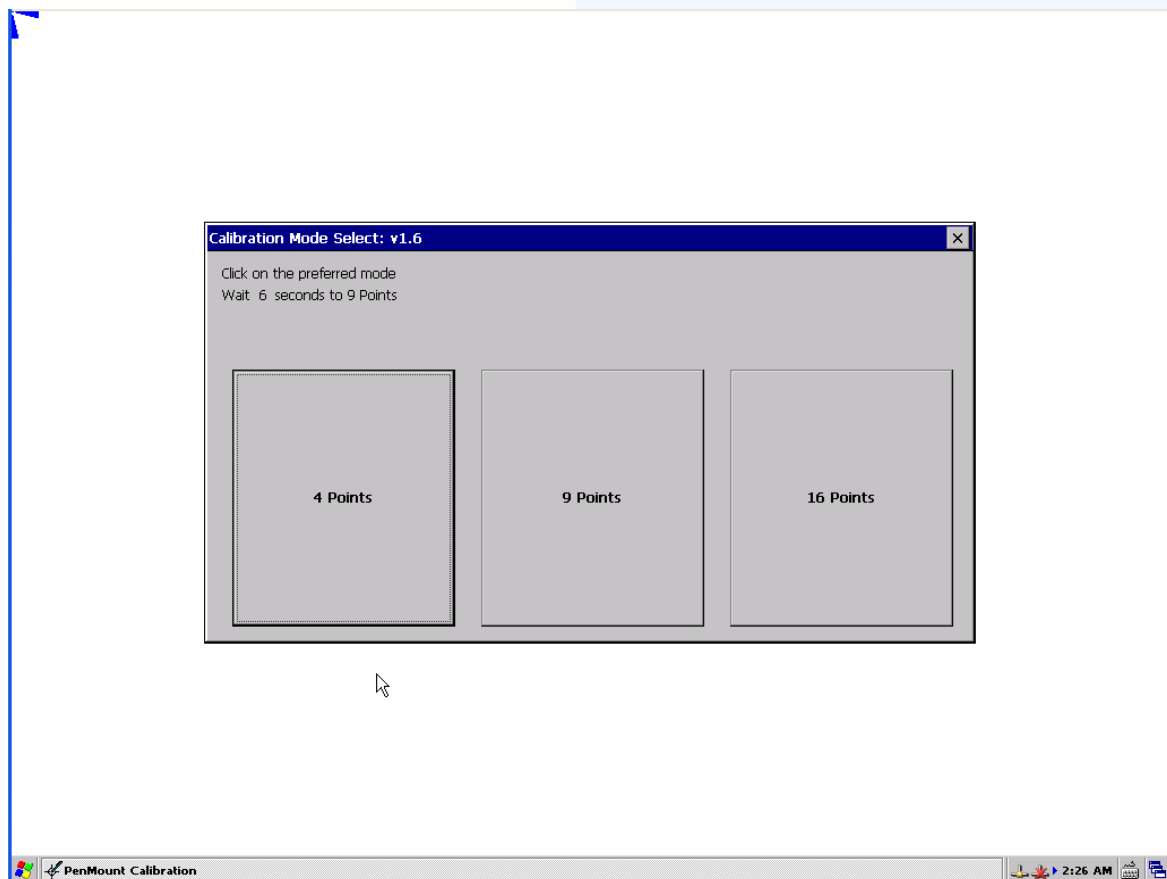
## 2.2.1.2. Configuring for XP-8000-CE6

### Calibration

1. Start→Programs→USB\_TOUCH→PenMount→Calibration



2. Start to Calibrate.



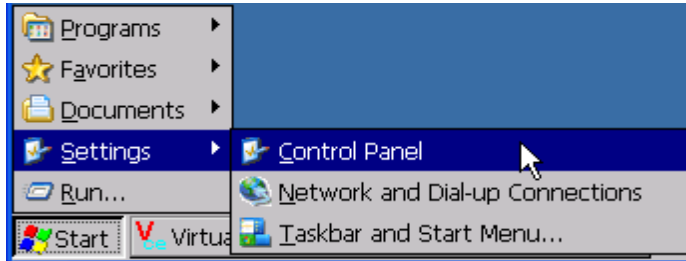
## Simulating right mouse button

Please refer to “Simulating right mouse button” in [Sec.2.1.1.2](#)

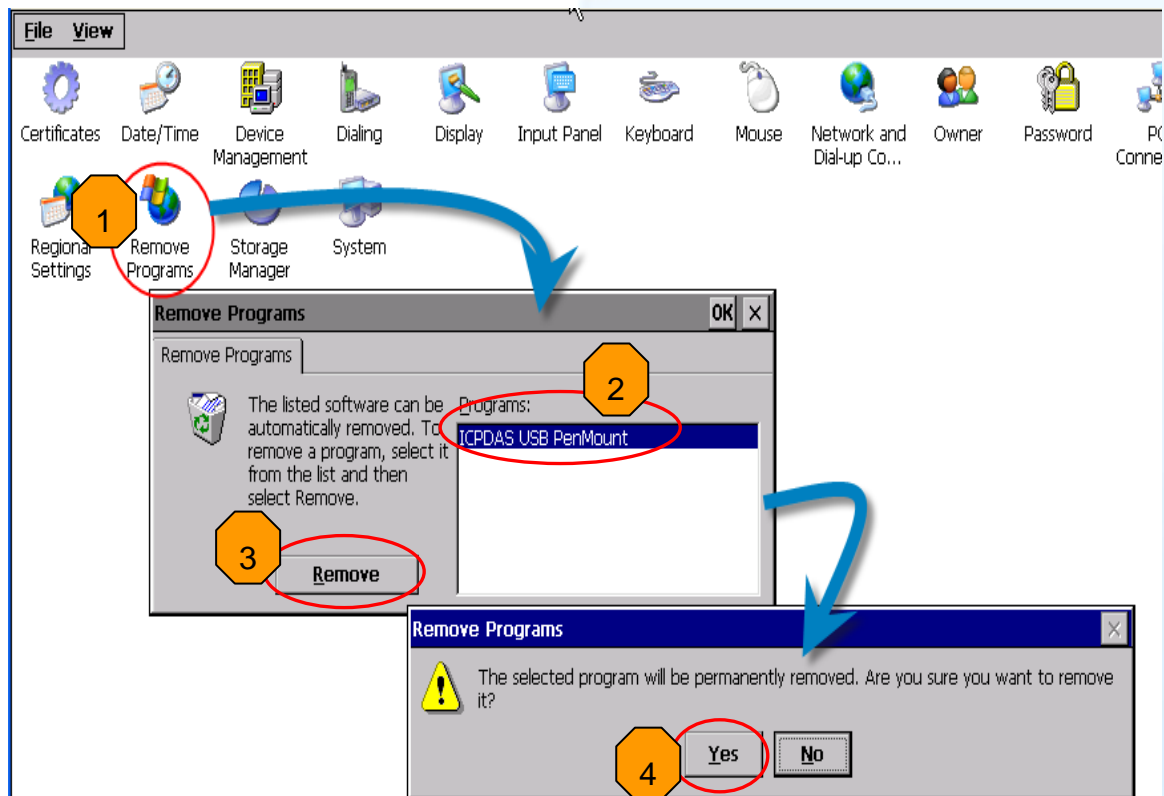
### 2.2.1.3. Uninstall for XP-8000-CE6

Follow the steps below to uninstall the PenMount USB touch driver.

1. Start→Settings→Control Panel.

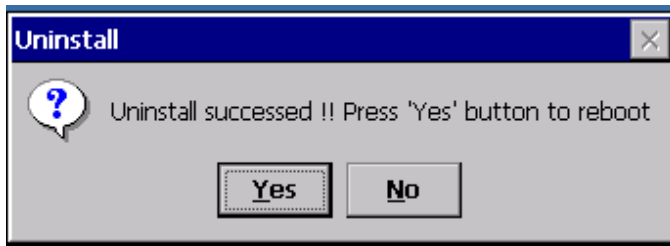


2. Remove Programs→choose "ICPDAS USB PenMount"→Click "Remove" button→Click "Yes" button.





3. Click “Yes” button.



## 2.2.1.4. Other Windows CE 6.0 Device

The driver can be obtained from:

CD:\TPM-4100\_TP-4100\Driver\WinCE\V6.0\Other CE6.0 device\

or go to penmount website to download driver.

PenMount website: [http://www.penmount.com/down\\_2\\_1.php](http://www.penmount.com/down_2_1.php)

## 2.2.2. Serial Touch Driver

There are two touch drivers. One is for ICPDAS PAC controller, XP-8000-CE6 series. Another is for other Windows CE6.0 system.

XP-8000-CE6 series:

### 1.Using ATOM CPU

XP-8141-Atom-CE6/ XP-8341-Atom-CE6/ XP-8741-Atom-CE6

XP-8147-Atom-CE6/ XP-8347-Atom-CE6/ XP-8747-Atom-CE6

XP-8149-Atom-CE6/ XP-8349-Atom-CE6/ XP-8749-Atom-CE6

### 2.Using LX800 CPU

XP-8041-CE6/ XP-8341-CE6/ XP-8741-CE6

XP-8047-CE6/ XP-8347-CE6/ XP-8747-CE6

XP-8049-CE6/ XP-8349-CE6/ XP-8749-CE6

XP-8046-CE6/ XP-8346-CE6/ XP-8746-CE6

## 2.2.2.1. Installation for XP-8000-CE6

Follow the steps below to install the PenMount Serial touch driver. **The default COM port is COM5 for touch driver.**



1. Go to CD-ROM to copy the driver to XP-8000-CE6.

PenMount\_Serial\_TOUCH\_Vxx\_yyyymmdd\_XPAC\_CE6(PM6000R).CAB can be obtained from: CD:\TPM-4100\_TP-4100\Driver\WinCE\V6.0\XP-8000-CE6 device\

Or go to “System\_Disk\External\_device\_driver” in the XP-8000-CE6.

2. Double click “PenMount\_Serial\_TOUCH\_Vxx\_yyyymmdd\_XPAC\_CE6(PM6000R).CAB”.

### Tips & Warnings

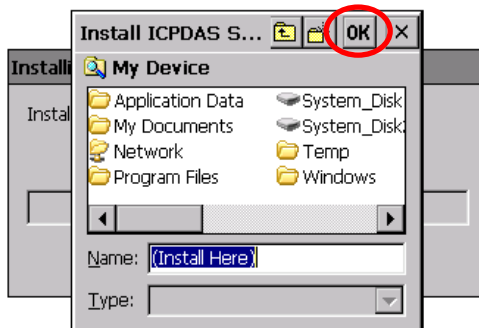


The driver (\*.cab) just could be run once. When the second time you run it, it will show a dialog below and the message is like “.....is not a valid windows CE Setup file”.



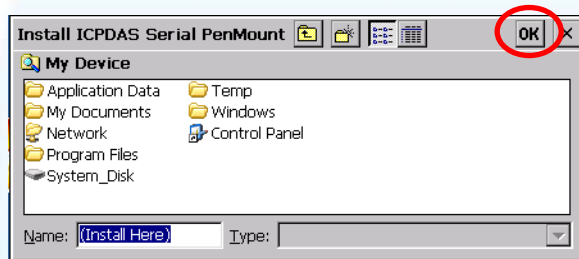
3. Click "OK" button to continue installation.

Using ATOM CPU

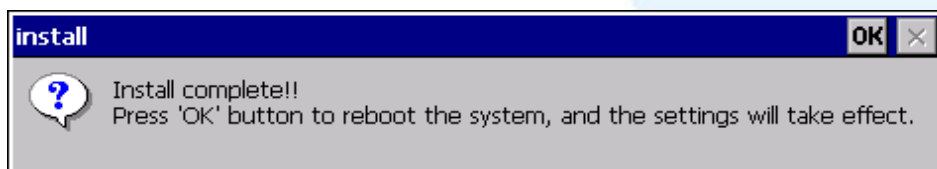


Using LX800 CPU

Or



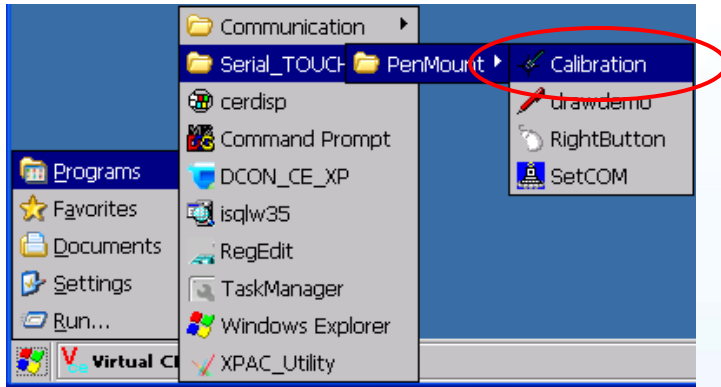
4. Click "OK" button to reboot XP-8000-CE6.



## 2.2.2.2. Configuring for XP-8000-CE6

### Calibration

1. Start→Programs→Serial\_TOUCH→PenMount→Calibration

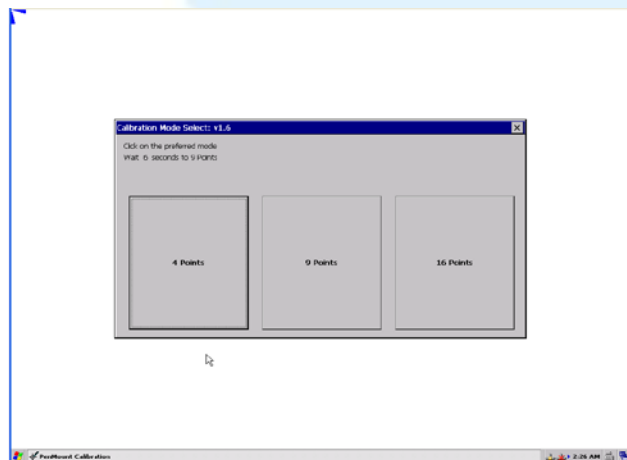


2. Start to calibrate.



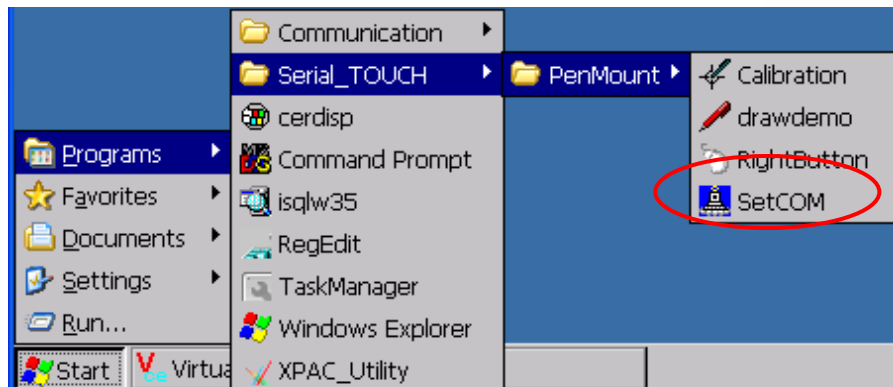
Using LX800 CPU

Using ATOM CPU

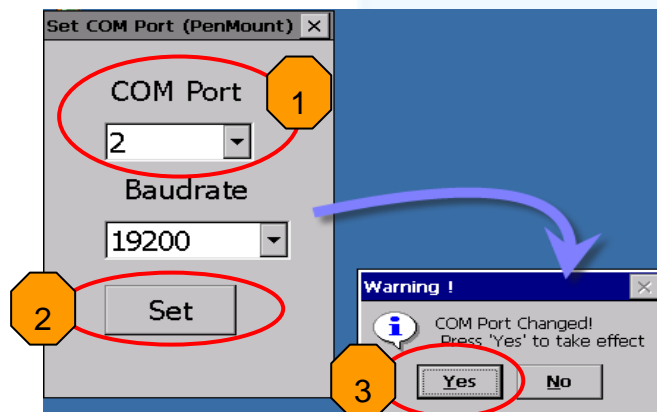


## Change the COM Port

1. Start→Programs→Serial\_TOUCH→PenMount→SetCOM



2. Just choose the COM port→Click “Set” button→Click “Yes” button to reboot the system. The baudrate for TPM-4100/TP-4100 touch monitor is 19200 bps, so please don't modify the baudrate of touch driver.



## Simulating right mouse button

Please refer to “Simulating right mouse button” in [Sec.2.1.1.2](#)

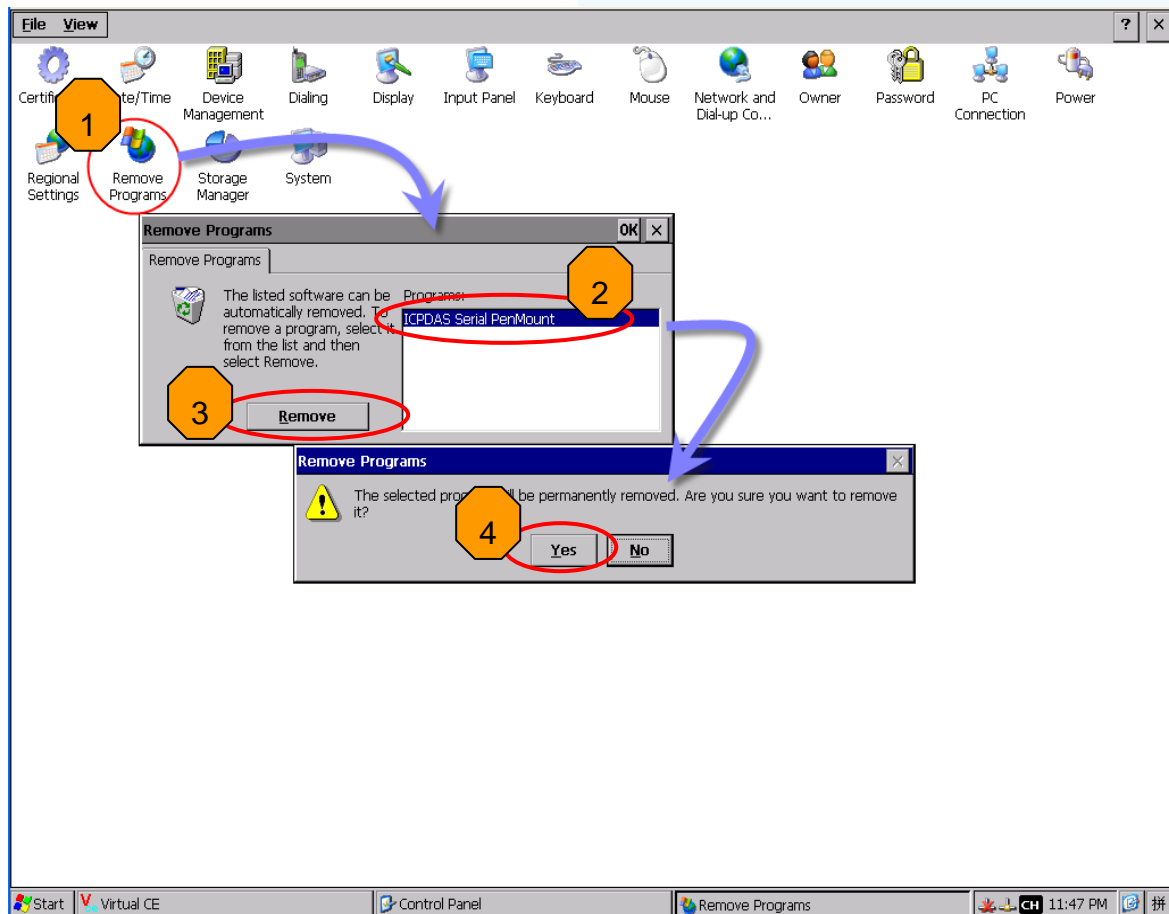
### 2.2.2.3. Uninstall for XP-8000-CE6

Follow the steps below to uninstall the PenMount serial touch driver.

1. Start→Settings→Control Panel.

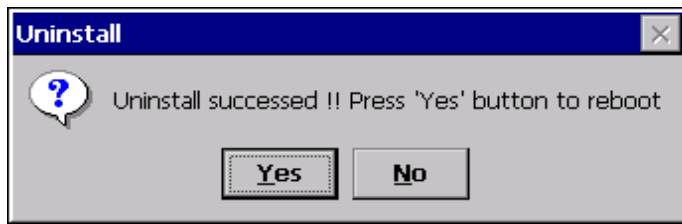


2. Remove Programs→choose "ICPDAS Serial PenMout"→Click "Remove" button→Click "Yes" button.





3. Click “Yes” button to reboot the system.



## 2.2.2.4. Other Windows CE 6.0 Device

The driver can be obtained from:

CD:\TPM-4100\_TP-4100\Driver\WinCE\V6.0\Other CE6.0 device\

or go to penmount website to download driver.

PenMount website: [http://www.penmount.com/down\\_2\\_1.php](http://www.penmount.com/down_2_1.php)

## 2.3. Windows XP Embedded

The touch driver for XP embedded is a universal driver. USB and Serial both use the same driver.

### 2.3.1. Universal Driver

There are two universal touch drivers. One is for ICPDAS PAC controller, XP-8000 series. Another is for other Windows XP embedded system.

XP-8000 series:

1. Using ATOM CPU

XP-8141-Atom/ XP-8341-Atom/ XP-8741-Atom

2. Using LX800 CPU

XP-8041/ XP-8341/ XP-8741

### 2.3.1.1. Installation for XP-8000

Follow the steps below to install the PenMount universal touch driver.

There is a **RS-232 cable in the shipping package** (Sec.1). The user can use this cable to **connect TPM-4100/TP-4100 with COM5 to use serial touch driver directly**. If the user wants to use other com port, please note the pin assignment. About the pin assignment, please refer to the user manual of the XP-8000.

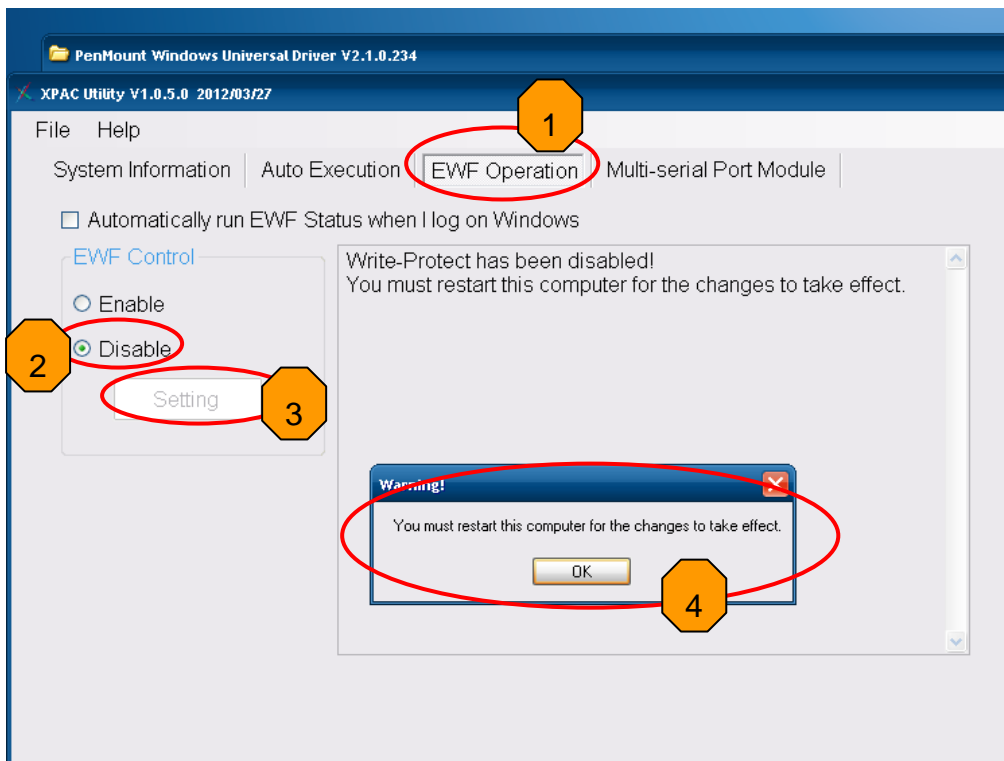


1. Go to CD-ROM to copy the driver to XP-8000.

“PenMount Windows Universal Driver Vx.x.x.x” folder can be obtained from:

CD: \TPM-4100\_TP-4100\Driver\Win\_XP\_Embedded\XP-8000 device\

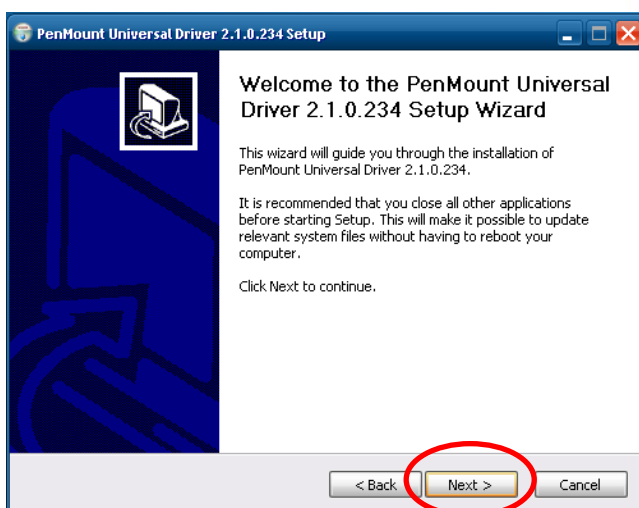
2. Executing XPAC Utility to disable EWF on desktop.



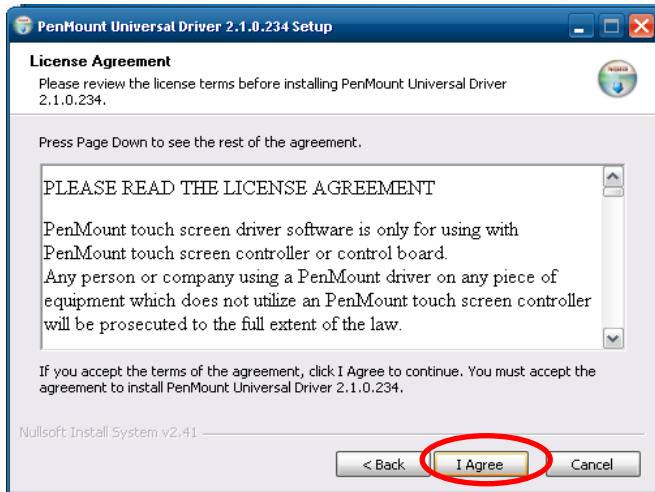
3. Double click Setup.exe in the driver's folder.



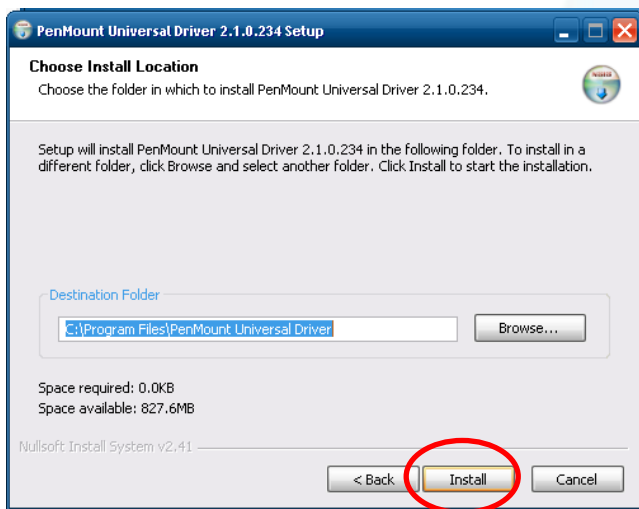
4. Click "Next" button to continue installation.



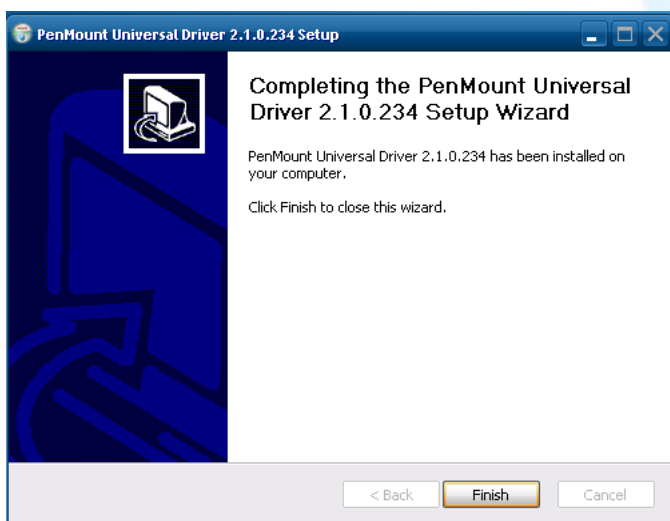
5. Click "I Agree" button.



6. Click "Install" button to install driver to destination folder.



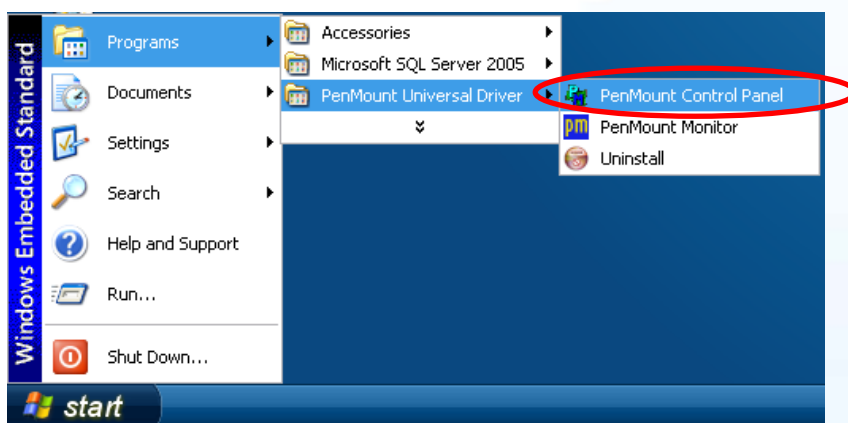
7. Click "Finish" button.



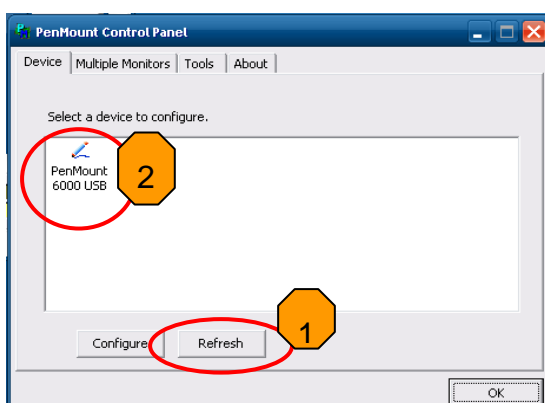
8. Restart XP-8000.
9. Connect USB or serial cable to XP-8000(USB and serial can not be used simultaneously).

If the USB or serial touch doesn't work, please follow the steps below.

- a. Start→Programs→PenMount Universal Driver→PenMount Control Panel

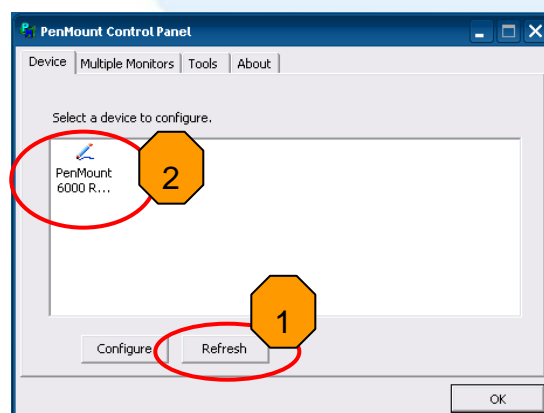


- b. "Device" tab→click "Refresh" button to search USB or serial touch screen monitor→ if search is successful, "PenMount 6000 USB" or "PenMount 6000 RS232" will show.



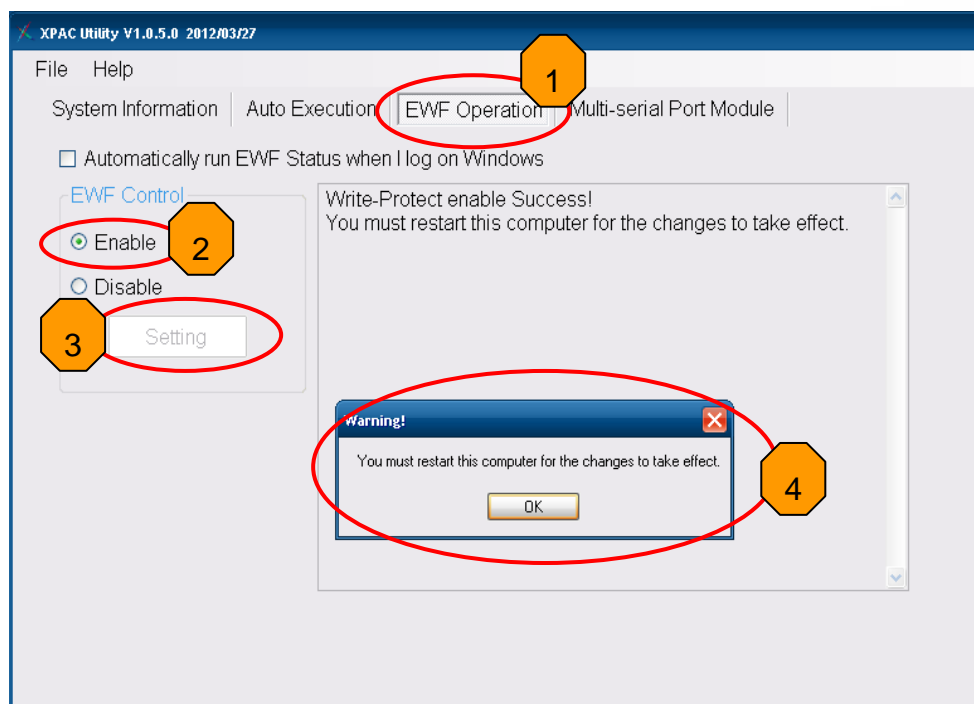
← USB touch

Serial touch →



c. USB or serial touch driver has been installed.

## 10. Executing XPAC Utility to enable EWF on desktop.



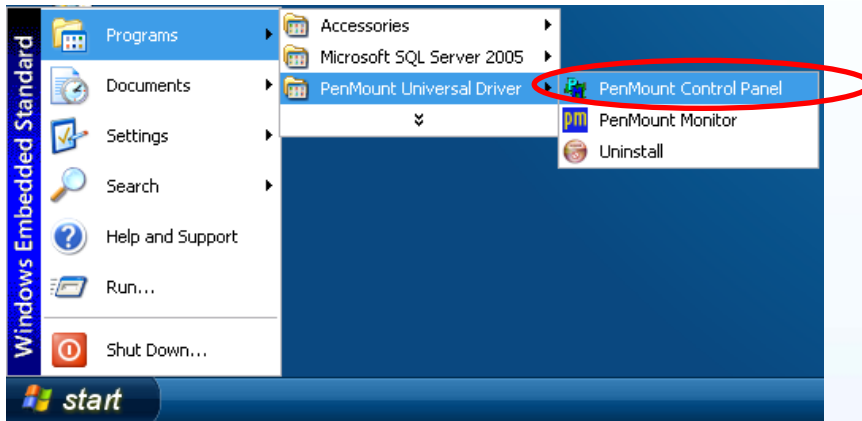
## 11. Restart XP-8000.



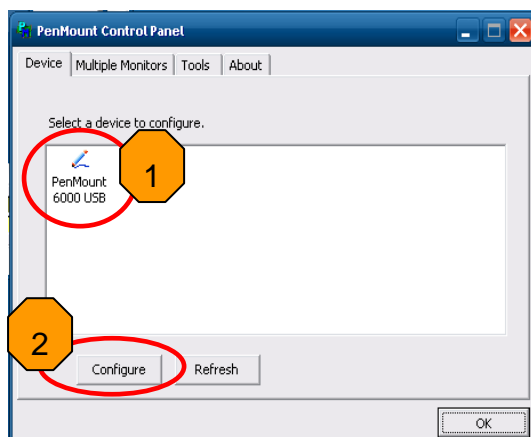
## 2.3.1.2. Configuring for XP-8000

### Calibration

12. Start→Programs→PenMount Universal Driver→PenMount Control Panel

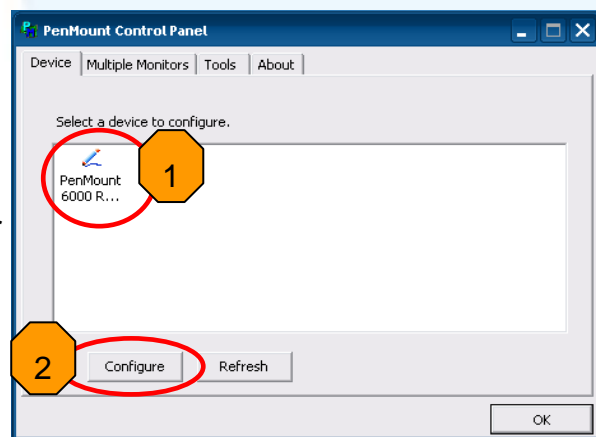


13. Check if the pattern “PenMount 6000 USB” or “PenMount 6000 RS232” shows. If yes, select a device and click “Configure” button. If no, refer to Sec.2.3.1.1.



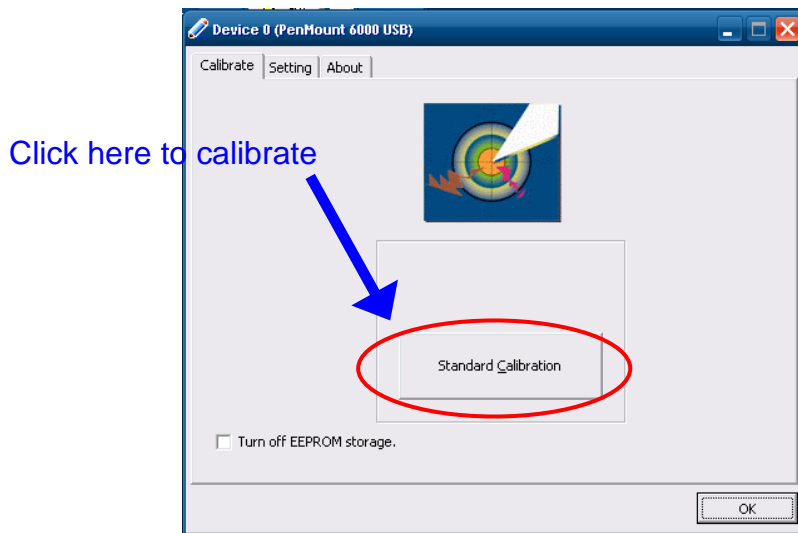
USB touch driver

Or

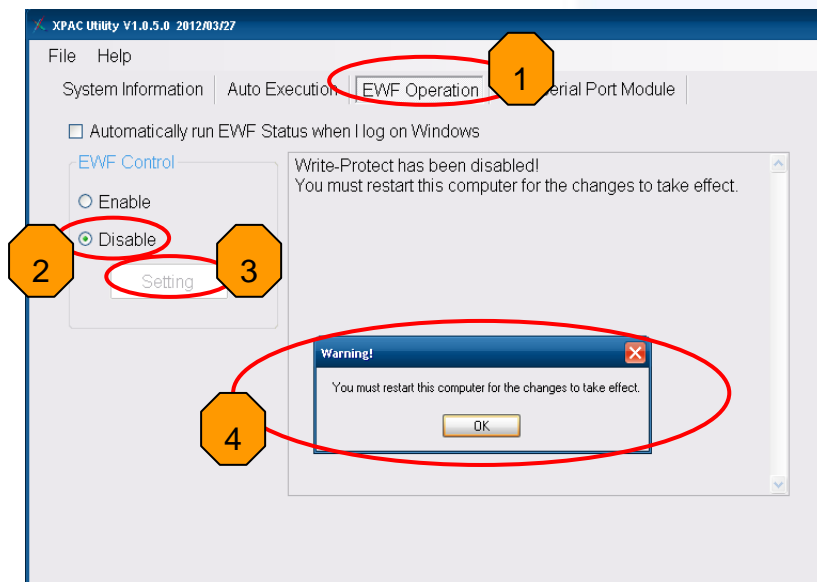


Serial touch driver

14. Click “Standard Calibration” to calibrate.

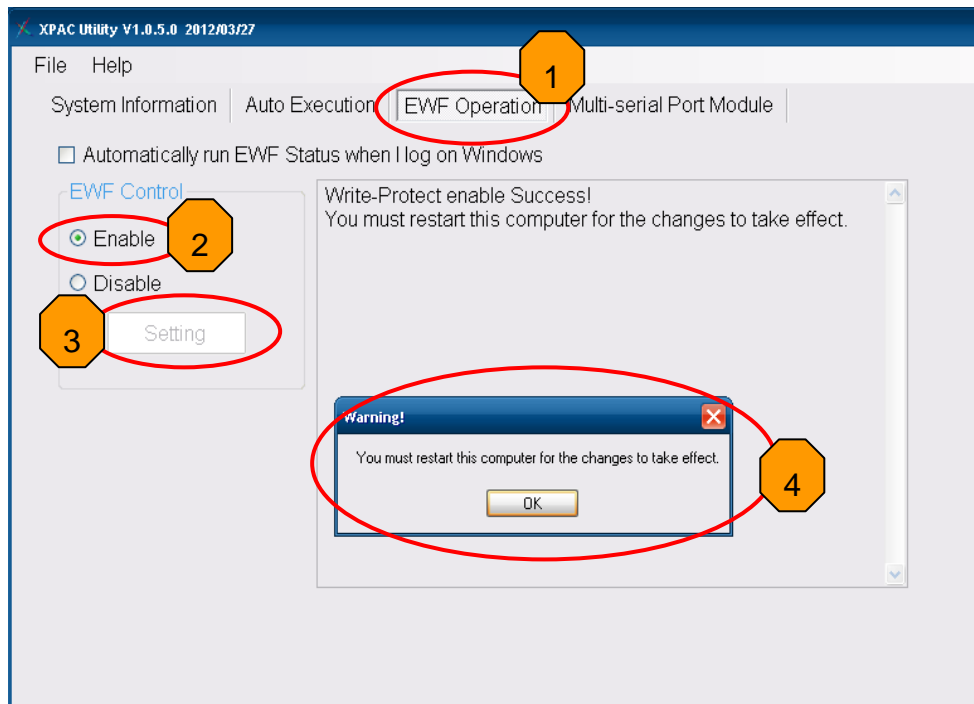


**15. Executing XPAC Utility to disable EWF to save setting on desktop.**



**16. Restart XP-8000.**

**17. Executing XPAC Utility to enable EWF on desktop.**



18. Restart to XP-8000 for the changes to take effect.

## Change the COM Port

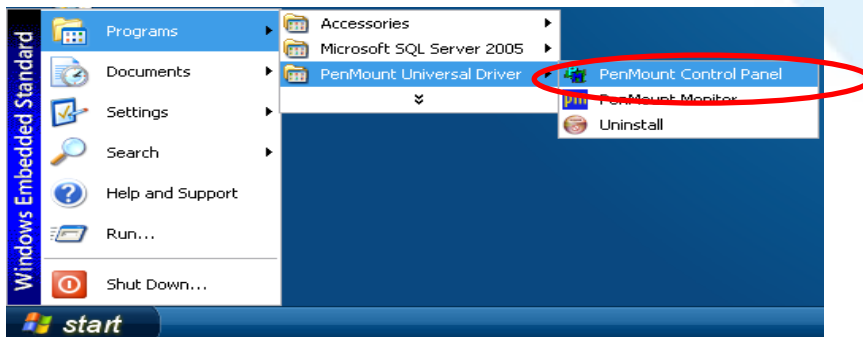
For serial touch driver

**Method1:** The touch driver will detect all com port to find what com port connects to serial touch screen monitor automatically when XP-8000 reboots every time.

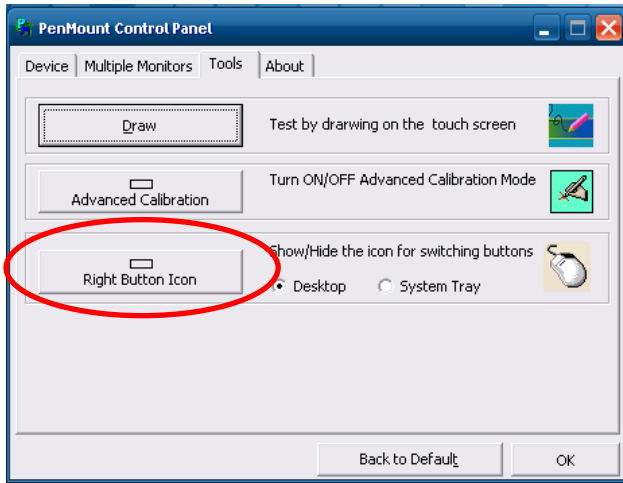
**Method2:** Please refer to Sec.2.3.1.1 →Step 9. to detect again.

## Simulating right mouse button

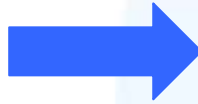
1. Start→Programs→PenMount Universal Driver→PenMount Control Panel



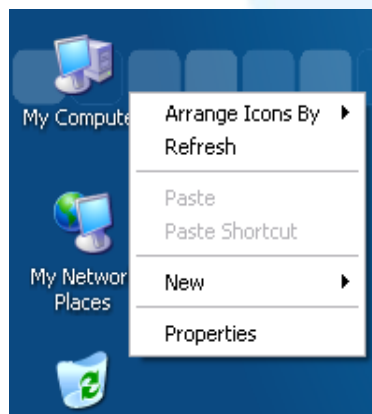
2. Click “Right Button Icon”



3. Show a screen below (Left picture) → Click the “mouse” → Turn into right picture.



4. **Click any object:** Click “My computer” to test if the “Right Button Icon” function work. If the screen below shows, the “Right Button Icon” function works.

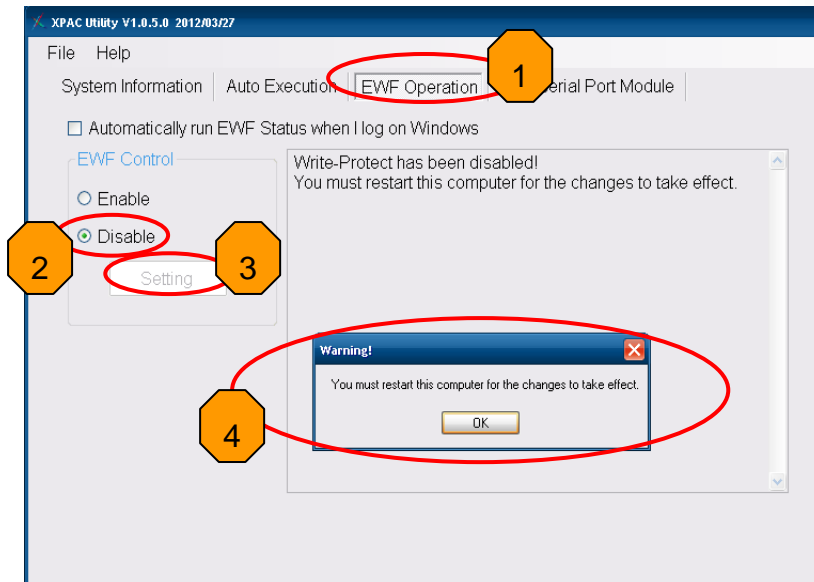


5. You can simulate the operation of right mouse button to repeat step3 and step4 for any object.

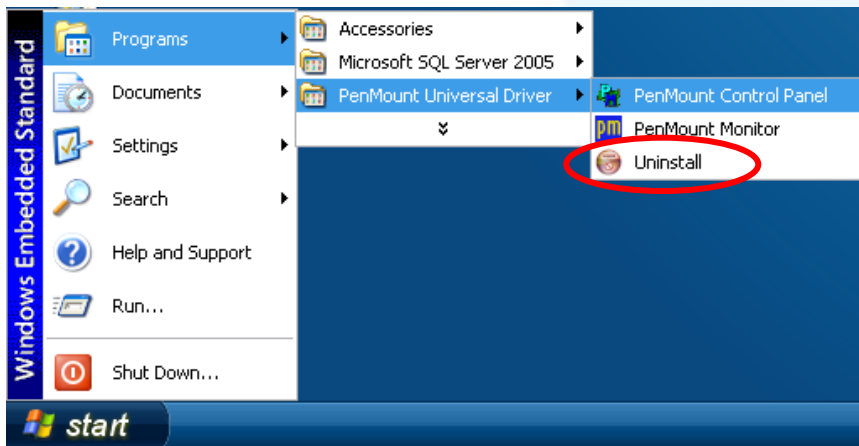
### 2.3.1.3. Uninstall for XP-8000

Follow the steps below to uninstall the PenMount universal touch driver.

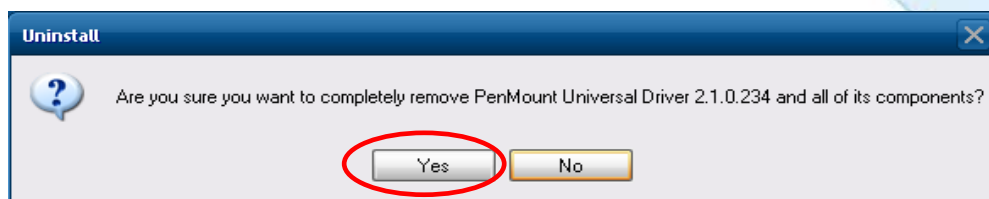
1. Executing XPAC Utility to disable EWF to start to save setting.



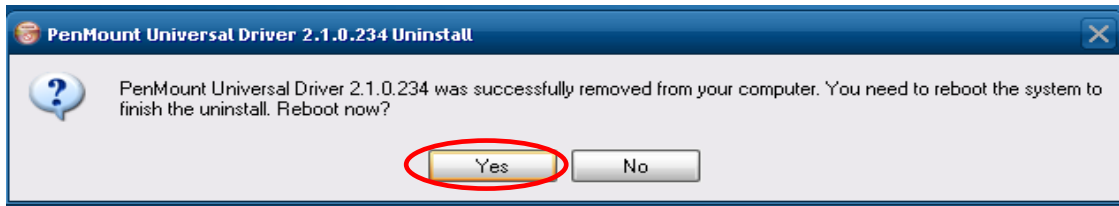
2. Start→Programs→PenMount Universal Driver→Uninstall.



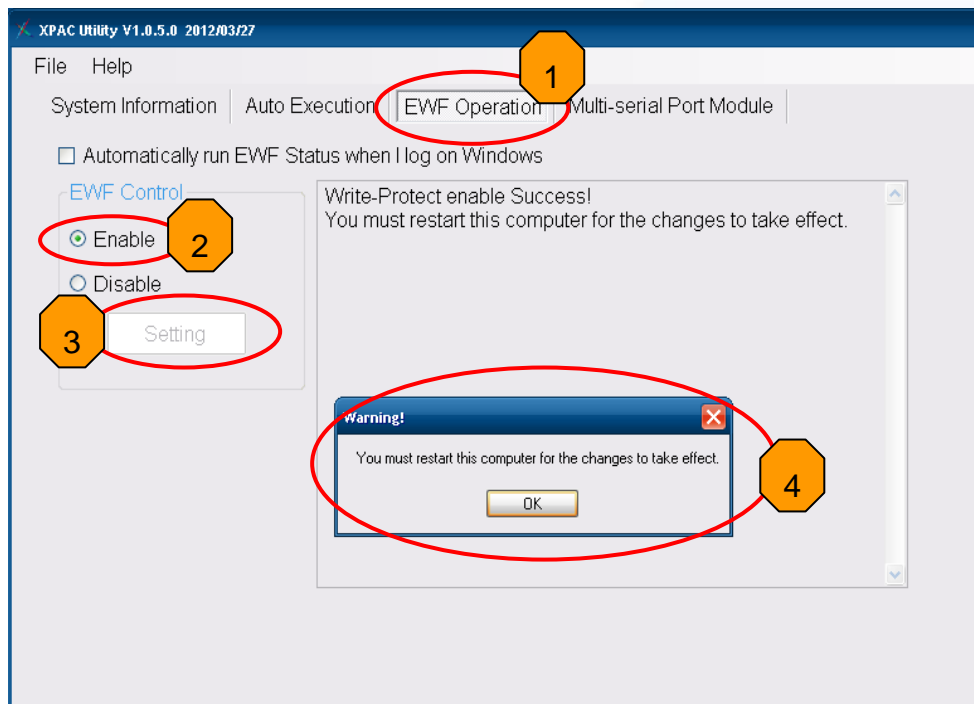
3. Click "Yes" button.



4. Click "Yes" button to reboot.



5. After reboot, executing XPAC Utility to enable EWF on desktop.



6. Restart XP-8000.

## 2.3.1.4. Other Windows XP Embedded Device

The driver can be obtained from:

CD: \TPM-4100\_TP-4100\Driver\Win\_XP\_Embedded\Other XP Embedded device\

or go to penmount website to download driver.

PenMount website: [http://www.penmount.com/down\\_2\\_1.php](http://www.penmount.com/down_2_1.php)

## 2.4. Windows XP/7

The touch driver for 2k/XP/2003/2008/Vista/7 is a universal driver. USB and Serial both use the same driver.

### 2.4.1. Universal Driver

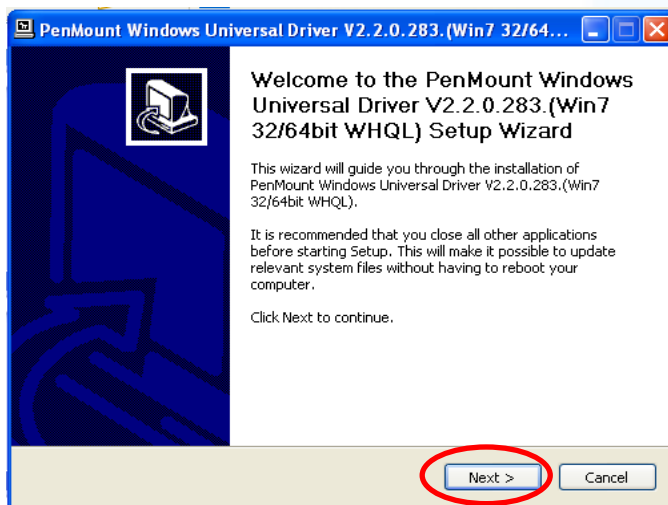
This section details how to install, calibrate and uninstall the universal driver for 2k/XP/2003/2008/Vista/7.



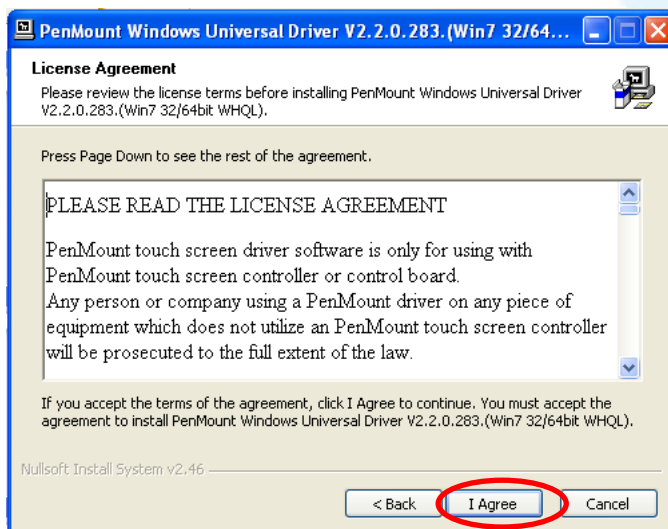
## 2.4.1.1. Installation

Follow the steps below to install the PenMount universal touch driver.

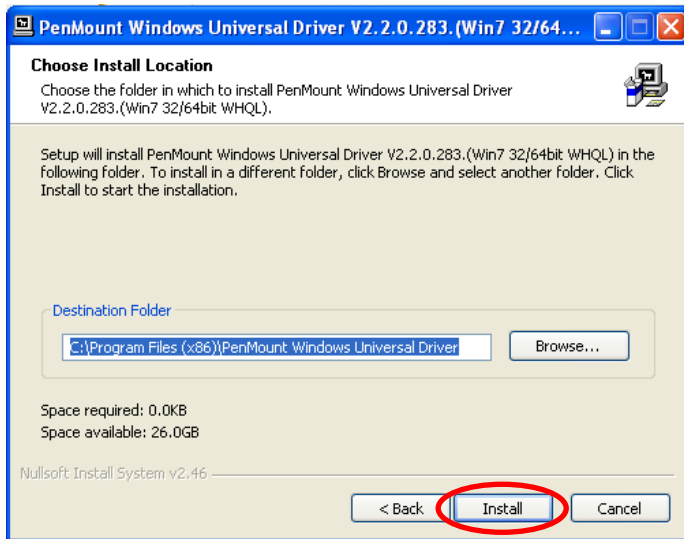
1. Go to CD-ROM to copy the driver to your device.  
The touch driver can be obtained from:  
CD:\TPM-4100\_TP-4100\Driver\Win\_XP\_7\
2. Connect USB or serial cable to your device (USB and serial can not be used simultaneously).
3. Executing Setup.exe.
4. Click “Next” button to continue installation.



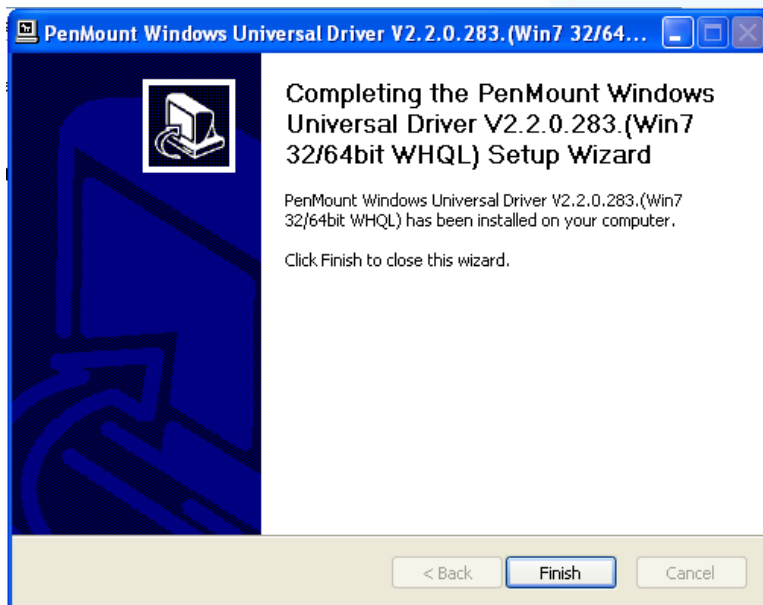
5. Click “I Agree” button.



6. Click “Install” button to install driver.



7. Click "Finish" to finish installation.



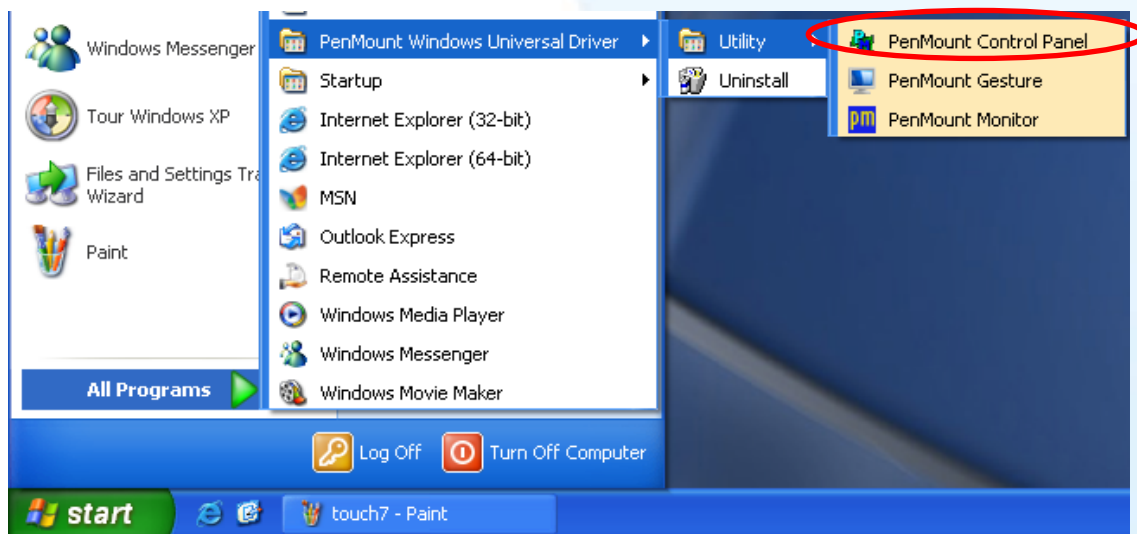
## Tips & Warnings



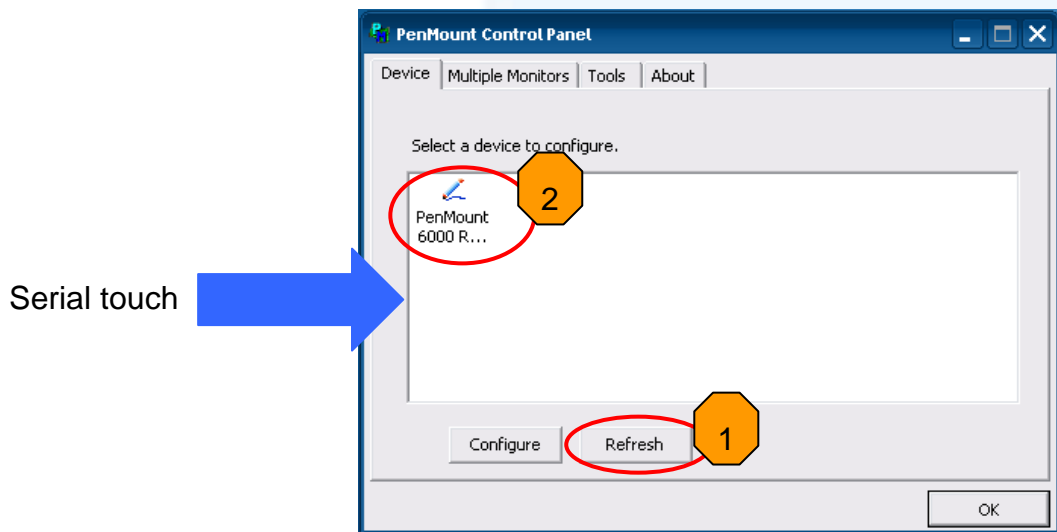
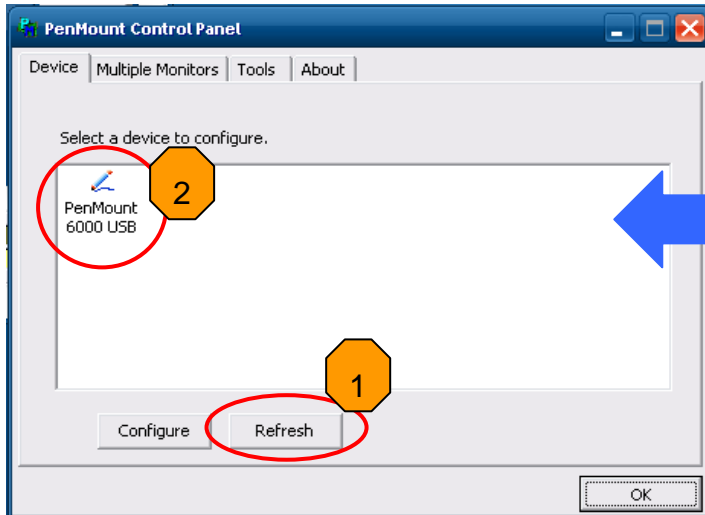
When the system first detects TPM-4100/TP-4100, a screen appears that shows "Unknown Device". Do not use this hardware wizard. Press Cancel.



8. If the USB or serial touch doesn't work, following the steps below:
  - a. Start→All Programs→PenMount Windows Universal Driver→Utility→PenMount Control Panel.



- b. "Device" tab→click "Refresh" button to search USB or serial touch screen monitor→ if search is successful, "PenMount 6000 USB" or "PenMount 6000 RS232" will show.

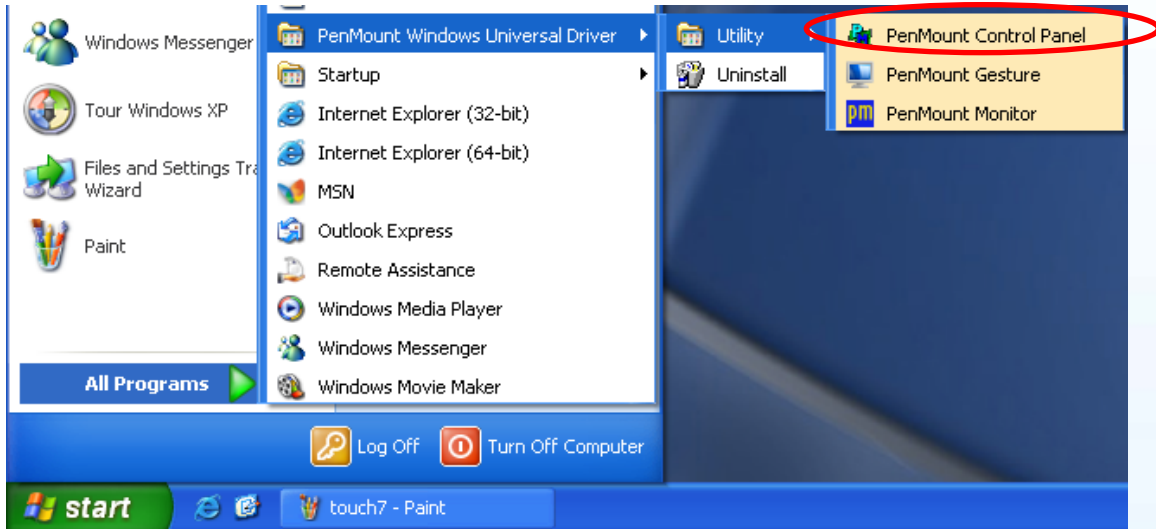


c. The USB or serial touch driver has been installed.

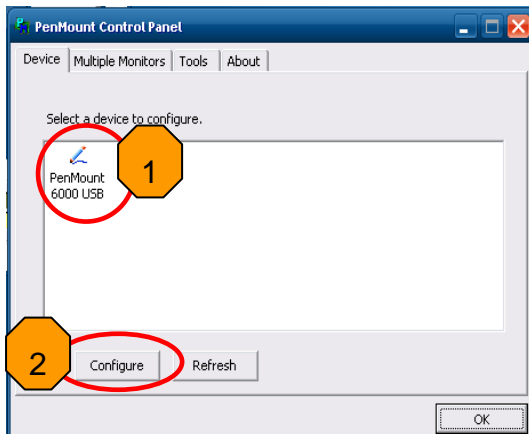
## 2.4.1.2. Configuring

### Calibration

1. Start→All Programs→PenMount Windows Universal Driver→Utility→PenMount Control Panel.

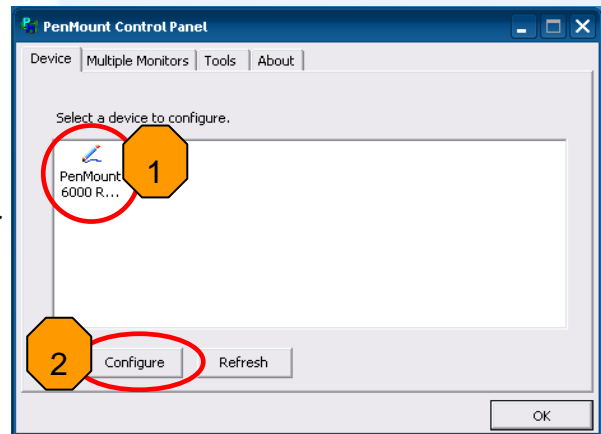


2. Check if the pattern "PenMount 6000 USB" or "PenMount 6000 RS232" shows. If yes, select a device and click "Configure" button. If no, refer to Sec.2.4.1.1.



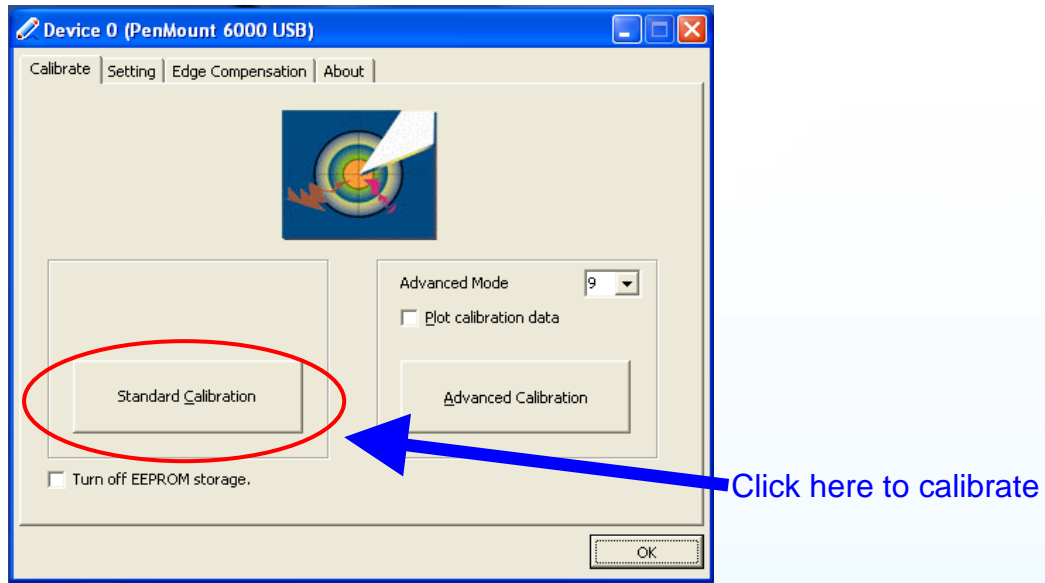
USB touch driver

Or



Serial touch driver

3. Click "Standard Calibration" to calibrate.



## Change the COM Port

For serial touch driver

**Method1:** The touch driver will detect all com port to find what com port connects to serial touch screen monitor automatically when PC reboots every time.

**Method2:** Please refer to Sec.2.4.1.1 →Step 8. to detect again.

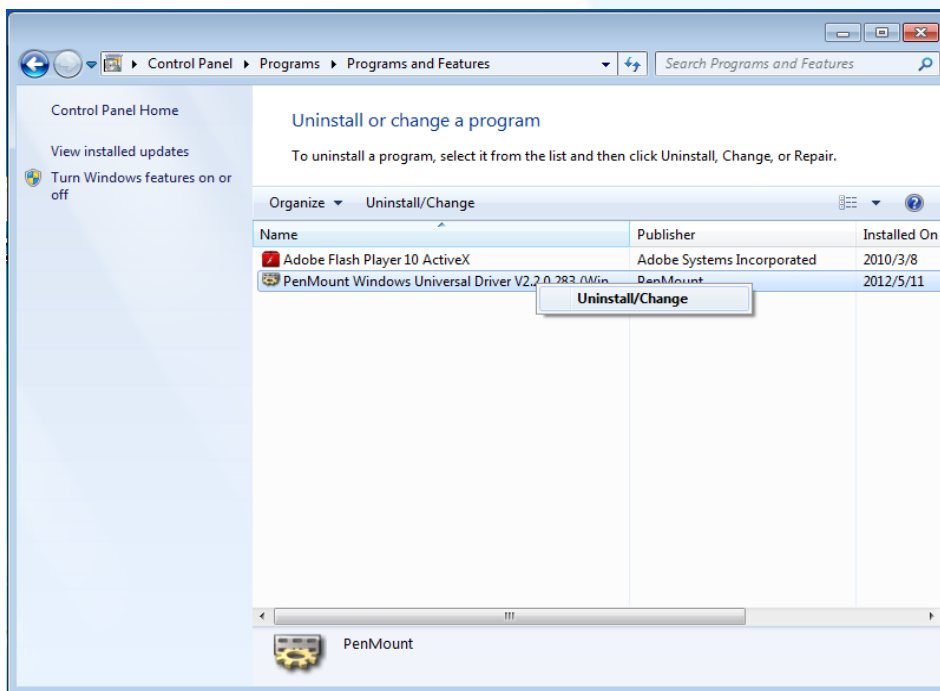
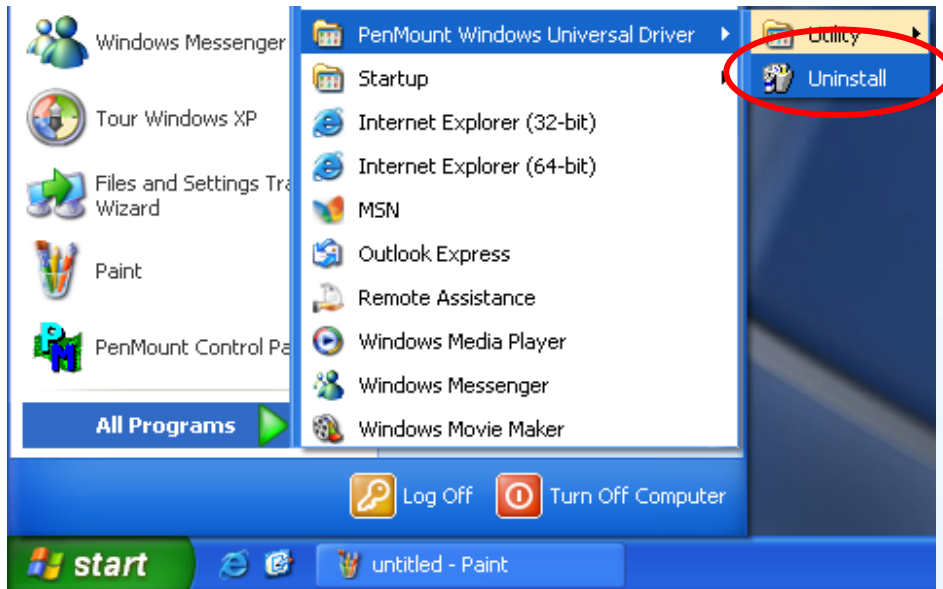
## Simulating right mouse button

Please refer to “Simulating right mouse button” in [Sec.2.3.1.2.](#)

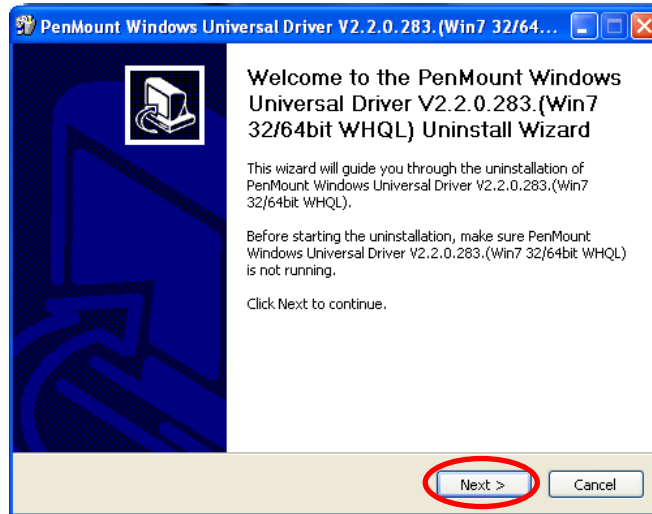
## 2.4.1.3. Uninstall

Follow the steps below to uninstall the PenMount universal touch driver.

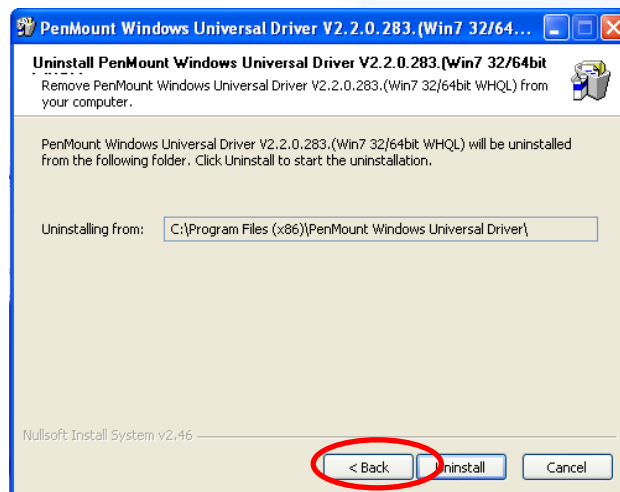
1. XP: Start → All Programs → PenMount Windows Universal Driver → Uninstall.  
Win7: Control Panel → Programs → Programs and Features



2. Click "Next" button.



3. Click "Uninstall" button.



4. Click "Finish" button to reboot.

