

MGate 5118 Series J1939 Gateway User's Manual

Edition 1.0, December 2016

www.moxa.com/product

MOXA[®]

© 2016 Moxa Inc. All rights reserved.

MGate 5118 Series J1939 Gateway User's Manual

The software described in this manual is furnished under a license agreement and may be used only in accordance with the terms of that agreement.

Copyright Notice

© 2016 Moxa Inc. All rights reserved.

Trademarks

The MOXA logo is a registered trademark of Moxa Inc.
All other trademarks or registered marks in this manual belong to their respective manufacturers.

Disclaimer

Information in this document is subject to change without notice and does not represent a commitment on the part of Moxa.

Moxa provides this document as is, without warranty of any kind, either expressed or implied, including, but not limited to, its particular purpose. Moxa reserves the right to make improvements and/or changes to this manual, or to the products and/or the programs described in this manual, at any time.

Information provided in this manual is intended to be accurate and reliable. However, Moxa assumes no responsibility for its use, or for any infringements on the rights of third parties that may result from its use.

This product might include unintentional technical or typographical errors. Changes are periodically made to the information herein to correct such errors, and these changes are incorporated into new editions of the publication.

Technical Support Contact Information

www.moxa.com/support

Moxa Americas

Toll-free: 1-888-669-2872
Tel: +1-714-528-6777
Fax: +1-714-528-6778

Moxa Europe

Tel: +49-89-3 70 03 99-0
Fax: +49-89-3 70 03 99-99

Moxa India

Tel: +91-80-4172-9088
Fax: +91-80-4132-1045

Moxa China (Shanghai office)

Toll-free: 800-820-5036
Tel: +86-21-5258-9955
Fax: +86-21-5258-5505

Moxa Asia-Pacific

Tel: +886-2-8919-1230
Fax: +886-2-8919-1231

Table of Contents

1. Introduction	1-1
Overview	1-2
Package Checklist	1-2
Product Features	1-3
2. Getting Started	2-1
Connecting the Power	2-2
Connecting Serial Devices	2-2
RS-485 Termination and Pull High/Low Resistors	2-2
Connecting to a Host or the Network	2-2
Installing the Software (Optional)	2-3
Wiring Requirements	2-3
LED Indicators	2-4
Dimensions	2-5
Adjustable Pull High/Low Resistors for the Serial Port	2-5
Pin Assignments	2-6
Power Input and Relay Output (SELV) Pinouts	2-6
Hardware Installation	2-7
Specifications	2-7
microSD Card	2-9
Backing Up a Configuration	2-9
Configuring an MGate (Mass deployment/Replacement)	2-9
microSD card Write Failure	2-10
Quick Setup	2-10
Step 1: System Setting	2-10
Step 2: Select Protocol	2-11
Role 1 and Role 2 of MGate 5118	2-11
3. Device Search Utility	3-1
Installing the Software	3-2
Starting the Device Search Utility (DSU)	3-5
Connecting to the Unit	3-5
Broadcast Search	3-6
Search IP	3-7
Locate	3-8
Upgrading the Firmware	3-9
4. Web Console Configuration	4-1
Overview	4-2
Basic Settings	4-3
Network Settings	4-4
Serial Settings	4-5
Protocol Settings	4-5
System Management	4-17
DoS Defense	4-18
LLDP Settings	4-21
Certificate	4-21
Misc. Settings	4-22
System Monitoring – System Status	4-26
System Monitoring – Protocol Status	4-27
Fault Protection and Status Monitoring	4-31
Restart	4-32
Logout	4-32
MXView	4-32
MXconfig	4-32

Introduction

Welcome to the MGate 5118 CAN-J1939 gateway series that converts J1939 to Modbus RTU/ASCII/TCP, PROFINET, and EtherNet/IP protocols.

All the 5118 gateways have dual DC power input for redundancy. Magnetic serial port isolation is also provided.

In this chapter, we give an introduction to the MGate 5118. The following topics are covered in this chapter:

- **Overview**
- **Package Checklist**
- **Product Features**

Overview

The MGate 5118 industrial protocol gateway series supports the SAE J1939 protocol, which is based on CAN bus (Controller Area Network). SAE J1939 is used to implement communication and diagnostics among vehicle components, diesel engine generators, and compression engines, and it is suitable for the heavy-duty truck industry and backup power systems. It is now common to use an engine control unit (ECU) to control these kinds of devices, and more and more applications are using PLCs for process automation to monitor the status of J1939 devices connected to an ECU.

The MGate 5118 gateway series supports the Modbus RTU/ASCII/ TCP, EtherNet/IP, and PROFINET protocols to support most PLC applications. Devices that support the J1939 protocol can be monitored and controlled by PLCs and SCADA systems that use the Modbus RTU/ASCII/TCP, EtherNet/IP, and PROFINET protocols. With regard to the MGate 5118 series, you can use the same gateway model in a variety of PLC environments.

The MGate 5118 gateway series supports a web console for easy configuration and maintenance, and the built-in traffic monitor function monitors J1939 protocol traffic, allowing users to monitor the status of connected CAN devices, including error count, packet count, and bus-offline. The traffic monitor function can also be used to troubleshoot CAN devices. The diagnostics tool helps users to check CAN device settings and indicates CAN device availability by reading the J1939 network address. In addition, the MGate 5118 gateway series has a built-in Live List function for when two or more J1939 devices are connected to the same CAN bus. This function shows the PGN and address of packets transmitted from each device, giving users the ability to gauge the loading of the CAN bus.

To detect loose cables, the MGate 5118 gateway series supports status monitoring and fault protection functions. The status monitoring function notifies a PLC when the cable between the gateway and CAN device is loose. In addition, the fault protection function executes actions predefined by the user when the cable between the gateway and CAN device is loose.

Windows-Based Utility and Web Console for Easy Setup

A Windows-based utility is provided to make it easy to search for and locate devices, assign IP addresses, import/export configuration files, and upgrade the the MGate 5118's firmware. The utility automatically connects to all available MGate 5118 units on the local area network (LAN). A user-friendly web console is provided to configure the device from a web browser.

Package Checklist

All models in the MGate 5118 series are shipped with the following items:

Standard Accessories

- 1 MGate 5118 gateway series
- Documentation & software CD
- Quick installation guide
- Product warranty statement

Optional Accessories

- **Mini DB9F-to-TB Adapter:** DB9 female to terminal block adapter for RS-422/485 applications
- **WK-51-01:** wall-mounting kit, 51 mm wide

NOTE Notify your sales representative if any of the above items is missing or damaged.

Product Features

- Key-in-free J1939 command auto detection
- Built-in J1939 traffic monitoring/diagnostics/live-list tools
- Support J1939 to Modbus RTU/ASCII/TCP, EtherNet/IP, PROFINET protocol conversion
- Ready for hazardous locations: C1D2, ATEX, IECEx
- microSD card for configuration backup/duplication and event log
- 2 kV CAN bus and Modbus serial port isolation
- -40 to 75°C wide operating temperature range models available

Getting Started

This chapter provides basic instructions for installing the MGate 5118.

The following topics are covered in this chapter:

❑ **Connecting the Power**

❑ **Connecting Serial Devices**

- RS-485 Termination and Pull High/Low Resistors
- Connecting to a Host or the Network
- Installing the Software (Optional)

❑ **Wiring Requirements**

❑ **LED Indicators**

❑ **Dimensions**

❑ **Adjustable Pull High/Low Resistors for the Serial Port**

❑ **Pin Assignments**

❑ **Power Input and Relay Output (SELV) Pinouts**

❑ **Hardware Installation**

❑ **Specifications**

❑ **microSD Card**

- Backing Up a Configuration
- Configuring an MGate (Mass deployment/Replacement)
- microSD card Write Failure

❑ **Quick Setup**

- Step 1: System Setting
- Step 2: Select Protocol
- Role 1 and Role 2 of MGate 5118

Connecting the Power

The unit can be powered by connecting a power source to the terminal block.

1. The unit can be powered by connecting a power source to the terminal block.
2. The power input range is from 12 to 48 VDC.

To remove the wire from the terminal block, use a flathead screwdriver to push the orange slot next to the terminal block hole, and then pull the wire out.

Note that the unit does not have an on/off switch. It automatically turns on when it receives power. The PWR LED on the front panel will glow to indicate that the unit is receiving power. There are two DC power inputs for redundancy.

Connecting Serial Devices

The unit's serial port(s) are located on the front panel. If you are connecting an RS-485 multidrop network with multiple devices, note the following:

- All devices that are connected to a single serial port must use the same protocol (i.e., either Modbus RTU or Modbus ASCII).
- Each master device must connect to its own port on the unit. If you are connecting to a network with both master and slave devices, the master must be connected to a separate port from the slaves.
- For the CAN port, plug CAN_L and CAN_H into the terminal block. If another device is connected to the same CAN bus, use the Ext_CAN_L and Ext_CAN_H as extension pins

For serial port pin assignments, refer to the **Pin Assignments** section.

RS-485 Termination and Pull High/Low Resistors

In some critical RS-485 environments, you may need to add termination resistors to prevent the reflection of serial signals. When using termination resistors, it is important to set the pull high/low resistors correctly so that the electrical signal is not corrupted. For each serial port, DIP switches or jumper settings are used to set the pull high/low resistor values. A built-in 120 Ω termination resistor can also be enabled.

To modify the termination and pull high/low resistor settings, refer to the hardware reference chapter for your model.



ATTENTION

Do not use the 1 K Ω pull high/low setting on the MGate 5118 when using the RS-232 interface. Doing so will degrade the RS-232 signals and reduce the effective communication distance.

Connecting to a Host or the Network

Two 10/100BaseT Ethernet ports are located on the gateway's back panel. These ports are used to connect the unit to a host or Ethernet network, as follows:

- For normal operation, use a standard straight-through Ethernet cable to connect the unit to your Modbus TCP, EtherNet/IP, or PROFINET network.
- For initial configuration or for troubleshooting purposes, you may connect the unit directly to a PC.

The unit's Link LED will light up to indicate a live Ethernet connection.

Installing the Software (Optional)

The Device Search Utility (DSU) can be installed from the Documentation and software CD. The DSU can be used to connect the MGate with the PC. Follow the onscreen instructions after inserting the CD. For additional details, refer to **Chapter 3: Device Search Utility**.

Wiring Requirements



ATTENTION

Safety First!

Be sure to disconnect the power cord before installing and/or wiring your MGate 5118.

Wiring Caution!

Calculate the maximum possible current in each power wire and common wire. Observe all electrical codes dictating the maximum allowed current for each wire size.

If the current goes over the allowed maximum, the wiring could overheat, causing serious damage to your equipment.

Temperature Caution!

Be careful when handling the MGate 5118. When plugged in, the MGate 5118's internal components generate heat, and consequently the board may be too hot to touch.

You should also observe the following common wiring rules:

- Use separate paths to route wiring for power and devices. If power wiring and device wiring paths must cross, make sure the wires are perpendicular at the point of intersection.

NOTE

Do not run signal or communication wiring and power wiring in the same wire conduit. To avoid interference, wires with different signal characteristics should be routed separately.

- You can use the type of signal transmitted through a wire to determine which wires should be kept separate. The rule of thumb is that wiring that shares similar electrical characteristics can be bundled together.
- Keep input wiring and output wiring separate.
- When necessary, we strongly advise labeling wiring to all devices in the system.

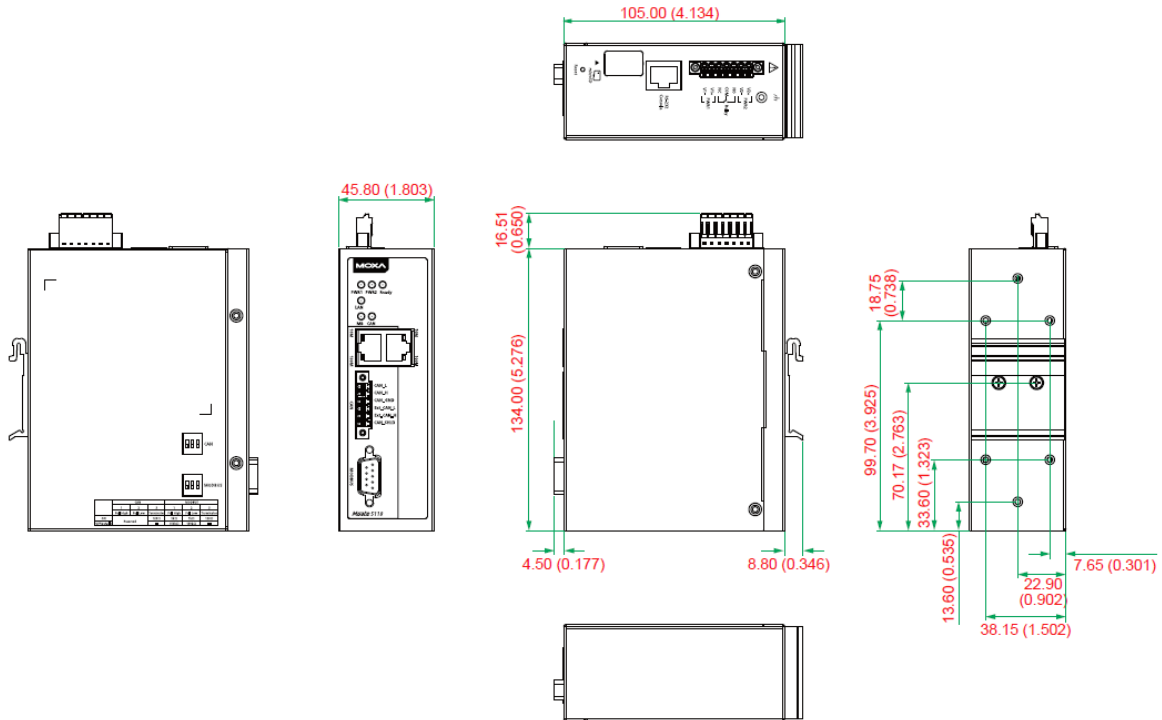
LED Indicators

LED	Color	Description
PWR 1, PWR 2	Green	The power source is connected
	Off	The power cable is disconnected
Ready	Off	Power is off or a fault condition exists
	Green	Steady on: Power is on, and the unit is functioning normally Blinking: The unit is responding to the software's Locate function
	Red	Steady on: Power is on, and the unit is booting up Blinking: Indicates an IP conflict, or the DHCP or BOOTP server is not responding properly Flashing quickly: the microSD card failed
LAN	Green (Flashing only)	The Ethernet port is receiving or transmitting data Modbus TCP Client: Modbus communication in progress Modbus TCP Server: Modbus communication in progress EIP Scanner: MGate I/O is exchanging data with at least one device EIP Adapter: MGate I/O is exchanging data PROFINET: PROFINET I/O interface is exchanging data
	Red (Flashing only)	A communication error occurred Modbus TCP Client: 1. Received an exception code or framing error (parity error, checksum error) 2. Command timeout (slave device is not responding) 3. TCP connection timeout Modbus TCP Server: 1. Received an invalid function code or framing error (parity error, checksum error) 2. Accessed invalid register address or coil address Ethernet/IP Scanner: 1. Command timeout (the adapter is not responding) 2. TCP connection timeout Ethernet/IP Adapter: The connection was refused due to incorrect configuration
	Off	No communication
MB*	Green (Flashing only)	Modbus is receiving or transmitting data
	Red (Flashing only)	A communication error occurred Master Mode: 1. Received an exception code or framing error (parity error, checksum error) 2. Command timeout (the slave device is not responding) Slave Mode: 1. Received an invalid function code or framing error (parity error, checksum error) 2. Accessed invalid register address or coil address
	Off	No communication
CAN	Green (Flashing only)	CAN bus(J1939) communication is receiving or transmitting data
	Red (Steady)	A communication error occurred 1. The J1939 address claim failed 2. CAN is in bus-off state because the error counter is exceeding its limitations
	Off	No communication
Eth1, Eth2	Green	Indicates an 100 Mbps Ethernet connection
	Amber	Indicates a 10 Mbps Ethernet connection
	Off	The Ethernet cable is disconnected

*Only indicates serial communication status; for Modbus TCP status, please refer to LAN LED indicator.

Dimensions

Unit = mm (inch)



Adjustable Pull High/Low Resistors for the Serial Port

In some critical environments, you may need to add termination resistors to prevent the reflection of serial signals. When using termination resistors, it is important to set the pull high/low resistors correctly so that the electrical signal is not corrupted. The MGate 5118 uses DIP switches to set the pull high/low resistor values for each serial port. Undo the screws and find the DIP switches located at the back side of the PCB.

To add a 120 Ω termination resistor, set switch 3 on the port’s assigned DIP switch to ON; set switch 3 to OFF (the default setting) to disable the termination resistor.

To set the pull high/low resistors to 150 KΩ, set switches 1 and 2 on the port’s assigned DIP switch to OFF. This is the default setting.

To set the pull high/low resistors to 1 KΩ, set switches 1 and 2 on the port’s assigned DIP switch to ON.



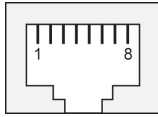
ATTENTION

Do not use the 1 KΩ pull high/low setting on the MGate 5118 when using the RS-232 interface. Doing so will degrade the RS-232 signals and reduce the effective communication distance.

Pin Assignments

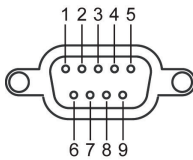
The MGate 5118 uses DB9 serial ports to connect to Modbus RTU or ASCII devices. Each port supports three serial interfaces that is selected by software: RS-232, RS-422, and RS-485 (both 2 and 4-wire).

RJ45 (Ethernet, Console)



Pin	Ethernet	Console (RS-232)
1	Tx+	DSR
2	Tx-	RTS
3	Rx+	GND
4	-	TxD
5	-	RxD
6	Rx-	DCD
7	-	CTS
8	-	DTR

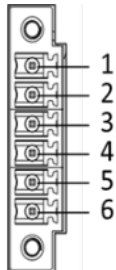
Male DB9 (Serial port)



Pin	RS-232	RS-422/RS-485-4W	RS-485-2W
1	DCD	TxD-(A)	-
2	RxD	TxD+(B)	-
3	TxD	RxD+(B)	Data+(B)
4	DTR	RxD-(A)	Data-(A)
5*	GND	GND	GND
6	DSR	-	-
7	RTS	-	-
8	CTS	-	-
9	-	-	-

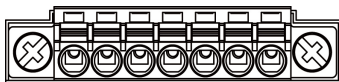
*Signal ground

CAN Port (6-pin Terminal Block)



Pin	CAN
1	CAN_L
2	CAN_H
3	CAN Signal GND
4	Ext-CAN_L
5	Ext-CAN_H
6	CAN_SHLD

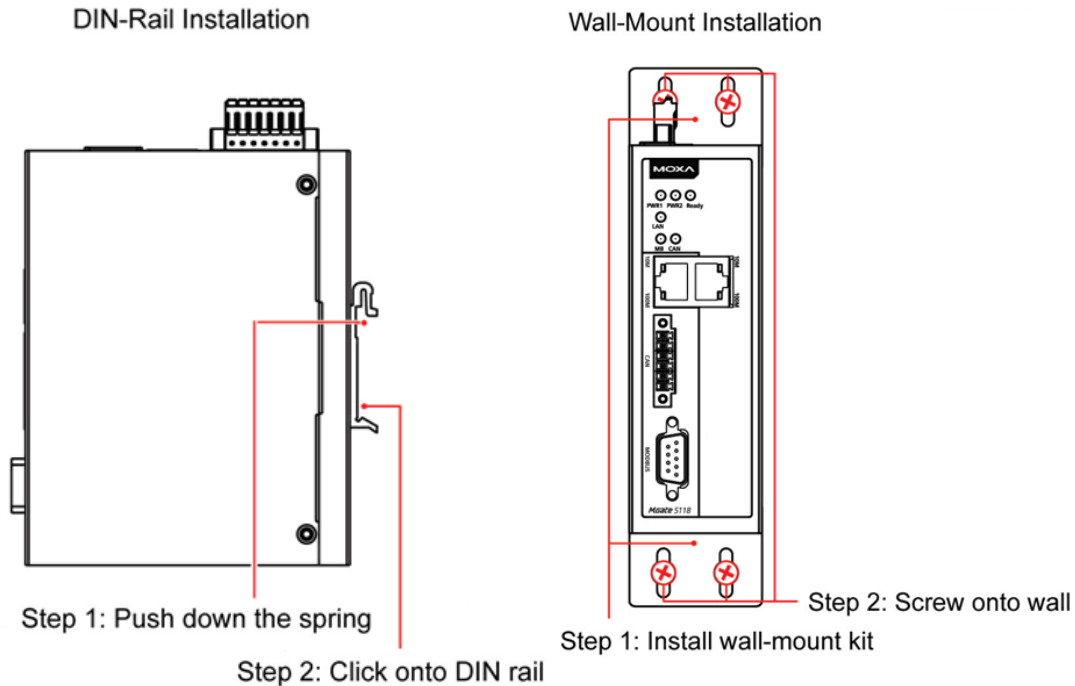
Power Input and Relay Output (SELV) Pinouts



V2+	V2-				V1+	V1-
DC Power Input 2	DC Power Input 2	N.O.	Common	N.C.	DC Power Input 1	DC Power Input 1

Hardware Installation

The MGate 5118 is designed to be attached to a DIN rail or mounted on a wall. For DIN-rail mounting, push down the spring and properly attach it to the DIN rail until it "snaps" into place. For wall mounting, install the wall-mount kit (optional) first and then mount the device to the wall. The following figure illustrates the two mounting options:



Specifications

Industrial Protocols

Protocols: SAE J1939, Modbus RTU/ASCII/TCP, PROFINET, EtherNet/IP

Supported Protocol Conversions:

- J1939 to Modbus RTU/ASCII (Master/Slave)
- J1939 to Modbus TCP (Client/Server)
- J1939 to EtherNet/IP (Scanner/Adapter)
- J1939 to PROFINET (I/O Device)

Ethernet Interface

Protocols: Modbus TCP (Client/Server), PROFINET (I/O device), EtherNet/IP (Scanner/Adapter)

Number of Ports: 2 (1 IP address, supports Ethernet cascading)

Speed: 10/100 Mbps, Auto MDI/MDIX

Connector: 8-pin RJ45

Magnetic Isolation Protection: 1.5 kV (built-in)

CAN-J1939 Serial Interface

Protocols: SAE J1939

Number of Ports: 1

Connectors: 6-pin terminal block

Terminator: 120 Ω

Isolation: 2 kv (built-in)

Data Rate: 250 kbps and 500 kbps

Modbus Serial Interface

Protocols: Modbus RTU/ASCII (Master/Slave)

Number of Ports: 1

Serial Standards: RS-232/422/485, software selectable

Connectors: DB9 male

Pull High/Low Resistor for RS-485: 1 k Ω , 150 k Ω

Terminator for RS-485: 120 Ω

Isolation: 2 kV (built-in)

Modbus Serial Communication Parameters

Data Bits: 8

Stop Bits: 1, 2

Parity: None, Even, Odd, Space, Mark

Flow Control: RTS/CTS, RTS Toggle

Baudrate: 50 bps to 921.6 kbps

Modbus Serial Signals

RS-232: TxD, RxD, RTS, CTS, DTR, DSR, DCD, GND

RS-422: Tx+, Tx-, Rx+, Rx-, GND

RS-485-4w: Tx+, Tx-, Rx+, Rx-, GND

RS-485-2w: Data+, Data-, GND

Software

Configuration: Web console

Utility: Device Search Utility (DSU) for Windows 95, 98, ME, NT, 2000, Windows XP, Server 2003, Vista, Server 2008 (x86/x64), Windows Server 2008 R2, Windows 7/8/8.1 (x86/x64), Windows Server 2012 (x64), Windows 2012 R2

Network Protocols: TCP/IP, UDP, HTTP, SMTP, NTP, DNS, DHCP Client, SNMP (v1, v2, v3), MIB-II, ARP, Telnet

Physical Characteristics

Housing: Metal, IP30

Weight: 589 g (1.30 lb)

Dimensions: 45.8 x 105 x 134 mm (1.8 x 4.13 x 5.28 in)

Environmental Limits

Operating Temperature:

Standard Models: 0 to 60°C (32 to 140°F)

Wide Temp. Models: -40 to 75°C (-40 to 167°F)

Storage Temperature: -40 to 85°C (-40 to 185°F)

Ambient Relative Humidity: 5 to 95% (non-condensing)

Vibration: IEC 60068-2-6, IEC 60068-2-64

Shock: IEC 60068-2-27

Drop: IEC 60068-2-32

Power Requirements

Input Voltage: 12 to 48 VDC

Input Current: 416 mA @ 12 VDC; 195 mA @ 24 VDC; 110 mA @ 48 VDC

Power Connector: Terminal block

Standards and Certifications

Safety: EN 60950-1(LVD), UL 61010-2-201, IEC 60950-1(CB)

Hazardous Location: Class I Division 2, ATEX, IECEx (Note: Certification is underway. Please contact a Moxa sales representative for details.)

EMC: EN 61000-6-2/6-4

EMI: CISPR 22, FCC Part 15B Class B

EMS:

IEC 61000-4-2 ESD: Contact: 4 kV; Air: 8 kV
IEC 61000-4-3 RS: 80 MHz to 1 GHz: 10 V/m
IEC 61000-4-4 EFT: Power: 2 kV; Signal: 1 kV
IEC 61000-4-5 Surge: Power 1 kV; Signal: 1 kV
IEC 61000-4-6 CS: 10 V
IEC 61000-4-8; PFMF: 10 A/m

Reliability

Alarm Functions: Relay, email, SNMP trap

Alert Tools: Built-in buzzer

Storage Card Slot: 1 microSD (SDHC) card slot; supports up to 32 GB

MTBF (mean time between failures)

Time: 727,873 hrs.

Standard: Telcordia SR332

Warranty

Warranty Period: 5 years

Details: See www.moxa.com/warranty

microSD Card

The MGate 5118 gateway series is equipped with a microSD card slot for easy configuration. The microSD card can be used to store an MGate's system configuration settings and the MGate's system log. In addition, a configuration stored on a microSD card can be uploaded automatically to an MGate.

NOTE Inserting a microSD card into an MGate's microSD slot results in one of two actions, depending on what kind of data is currently stored on the card:

1. If the microSD card contains a valid configuration file, the configuration will be automatically copied to the MGate.
2. If the microSD card does not contain a valid configuration file (e.g., if it's empty), the MGate's configuration will be copied to the microSD card.

Backing Up a Configuration

Use the following procedure to copy the configuration of an MGate gateway to a microSD card:

1. Use a PC to format the microSD card to support FAT file systems and delete all of the data on the card.
2. Power off the MGate and insert the microSD card (make sure the microSD card is empty).
3. Power on the MGate. The current settings will be copied to the microSD card.
4. If you modify the MGate's configuration using MGate Manager or the Web Console while the microSD card is installed in the gateway, your configuration changes will be automatically saved to the microSD card when you save the configuration.

Configuring an MGate (Mass deployment/Replacement)

Use the following procedure to copy the configuration stored on a microSD card to an MGate gateway for mass deployment or to replace a faulty unit:

1. Power off the MGate device (often a new device) and insert the microSD card.
2. Power on the MGate device.

3. The configuration file stored on the microSD card will be copied automatically to the MGate gateway.

microSD card Write Failure

The following events will cause the microSD card to experience a write failure.

1. The microSD card has less than 20 MB of free space.
2. The MGate configuration file is read-only.
3. The microSD card’s file system is corrupted.
4. The microSD card is damaged.

The MGate gateway will halt the write action if any of the above conditions exists. The MGate’s Ready LED will flash and the beeper will sound to inform the user of the write failure. If you are replacing the microSD card, the microSD card will be synchronized with the configurations stored on the MGate device. Note that the microSD card should not contain any configuration files; otherwise, the configuration will be copied from the microSD card to the MGate device.



WARNING

If your intention is to back up the configuration of an MGate gateway, it is best practice to **only insert an empty microSD card** into the microSD slot. If the card contains a valid configuration file, that configuration will automatically (without warning) overwrite the MGate’s current configuration.

Quick Setup

The MGate series now provides Quick Setup, an illustrated guide especially designed to make the configuration easy. When you press Quick Setup, you will access the mode and start to configure. Only five steps are needed.

Step 1: System Setting

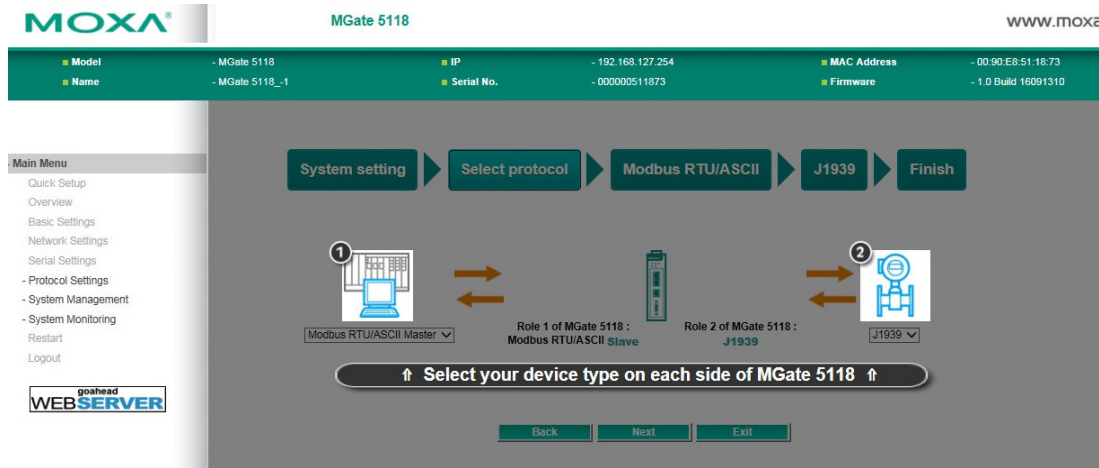
First, configure the Server Settings to identify the units and Network Settings of the MGate.



Server Settings	
Server name	<input type="text" value="MGate 5118_-1"/>
Network Settings	
IP configuration	<input type="text" value="Static"/>
IP address	<input type="text" value="192.168.127.254"/>
Netmask	<input type="text" value="255.255.255.0"/>
Gateway	<input type="text"/>
<input type="button" value="Next"/> <input type="button" value="Exit"/>	

Step 2: Select Protocol

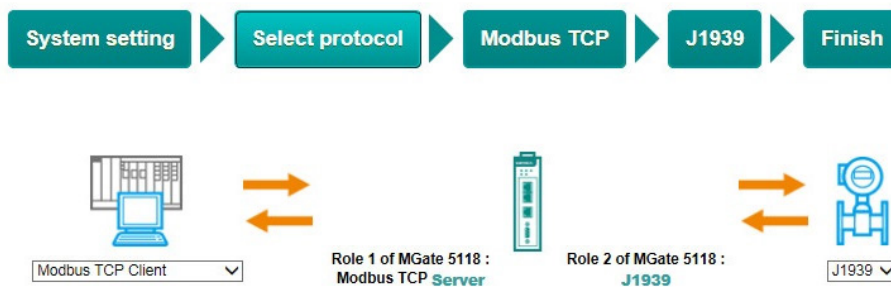
Then, you have to select the protocols used on your devices that are connected through the MGate. After selection, the MGate will automatically change its role to the correct one. For example, if the device is set as a Modbus RTU Master, the MGate will then automatically configure as a Modbus RTU slave by itself. Regarding protocol configuration, please refer to chapter 4.



Role 1 and Role 2 of MGate 5118

Example:

After finishing the device protocol selection, Role 1 and Role 2 of the MGate will be set accordingly. You will need to configure the details on each side with the following steps. Here is an example of Role 1 as a Modbus TCP Server, and Role 2 as a J1939 device.



Modbus TCP Setting:

Set Modbus TCP

The navigation flow consists of five steps: System setting, Select protocol, Modbus TCP, J1939, and Finish. Below the flow is a diagram showing the roles of the MGate 5118 and the user's device. The MGate 5118 acts as a Modbus TCP Server, and the user's device acts as a Modbus TCP Client. The diagram shows bidirectional communication between the MGate 5118 and the user's device.

Server Settings

Unit ID: (1 - 255)
 TCP port:

Buttons: Back, Next, Exit

J1939 settings:

J1939 related settings include the Device Network address, device name, and the transmit method. In addition, the J1939 input/output commands can be set by clicking the **Add** button.

The navigation flow consists of five steps: System setting, Select protocol, Modbus TCP, J1939, and Finish. Below the flow is a diagram showing the roles of the MGate 5118 and the user's device. The MGate 5118 acts as a Modbus TCP Server, and the user's device acts as a Modbus TCP Client. The diagram shows bidirectional communication between the MGate 5118 and the user's device.

Device Settings

Network address: (e.g. 128,130-135,140)
 Device name: [Edit](#)
 Start transmit by:

J1939 I/O Table

*press ctrl key to multi-select!

Index	Type	Name	Network Address	PGN	Offset	Length	Priority
Add Edit Clone Delete Move							

Buttons: Back, Next, Exit

The dialog box is titled "System setting" and is used to add a new J1939 I/O command. It contains the following fields:

- Type: Input Output
- Name:
- Source address: (0 ~ 253, 255)
- PGN: (0 ~ 131071)
- Message offset: (,) (0~14279) Bits (Byte,Bit)
- Data length: (,) (0~14280) Bits (Byte,Bit)

Buttons: OK, Cancel

Device Settings

Network address: (e.g. 128,130-135,140)
 Device name: [Edit](#)

Finish

Once all the configurations are done, you can check if all parameters are correct on this webpage. Moreover, if you want to determine the data mapping status, you can click the View I/O data mapping to know more details. If all of them are correct, press **Save** to make the settings effective.

MGate name MGate 5118_1
 MGate IP config 192.168.127.254
 Netmask 255.255.255.0
 Gateway --

MGate Protocol1 Settings		MGate Protocol2 Settings	
Protocol type	Modbus TCP server	Protocol type	J1939
Unit ID	1	Network address	128-253
TCP port	502	Device name	FF,FF,FF,FF,FF,FF,FF,FF
		Total I/O	0

Back
Save
Exit

Device Search Utility

The following topics are covered in this chapter:

- ❑ **Installing the Software**
- ❑ **Starting the Device Search Utility (DSU)**
- ❑ **Connecting to the Unit**
 - Broadcast Search
 - Search IP
 - Locate
- ❑ **Upgrading the Firmware**

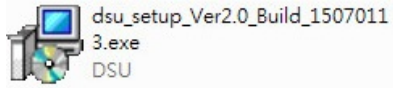
Installing the Software

The following instructions explain how to install the Device Search Utility (**DSU**), a utility for configuring and monitoring MGate 5118 units over a network.

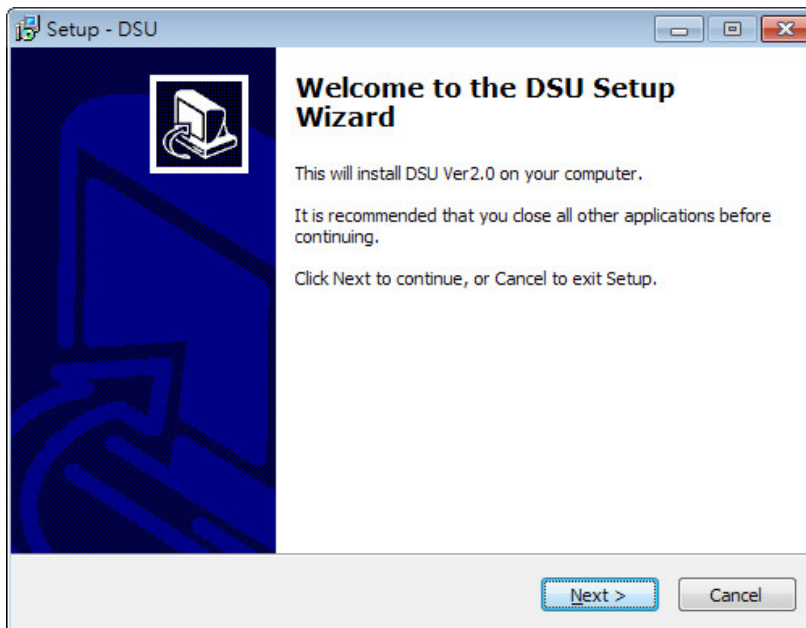
1. Insert the Document and software CD into the CD-ROM drive. Locate and run the following setup program to begin the installation process:

dsu_setup_[Version]_Build_[DateTime].exe

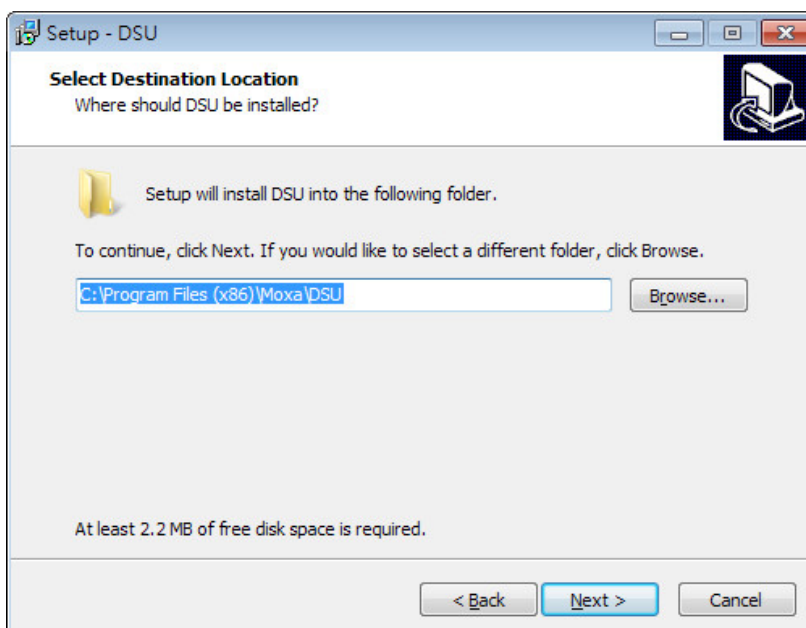
The latest version might be named **dsu_setup_Ver2.0_Build_xxxxxxx.exe**, for example:



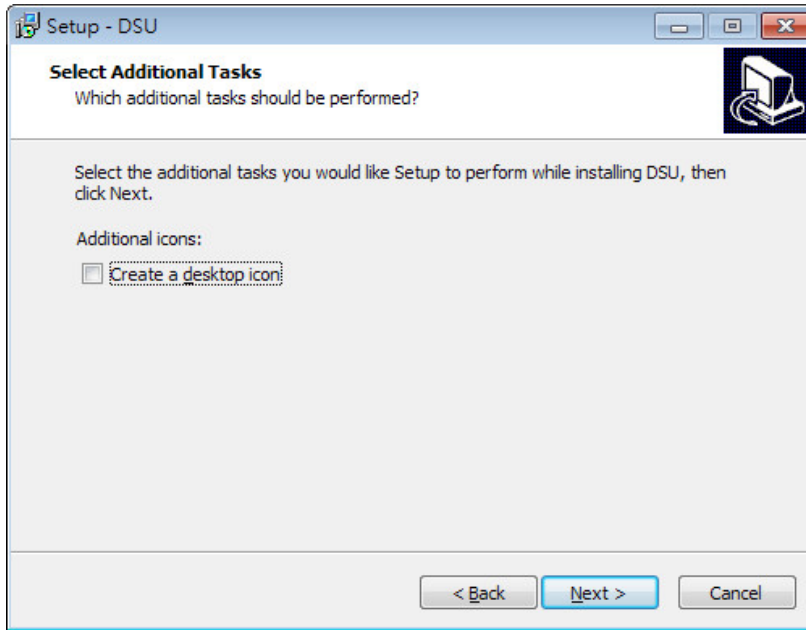
2. You will be greeted by the Welcome window. Click **Next** to continue.



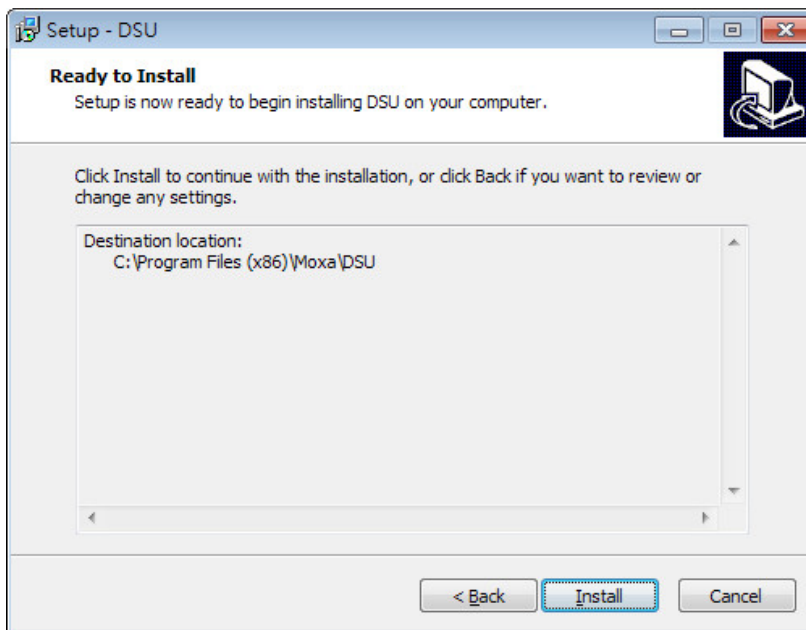
3. When the **Select Destination Location** window appears, click **Next** to continue. You may change the destination directory by clicking on **Browse....**



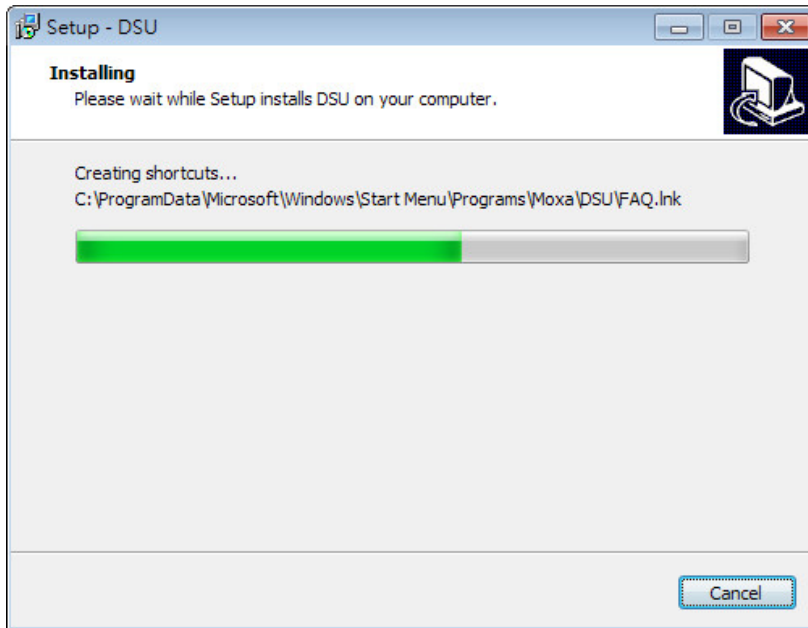
- When the **Select Additional Tasks** window appears, click **Next** to continue. You may select **Create a desktop icon** if you would like a shortcut to the DSU on your desktop.



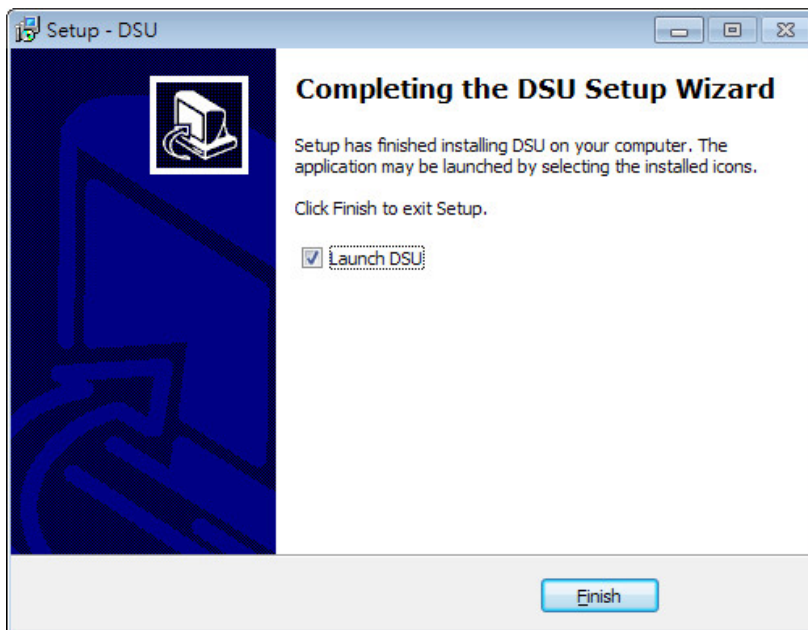
- Click **Install** to start copying the software files.



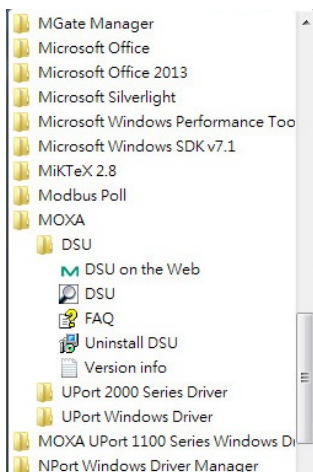
- A progress bar will appear. The procedure should take only a few seconds to complete.



- A message will indicate that the DSU is successfully installed. You may choose to run it immediately by selecting **Launch DSU**.



- You may also open the DSU through **Start → Programs → MOXA → DSU**, as shown below.

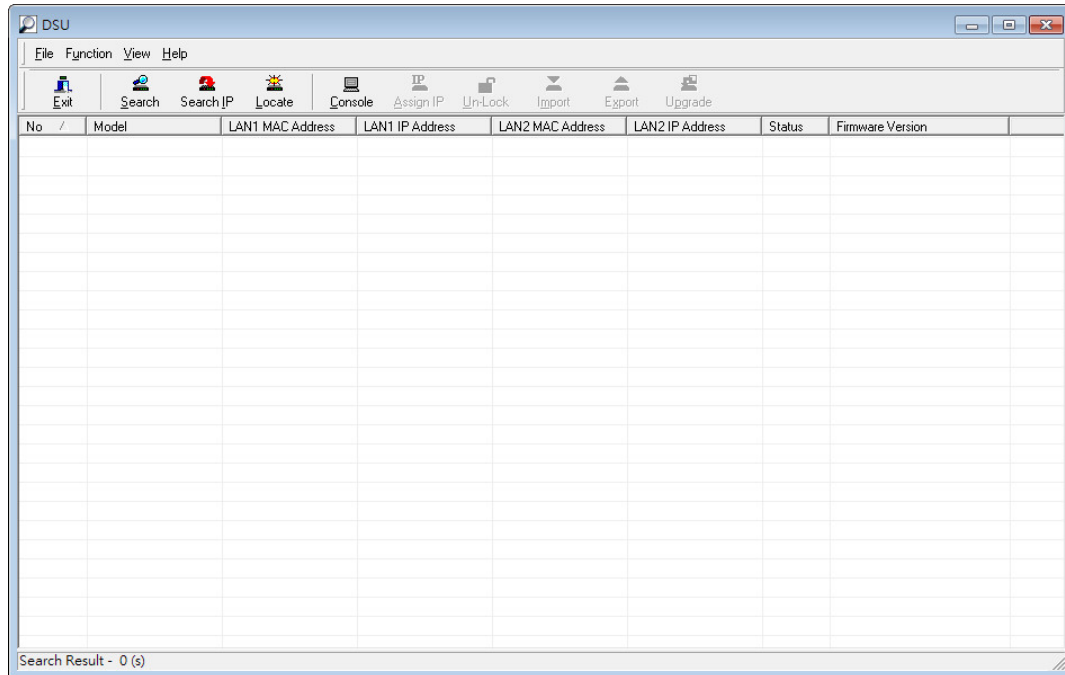


Starting the Device Search Utility (DSU)

The DSU is a Windows-based utility that is used to configure the MGate 5118 Series.

Before running the DSU, make sure that your PC and the MGate 5118 are connected to the same network. Alternatively, the MGate 5118 Series may be connected directly to the PC for configuration purposes. Refer to Chapter 2 for more details.

You may open the DSU from the Windows Start menu by clicking **Start → Programs → MOXA → DSU**. The DSU window should appear as shown below.

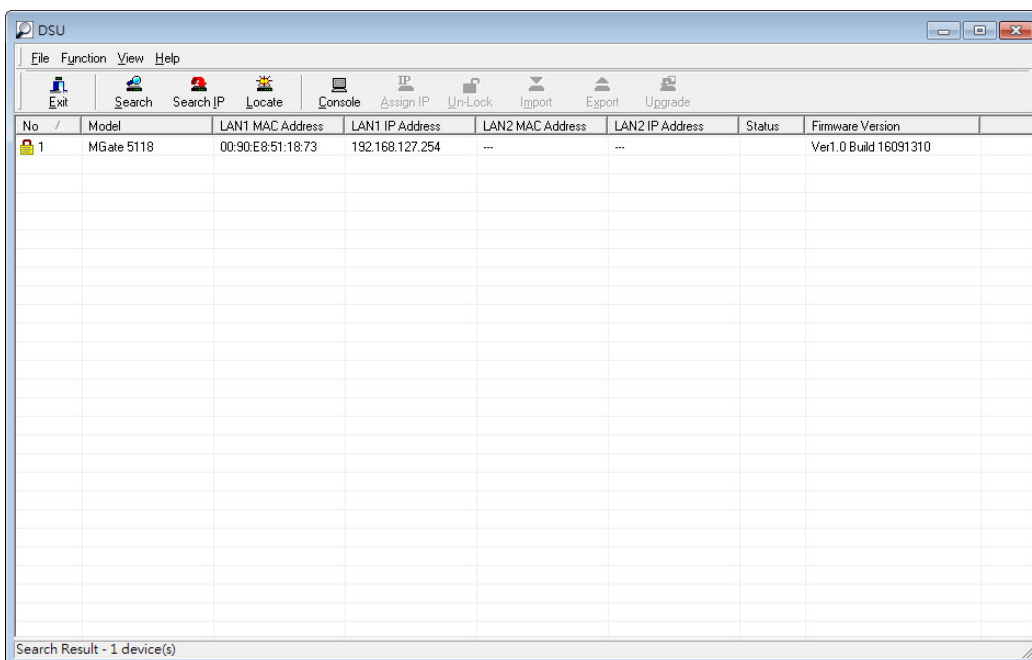
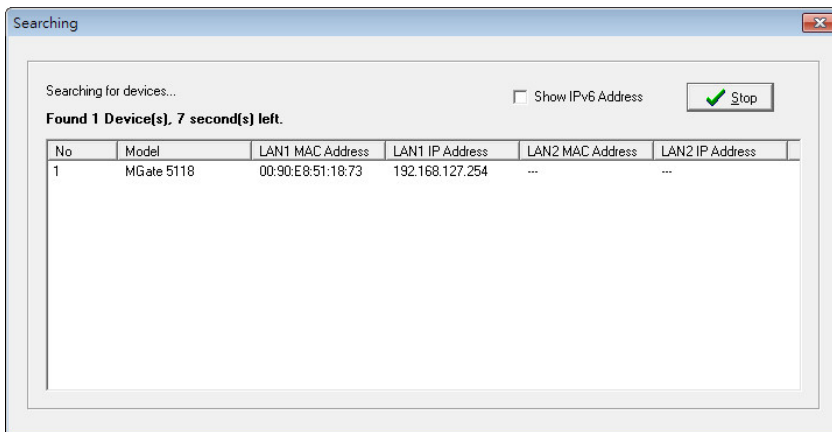
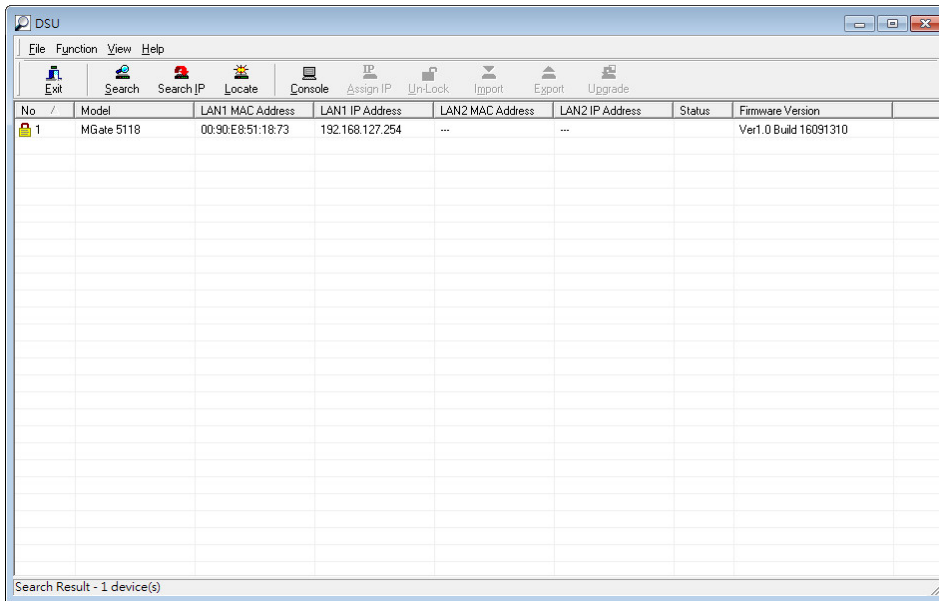


Connecting to the Unit

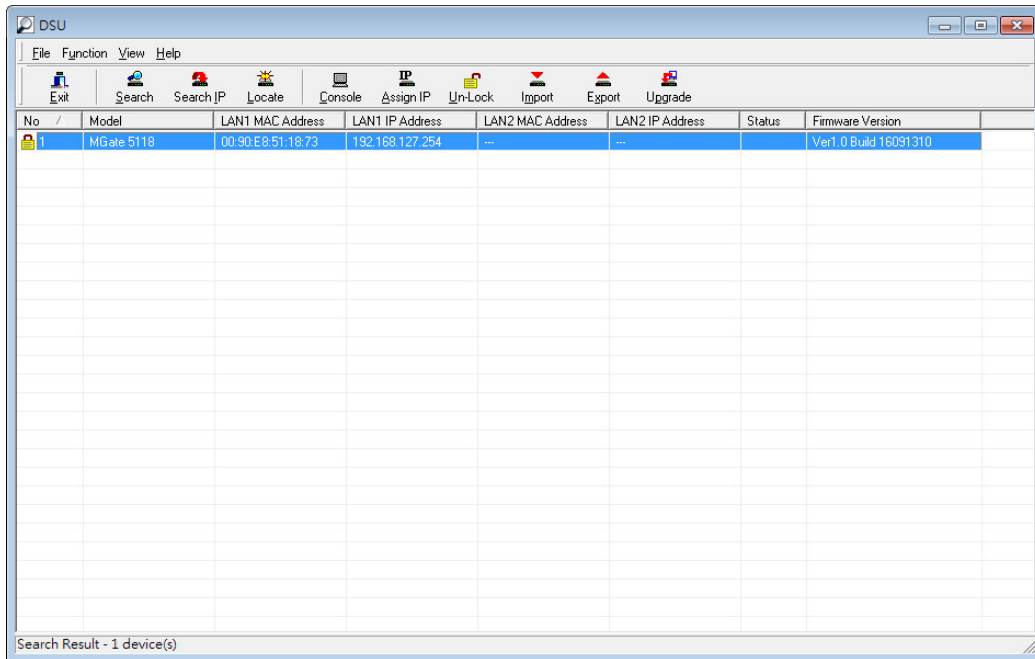
The DSU needs to connect to the unit before the unit can be configured. There are two methods to connect to the unit. **Broadcast Search** is used to find all MGate 5118 units on the LAN. **Search IP** attempts to connect to a specific unit by IP address, which is useful if the unit is located outside the LAN or can only be accessed by going through a router.

Broadcast Search

Click **Search** and a new Search window will pop up.



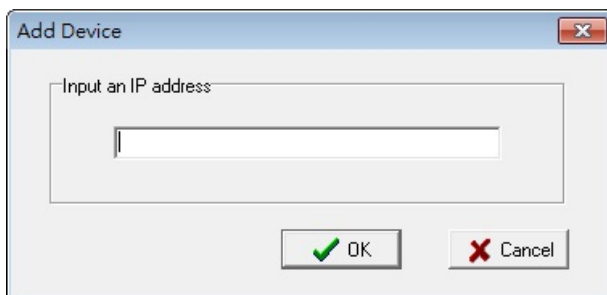
When the search is complete, every MGate 5118 found on the LAN will appear in the DSU window. The MAC address, IP address, and firmware version of each unit will be shown. Select the one you would like to configure.



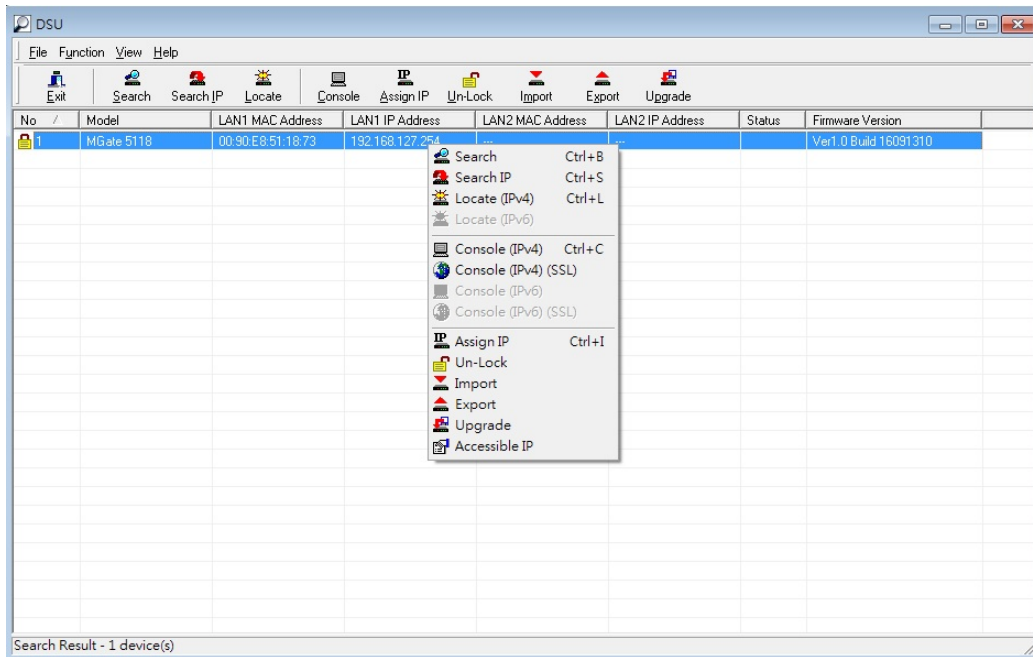
Search IP

Click **Search IP** if you know the IP address of the unit and wish to connect to it directly.

Enter the unit's IP address and click **OK**.

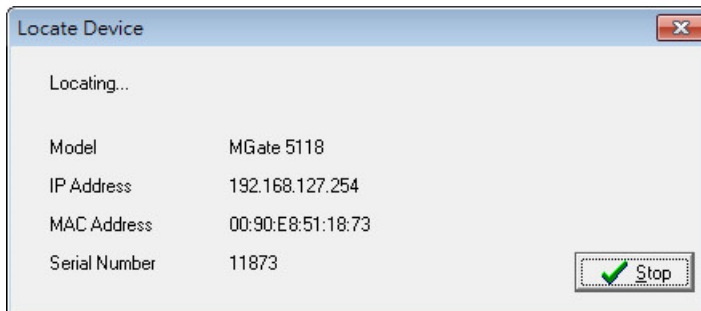


If the search is successful, the unit will be listed in the DSU window. Right click the unit to open a pop-up list of possible actions, or double click a unit to open the web console.



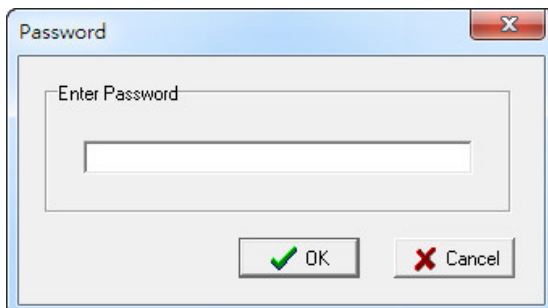
Locate

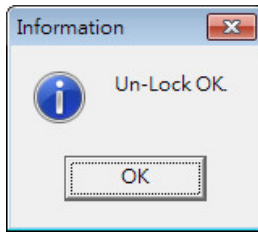
The **Locate** function will cause the unit to beep, so you can determine which unit is the target.



The **Assign IP** function allows you to change the unit's IP addresses.

Use the **Un-Lock** function to execute Import, Export, and Upgrade actions. The default account and password are **Admin** and **Moxa**.





To **Import** or **Export** the configuration file, click the icons to import the configuration file from a laptop, or export the currently used unit's configuration file to a laptop.



ATTENTION

If Search IP fails to locate the MGate 5118, the IP address that you entered might be incorrect. Retry the search and reenter the IP address carefully.

Another possibility is that the MGate 5118 is located on the same LAN as your PC, but on a different subnet. In this case, you can modify your PC's IP address and/or netmask so that it is on the same subnet as the MGate 5118. When your PC and the MGate 5118 are on the same subnet, the DSU should be able to find the unit.

Upgrading the Firmware

You can obtain the latest firmware for the MGate 5118 from www.moxa.com. After downloading the new firmware file to your PC, you can use the DSU to write it to your MGate 5118. Select the desired unit from the DSU list and then click **Upgrade** to begin the process.

Web Console Configuration

The MGate 5118 provides a web console for easy configuration through a web browser such as Microsoft Internet Explorer or Google Chrome.

The following topics are covered in this chapter:

- **Overview**
- **Basic Settings**
- **Network Settings**
- **Serial Settings**
- **Protocol Settings**
 - System Management
 - DoS Defense
 - LLDP Settings
 - Certificate
 - Misc. Settings
 - System Monitoring – Protocol Status
 - Fault Protection and Status Monitoring
- **Restart**
- **Logout**
- **MXView**
- **MXconfig**

Overview

To connect to the MGate web console, open a web browser and enter the MGate gateway's IP address.

http://<MGate IP address>

The default IP addresses of LAN1 is 192.168.127.254. If you are unable to log in to the unit, you can use the DSU to first search for the unit. Refer to the **Device Search Utility**.

When the login page pops up, enter the account name and password. The default Account name and Password are Admin and moxa, respectively.

Account

Password

Login

Once logged in to the web console, you will see the previous login record. If the login record is not as what you accessed previously, please change the password immediately.

The welcome page shows information relevant to the MGate 5118.

MOXA MGate 5118 WWW.MOXA.COM

■ Model	- MGate 5118	■ IP	- 192.168.127.254	■ MAC Address	- 00:90:E8:51:18:73
■ Name	- MGate 5118_1	■ Serial No.	- 000000511873	■ Firmware	- 1.0 Build 16091310

Welcome to MGate 5118

Model name	MGate 5118
Serial No.	000000511873
Firmware version	1.0 Build 16091310
Ethernet IP address	192.168.127.254
Ethernet MAC address	00:90:E8:51:18:73
Up time	0 days 03h:39m:18s
Power 1	On
Power 2	Off
microSD	Not Detected

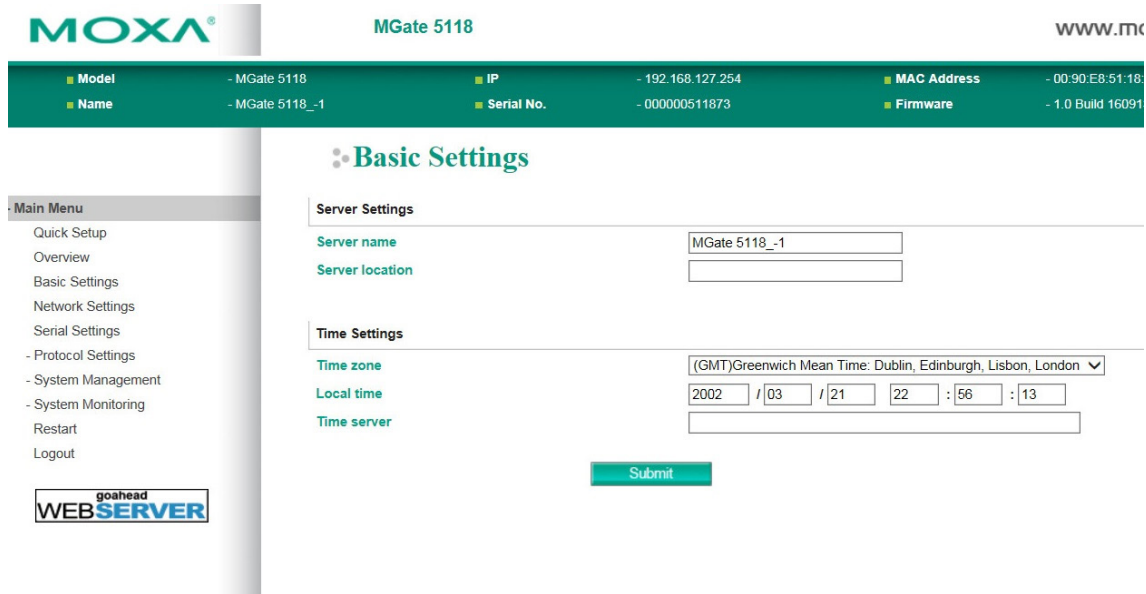
Main Menu

- Quick Setup
- Overview
- Basic Settings
- Network Settings
- Serial Settings
- Protocol Settings
- System Management
- System Monitoring
- Restart
- Logout

goahead
WEB SERVER

Basic Settings

Server Settings and **Time Settings** are shown on the **Basic Settings** page. Click **Submit** to save the current changes to the unit and click **Restart** once all the settings have been changed. The unit will reboot immediately to use the new settings.



Server Setting

Parameter	Value	Description
Server Name	(an alphanumeric string)	You can enter a name to help you identify the unit, such as the function, etc.
Server Location	(an alphanumeric string)	You can enter a name to help you identify the unit location. Such as "Cabinet A001."

Time Settings

The MGate has a built-in Real-Time Clock for time calibration functions. Functions such as the log function can add real-time information to the message.



ATTENTION

First-time users should select the time zone first. The console will display the "real time" according to the time zone relative to GMT. If you would like to modify the real-time clock, select **Local time**. MGate's firmware will modify the GMT time according to the Time Zone.

Parameter	Value	Description
Time Zone	User's selectable time zone	This field shows the currently selected time zone and allows you to select a different time zone.
Local Time	User's adjustable time.	(1900/1/1-2037/12/31)
Time Server	IP or Domain address (e.g., 192.168.1.1 or time.stdtime.gov.tw)	This optional field specifies your time server's IP address or domain name if a time server is used on your network. The module supports SNTP (RFC-1769) for automatic time calibration. The MGate will request time information from the specified time server every 10 minutes.



ATTENTION

If the dispersion of the time server is higher than the client (MGate), the client will not accept NTP messages from the time server. MGate's dispersion is 1 second. You must configure your time server with a dispersion value lower than 1 sec for the NTP process to complete.

Network Settings

The **Network** tab is where the unit's network settings are configured. You can modify the **LAN mode**, **Network Configuration**, **IP Address**, **Netmask**, **Default Gateway**, and **DNS**.

Parameter	Value	Description
IP configuration	Dual Subnet, Single IP	Select Static IP if you are using a fixed IP address. Select one of the other options if the IP address is set dynamically.
IP address	192.168.126.254 (or another 32-bit number)	The IP (Internet Protocol) address identifies the server on the TCP/IP network
Netmask	255.255.255.0 (or another 32-bit number)	Identifies the server as belonging to a Class A, B, or C network.
Gateway	0.0.0.0 (or another 32-bit number)	The IP address of the router that provides network access outside the server's LAN.
DNS Server 1	0.0.0.0 (or another 32-bit number)	This is the IP address of the primary domain name server.
DNS Server 2	0.0.0.0 (or another 32-bit number)	This is the IP address of the secondary domain name server.

Serial Settings

The **Serial** tab is where each serial port's communication parameters are configured. You can configure **Baudrate**, **Parity**, **Stop Bit**, **Flow Control**, **FIFO**, **Interface**, **RTS on delay**, and **RTS off delay**.

Serial Settings

Port	Baud rate	Parity	Data bit	Stop bit	Flow control	FIFO	Interface	RTS on delay	RTS off delay
1	115200	Even	8	1	RTS toggle	Enable	RS-485 2-wire	0	0

Parameter	Value
Baudrate	50 bps to 921600 bps
Parity	None, Odd, Even, Space, Mark
Stop Bits	1, 2
Flow Control	None, RTS/CTS, DTR/DSR, RTS Toggle
UART FIFO	Enable, Disable
Interface	RS-232
	RS-422
	RS-485, 2W
	RS-485, 4W
RTS On Delay	0 to 100 ms
RTS Off Delay	0 to 100 ms

RTS Delay

The **RTS Toggle** function is used for **RS-232** mode only. This flow-control mechanism is achieved by toggling the RTS pin in the transmission direction. When activated, data will be sent after the RTS pin is toggled **ON** for the specified time interval. After the data transmission is finished, the RTS pin will toggle **OFF** for the specified time interval.

Protocol Settings

The MGate 5118 supports J1939, Modbus RTU/ASCII, Modbus TCP, EtherNet/IP and PROFINET protocols. Each role is determined by your device's settings. **Modbus TCP (Client/Server)**, **Modbus RTU/ASCII (Master/Slave)**, **EtherNet/IP (Adapter/Scanner)**, and **PROFINET (IO-Device)** can be selected.

The setting of each protocol is described as follows:

1. J1939 Settings

J1939 Settings

Device Settings

Network address: (e.g. 128,130-135,140)

Device name: [Edit](#)

Start output transmission by:

Endian swap:

CAN bus-off reset:

Baudrate:

J1939 I/O Table

[Autobus](#) [Add](#) [Edit](#) [Clone](#) [Delete](#) [Move](#)

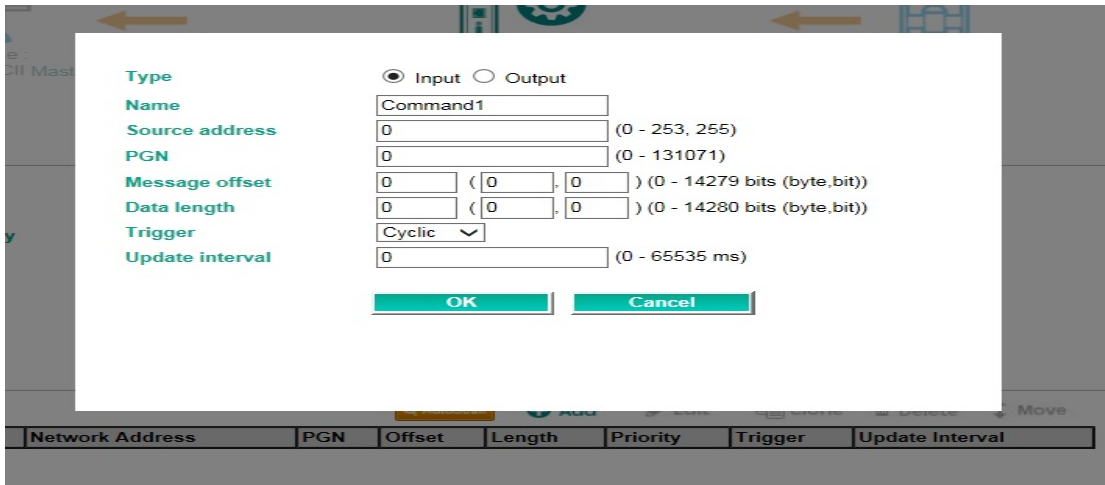
Index	Type	Name	Network Address	PGN	Offset	Length	Priority	Trigger	Update Interval
-------	------	------	-----------------	-----	--------	--------	----------	---------	-----------------

Device Settings

Parameter	Value	Default	Description
Network address	Numerical number	128-253	The MGate's network address in the J1939 bus
Device name	The parameters regarding to J1939.	FFFFFFFFFFFFFFFF	A set of J1939 parameter combinations represented in hex value.
Start output transmission by	Data update, startup	Data update	To determine the way the transmission starts
Endian swap	Data Byte Swapping None: Don't need to swap Byte: 0x0A, 0x0B, 0x0C, 0x0D becomes 0x0B, 0x0A, 0x0D, 0x0C. Word: 0x0A, 0x0B, 0x0C, 0x0D becomes 0x0C, 0x0D, 0x0A, 0x0B. ByteWord: 0x0A, 0x0B, 0x0C, 0x0D becomes 0x0D, 0x0C, 0x0B, 0x0A.	None	Swapping the data
CAN bus-off reset	Disable, Enable	Disable	When some kind of J1939 bus error happens, the MGate will automatically stop communication with the J1939 bus. You may choose Enable to have the MGate rejoin the bus.
Baudrate	250k and 500k bps	250k bps	The baudrate used in this J1939

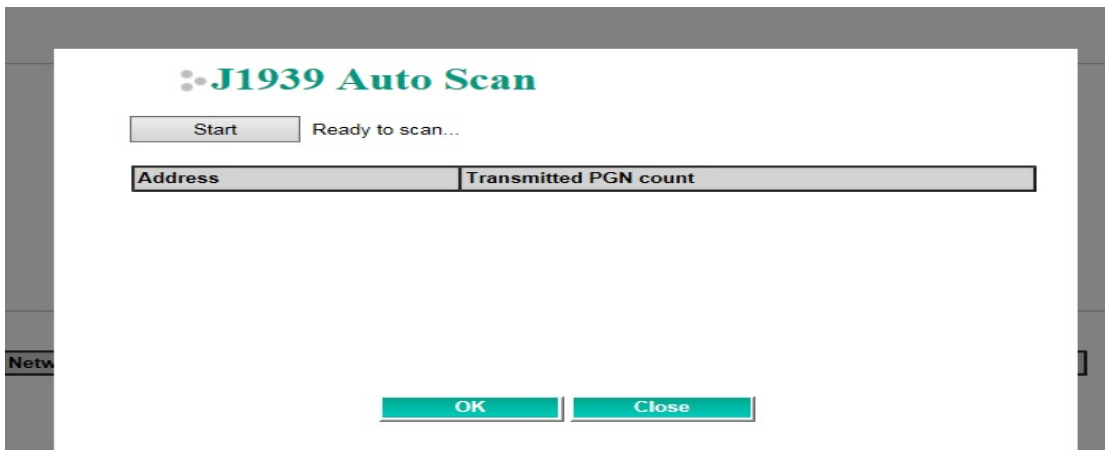
J1939 I/O Table:

To modify the input/output commands of J1939, you have to manually add the J1939 commands into the MGate, according to the J1939 device it is attached to.



AutoScan:

For users' convenience, the MGate 5118 is designed with an innovative command auto-learning function. It can learn all the output commands from the J1939 devices in the same CAN bus. Users don't need to key in the commands one by one. All you have to do is click on the AutoScan button, and a window will pop up.



Click the **Start** button to start learning.

J1939 Auto Scan

Scanning devices... Found 1 Device(s)

Address	Transmitted PGN count
129	2 <input type="button" value="Edit"/>

You will see how many commands are learned from which address.

Click the **Edit** button for further information. If the command is the one you need, click on the check box for **Add to config** and click the **OK** button when finished.

PGN	Priority	Tx Interval (ms)	Already in config	Add to config
1024	6	2003	No	<input type="checkbox"/>
512	6	964	No	<input type="checkbox"/>

Finally, you will see the auto-learned commands are shown in the command table.

J1939 I/O Table

Index	Type	Name	Network Address	PGN	Offset	Length	Priority	Trigger	Update Interval
1	Input	Command1	129	1024	0 (0,0)	64 (8,0)	--	Cyclic	2005
2	Input	Command2	129	512	0 (0,0)	64 (8,0)	--	Cyclic	960

If further modification is required, click on the selected command and click **Edit**.

Type: Input Output

Name:

Source address: (0 - 253, 255)

PGN: (0 - 131071)

Message offset: (,) (0 - 14279 bits (byte,bit))

Data length: (,) (0 - 14280 bits (byte,bit))

Trigger:

Update interval: (0 - 65535 ms)

Whenever the commands are set, remember to click the **Submit** button to activate.

2. Modbus TCP Client (Master) Settings

Modbus TCP Settings

Role Client

Client Settings

Initial delay (0 - 30000 ms)

Max. retry (0 - 5)

Response timeout (10 - 120000 ms)

Modbus Commands

[Add](#)
[Edit](#)
[Clone](#)
[Delete](#)
[Move](#)

Index	Name	Slave IP Address	Slave ID	Function	Address / Quantity	Trigger	Poll Interval	Endian Swap
<input type="button" value="Submit"/>								

Client Settings

Parameter	Value	Default	Description
Initial delay	0 - 30000 ms	0	Some Modbus slaves may take more time to boot up than other devices. In some environments, this may cause the entire system to suffer from repeated exceptions during the initial boot-up. After booting up, you can force the MGate to wait before sending the first request with the Initial Delay setting.
Max. retry	0 - 5	3	This is used to configure how many times the MGate will try to communicate with the Modbus slave.
Response timeout	10 - 120000 ms	1000	According to the Modbus standard, the time it takes for a slave device to respond to a request is defined by the device manufacturer. Based on this response time, the master can be configured to wait a certain amount of time for a slave's response. If no response is received within the specified time, the master will disregard the request and continue operation. This allows the Modbus system to continue the operation even if a slave device is disconnected or faulty. On the MGate 5118, the Response timeout field is used to configure how long the gateway will wait for a response from a Modbus slave. Please refer to your device manufacturer's documentation to manually set the response timeout

Add Modbus Commands

Index	Name	Slave IP Address	Slave ID	Function	Address / Quantity	Trigger	Poll Interval	Endian Swap
-------	------	------------------	----------	----------	--------------------	---------	---------------	-------------

Parameter	Value	Default	Description
Name	(an alphanumeric string)	Command1	Max. 32 characters
Slave IP address	0.0.0.0 - 255.255.255.255	0.0.0.0	The IP address of a remote slave device.
Port	1 - 65535	502	The TCP port number of a remote slave device.
Slave ID	1 - 255	1	The Modbus slave ID
Function	1 – Read Coils 2 – Read Discrete Inputs 3 – Read Holding Registers 4 – Read Input Registers 5 – Write Single Coil 6 – Write Single Register 15 – Write Multiple Coils 16 – Write Multiple Registers 23 – Read/Write Multiple Registers		When a message is sent from a Client to a Server device, the function code field tells the server what kind of action to perform.
Trigger	Cyclic Data Change Disable		Disable: The command is never sent Cyclic: The command is sent cyclically at the interval specified in the Poll Interval parameter. Data change: The data area is polled for changes at the time interval defined by Poll Interval. A command is issued when a change in data is detected.
Poll interval	100 - 1200000 ms	1000	Polling intervals are in milliseconds. Since the module sends all requests in turns, the actual polling interval also depends on the number of requests in the queue and their parameters. The range is from

Parameter	Value	Default	Description
			500 to 1,200,000 ms.
Endian swap	None Byte Word Byte and Word	None	Data Byte Swapping None: Don't need to swap Byte: 0x0A, 0x0B, 0x0C, 0x0D becomes 0x0D, 0x0C, 0x0B, 0x0A. Word: 0x0A, 0x0B, 0x0C, 0x0D becomes 0x0C, 0x0D, 0x0A, 0x0B. ByteWord: 0x0A, 0x0B, 0x0C, 0x0D becomes 0x0D, 0x0C, 0x0B, 0x0A. There are two phases in changing ByteWord: 1) 0x0A, 0x0B, 0x0C, 0x0D becomes 0x0B, 0x0A, 0x0D, 0x0C 2) 0x0B, 0x0A, 0x0D, 0x0C becomes 0x0D, 0x0C, 0x0B, 0x0A
Read starting address	0 - 65535	0	Modbus register address.
Read quantity		10	Specifying how many quantities to read.
Write starting address	0 - 65535	0	Modbus register address.
Write quantity		1	Specifying how many quantities to write.
Fault protection	Keep latest data Clear all data bits to 0 Set to user defined value		If the opposite side connection fails, the gateway will not be able to receive data, but the gateway will continuously send output data to the Modbus TCP server device. To avoid problems in case the opposite side fails, the MGate 5118 can be configured to react in one of three ways: keep latest data, clear data to zero, user-defined value.
Fault value		00 00	The value for Set to user defined value.
Fault timeout	1 - 86400 s	3600	Defines the communication timeout for the opposite side.

3. Modbus TCP Server (Slave) Settings

⚙️ Modbus TCP Settings

Role: Server

Server Settings

Unit ID: (1 - 255)

TCP port:

Server Settings

Parameter	Value	Default	Description
Unit ID	1 - 255	1	The Modbus slave ID that this slave module will accept.
TCP port	1 - 65535	502	The TCP port number.

4. Modbus RTU/ASCII (Master) Settings

⚙️ Modbus RTU/ASCII Settings

Role: Master

Mode:

Master Settings

Initial delay: (0 - 30000 ms)

Max. retry: (0 - 5)

Response timeout: (10 - 120000 ms)

Inter-frame delay: (10 - 500 ms, 0: default)

Inter-character timeout: (10 - 500 ms, 0: default)

Modbus Commands

Index	Name	Slave ID	Function	Address / Quantity	Trigger	Poll Interval	Endian Swap
-------	------	----------	----------	--------------------	---------	---------------	-------------

Master Settings

Parameter	Value	Default	Description
Initial delay	0 - 30000 ms	0	Some Modbus slaves may take more time to boot up than other devices. In some environments, this may cause the entire system to suffer from repeated exceptions during the initial boot-up. After booting up, you can force the MGate to wait before sending the first request with the Initial Delay setting.

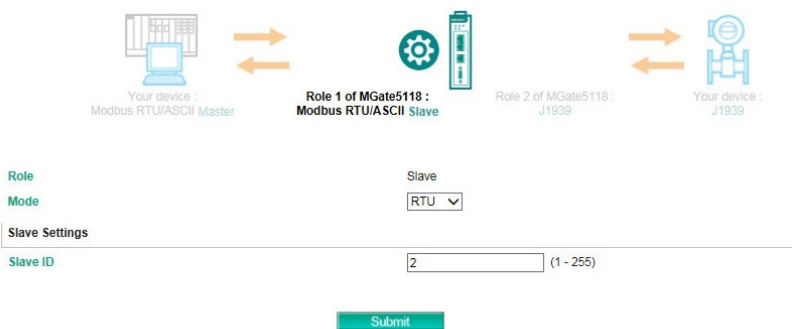
Parameter	Value	Default	Description
Max. retry	0 - 5	3	The number of times the master will retry the same request when the response times out.
Response timeout	10 - 120000 ms	1000	According to the Modbus standard, the time it takes for a slave device to respond to a request is defined by the device manufacturer. Based on this response time, a master can be configured to wait a certain amount of time for a slave's response. If no response is received within the specified time, the master will disregard the request and continue operation. This allows the Modbus system to continue operations even if a slave device is disconnected or faulty. On the MGate 5118, the Response timeout field is used to configure how long the gateway will wait for a response from a Modbus ASCII or RTU slave. Please refer to your device manufacturer's documentation to manually set the response time.
Inter-frame delay (only for Modbus RTU)	10 - 500 ms	0	Use this function to determine the timeout interval between characters for Modbus devices that cannot receive Rx signals within an expected time interval. If the response is timed out, all received data will be discarded. The MGate 5118 will automatically determine the timeout interval if the timeout value is set to 0.
Inter-character timeout (only for Modbus RTU)	10 - 500 ms	0	The users can determine the time delay to transmit the data frame received from the slave device to the upstream. The MGate 5118 will automatically determine the time interval if it is set to 0.

Add Modbus Commands

Please refer to 2. Modbus TCP Client (Master) Settings

5. Modbus RTU/ASCII (Slave) Settings

↳ **Modbus RTU/ASCII Settings**



Slave Settings

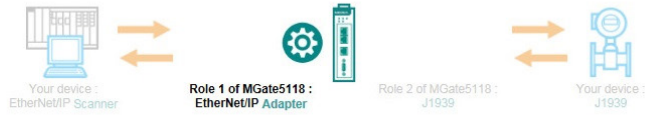
Parameter	Value	Default	Description
Slave ID	1 - 255	2	The Modbus slave ID that this slave module will accept.

6. EtherNet/IP Setting

The MGate 5118 supports Adapter and Scanner modes for EtherNet/IP protocol.

Adapter Mode:

⚙️ EtherNet/IP



Mode selection Adapter

EIP encapsulation inactivity timeout 120 (0 - 3600 sec, 0 for disable)

Connection1 Adapter Settings

O → T instance 100

T → O instance 110

I/O data size configuration Automatic

Connection2 Adapter Settings

O → T instance 101

T → O instance 111

I/O data size configuration Automatic

Connection3 Adapter Settings

O → T instance 102

T → O instance 112

I/O data size configuration Automatic

Connection4 Adapter Settings

O → T instance 103

T → O instance 113

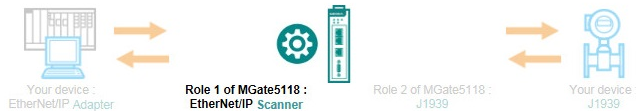
I/O data size configuration Automatic

[Submit](#)

You can select Automatic for I/O data size configuration to automatically map O→T (Originator to Target) and T→O (Target to Originator) data sizes with J1939 data. Moreover, the MGate 5118 supports a maximum of four connections to have a higher data capacity.

Scanner Mode:

⚙️ EtherNet/IP



Mode selection Scanner

EIP encapsulation inactivity timeout 120 (0 - 3600 sec, 0 for disable)

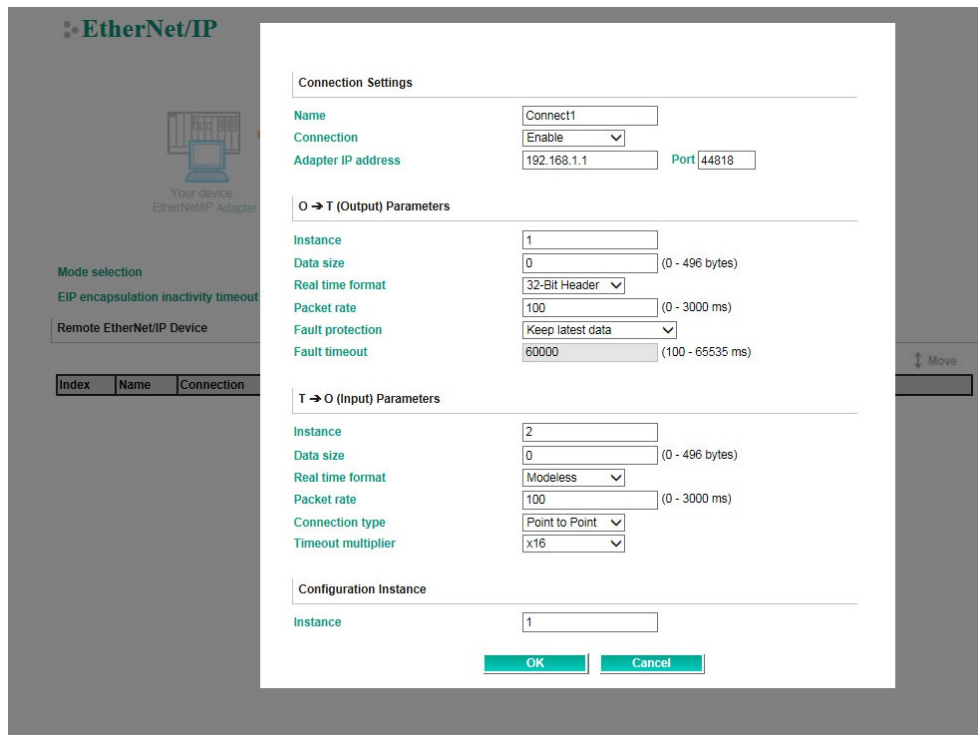
Remote EtherNet/IP Device

[Add](#)
[Edit](#)
[Clone](#)
[Delete](#)
[Move](#)

Index	Name	Connection	Adapter IP Address	O → T (Output) Parameters	T → O (Input) Parameters

[Submit](#)

In **Scanner mode**, all EtherNet/IP connections will be shown in a table. For the initial setup, click **Add** to create a new connection.



Parameter	Value	Notes
Name	50 bps to 961200 bps	
Connection	Enable, Disable	Enable or Disable this connection.
Adapter IP address and Port	IP address Port: 1 to 65535	Default EtherNet/IP port is 44818
Instance	1 to 2147483647	Instance number
Data size	O->T: 0 to 496 T->O: 0 to 496	
Real time formats	Modeless, 32-bit header	Default O->T format is 32-Bit Header. Default T->O format is Modeless.
Packet rate	0 to 3000 ms	Command polling interval time.
Connection type	Point to point, Multicast	When using a Multicast connection, Target (i.e., EtherNet/IP Adapter) must reply to the Multicast IP address for the MGate to listen.
Timeout multiplier	x4, x8, x16, x32, x64, x128, x512	Timeout value = packet rate x timeout multiplier (e.g., for packet rate = 100 ms and timeout multiplier = 16, the connection timeout = 1,600 ms).
Fault protection	Keep latest data Clear data to zero User-define value	Keep latest data: The gateway will write the same data to the slave device. Clear data to zero: The gateway will write zero values to the slave device. Fault User-define value: A user-defined value will be written

Parameter	Value	Notes
		to the slave device.
Fault timeout	60000	To set how long the gateway will wait to activate this function.

7. PROFINET Setting

The MGate 5118 can play the role of PROFINET IO-Device. All you have to set is the Device name of the MGate.

⚙️ PROFINET Settings



Configuration

Device Name


I/O Data Mapping

You can verify the gateway’s memory allocation on the **I/O Data Mapping** page. Select the Modbus data flow you want to see.


⚙️ I/O Data Mapping

Data flow direction Modbus RTU/ASCII Master <-- J1939


Mapping address arrangement Automatic ▾




Your device :
Modbus RTU/ASCII Master




read




Role 1 of MGate5118 :
Modbus RTU/ASCII Slave



read



Role 2 of MGate5118 :
J1939



Your device :
J1939

Name	Slave ID	Modbus Address	Name	Address	PGN	Offset	Internal Address	Data Size
Command1	254	4x0001~4x0001	Command1	255	512	0	<input type="text" value="0"/> <input type="text" value="0"/>	1 bytes

System Management

This configuration tab includes several system level settings. Most of these settings are optional.

Accessible IP Settings

Accessible IP List

Enable the accessible IP list ("Disable" will allow all IP's connection)

Index	Active	IP	NetMask
1	<input type="checkbox"/>	<input type="text"/>	<input type="text"/>
2	<input type="checkbox"/>	<input type="text"/>	<input type="text"/>
3	<input type="checkbox"/>	<input type="text"/>	<input type="text"/>
4	<input type="checkbox"/>	<input type="text"/>	<input type="text"/>
5	<input type="checkbox"/>	<input type="text"/>	<input type="text"/>
6	<input type="checkbox"/>	<input type="text"/>	<input type="text"/>
7	<input type="checkbox"/>	<input type="text"/>	<input type="text"/>
8	<input type="checkbox"/>	<input type="text"/>	<input type="text"/>
9	<input type="checkbox"/>	<input type="text"/>	<input type="text"/>
10	<input type="checkbox"/>	<input type="text"/>	<input type="text"/>
11	<input type="checkbox"/>	<input type="text"/>	<input type="text"/>
12	<input type="checkbox"/>	<input type="text"/>	<input type="text"/>
13	<input type="checkbox"/>	<input type="text"/>	<input type="text"/>
14	<input type="checkbox"/>	<input type="text"/>	<input type="text"/>
15	<input type="checkbox"/>	<input type="text"/>	<input type="text"/>
16	<input type="checkbox"/>	<input type="text"/>	<input type="text"/>

These settings are used to restrict access to the module by IP address. Only IP addresses on the list will be allowed access to the device. You may add a specific address or range of addresses by using a combination of IP address and netmask, as follows:

To allow access to a specific IP address

Enter the IP address in the corresponding field; enter 255.255.255.255 for the netmask.

To allow access to hosts on a specific subnet

For both the IP address and netmask, use 0 for the last digit (e.g., "192.168.1.0" and "255.255.255.0").

To allow access to all IP addresses

Make sure that **Enable** the accessible IP list is not checked.

Additional configuration examples are shown in the following table:

Desired IP Range	IP Address Field	Netmask Field
Any host	Disable	Enable
192.168.1.120	192.168.1.120	255.255.255.255
192.168.1.1 to 192.168.1.254	192.168.1.0	255.255.255.0
192.168.1.1 to 192.168.255.254	192.168.0.0	255.255.0.0
192.168.1.1 to 192.168.1.126	192.168.1.0	255.255.255.128
192.168.1.129 to 192.168.1.254	192.168.1.128	255.255.255.128

DoS Defense

To avoid a DoS attack, some configurations can be set accordingly. They include Null Scan, Xmas Scan, NMAP-Xmas Scan, SYN/FIN Scan, FIN Scan, NMAP-ID Scan, and SYN/RST Scan. The SYN-Flood and ICMP-Death can also be set on this page.

⚙️ DoS Defense

Configuration	
Null Scan	<input type="checkbox"/>
Xmas Scan	<input type="checkbox"/>
NMAP-Xmas Scan	<input type="checkbox"/>
SYN/FIN Scan	<input type="checkbox"/>
FIN Scan	<input type="checkbox"/>
NMAP-ID Scan	<input type="checkbox"/>
SYN/RST Scan	<input type="checkbox"/>

SYN-Flood	
Enable	<input type="checkbox"/>
Limit	<input type="text" value="4000"/> (pkt/s)

ICMP-Death	
Enable	<input type="checkbox"/>
Limit	<input type="text" value="4000"/> (pkt/s)

System Log Settings

⚙️ System Log Settings

Event Group	Syslog	Local Log	Summary
System	<input type="checkbox"/>	<input type="checkbox"/>	System cold start, System warm start
Network	<input type="checkbox"/>	<input type="checkbox"/>	DHCP/BOOTP get IP/renew, NTP connect fail, IP conflict, Network link down
Configuration	<input type="checkbox"/>	<input type="checkbox"/>	Login fail, IP changed, Password changed, Firmware upgrade, SSL certificate import, Config import, Config export, Configuration change, Clear event log
Modbus TCP	<input type="checkbox"/>	<input type="checkbox"/>	Modbus TCP communication logs
J1939	<input type="checkbox"/>	<input type="checkbox"/>	J1939 communication logs
EtherNet/IP	<input type="checkbox"/>	<input type="checkbox"/>	EtherNet/IP communication logs
PROFINET	<input type="checkbox"/>	<input type="checkbox"/>	PROFINET communication logs

Local Log Settings	
<input type="checkbox"/> Enable log capacity warning at	<input type="text" value="0"/> (%)
Warning by:	<input checked="" type="checkbox"/> SNMP Trap <input checked="" type="checkbox"/> Email
Event log oversize action :	<input type="text" value="Overwrite The Oldest Event Log"/>

Syslog Settings	
Syslog server IP	<input type="text"/>
Syslog server port	<input type="text" value="514"/>

These settings enable the MGate firmware to record important events for future verification. The recorded information can only be displayed on the web console.

The available information that can be recorded includes the following events:

Event Group	Description
System	System Cold Start, System Warm Start
Configuration	Login Fail, IP Changed, Password Changed, Firmware Upgrade, SSL Certificate Import, Configuration Import/Export
Modbus TCP	Modbus TCP Communication logs
J1939	J1939 communication logs
EtherNet/IP	EtherNet/IP communication logs
PROFINET	PROFINET communication logs

Local Log Settings	Description
Enable log capacity warning (%)	When the log amount exceeds the warning percentage, it will trigger an event to SNMP Trap or Email.
Warning by	SNMP Trap Email
Event log oversize action	Overwrites the oldest event log Stops recording event log
Syslog Settings	Description
Syslog server IP	IP address of a server which will record the log data.
Syslog server port	514

Auto Warning Settings

Auto Warning Settings

System Event			
Cold start	Mail <input type="checkbox"/>	Trap <input type="checkbox"/>	
Warm start	Mail <input type="checkbox"/>	Trap <input type="checkbox"/>	
Power1 input failure	Mail <input type="checkbox"/>	Trap <input type="checkbox"/>	Relay <input type="checkbox"/>
Power2 input failure	Mail <input type="checkbox"/>	Trap <input type="checkbox"/>	Relay <input type="checkbox"/>
LAN1 link down	Mail <input type="checkbox"/>	Trap <input type="checkbox"/>	Relay <input type="checkbox"/>
LAN2 link down	Mail <input type="checkbox"/>	Trap <input type="checkbox"/>	Relay <input type="checkbox"/>
Config Event			
Console login fail	Mail <input type="checkbox"/>	Trap <input type="checkbox"/>	
IP changed	Mail <input type="checkbox"/>		
Password changed	Mail <input type="checkbox"/>		

Submit

Auto Warning is triggered by different events. When a checked trigger condition occurs, the MGate can send e-mail alerts, SNMP Trap messages, or open/close the circuit of the relay output and trigger the Fault LED to start blinking. To enable an e-mail alert, configure the e-mail address on the **E-mail Alert** page. Likewise, to enable SNMP Trap alerts, configure SNMP trap server on the **SNMP Trap** page.

E-mail Alert Settings

E-Mail Alert

Mail Settings

Mail server (SMTP)

My server requires authentication

User name

Password

From e-mail address

To e-mail address 1

To e-mail address 2

To e-mail address 3

To e-mail address 4

Parameters	Description
Mail server	The mail server's domain name or IP address.
User name	This field is for your mail server's user name, if required.
Password	This field is for your mail server's password, if required.
From e-mail address	This is the e-mail address from which automatic e-mail warnings will be sent.
To e-mail address 1 to 4	This is the e-mail address or addresses to which the automatic e-mail warnings will be sent.

SNMP Trap Settings

SNMP Trap

SNMP Trap

SNMP trap server IP or domain name

Trap community

Parameters	Description
SNMP trap server IP	Use this field to indicate the IP address to use for receiving SNMP traps.
Trap community	Use this field to designate the SNMP trap community.

SNMP Agent Settings

SNMP Agent

SNMP Settings

SNMP

Read community string

Contact name

Location

Parameters	Description
SNMP	To enable the SNMP Agent function, select the Enable option, and enter a community name (e.g., public).
Read community string	This is a text password mechanism that is used to weakly authenticate queries to agents of managed network devices.
Contact name	The optional SNMP contact information usually includes an emergency contact name and telephone or pager number.
Location	For storing the SNMP's location information.

LLDP Settings

LLDP Settings

Configuration

LLDP

Message transmit interval (5 - 16383 secs)

Parameters	Description
Message Transmit Interval	The default time is 30 seconds. The allowable range is between 5 and 16,383 seconds.

Certificate

Certificate

SSL Certificate

Issued to 192.168.127.254

Issued by 192.168.127.254

Valid from 2016/6/5 to 2026/6/3

Select SSL certificate file

Delete SSL certificate file

Use this function to load the Ethernet SSL certificate. Select or browse for the certificate file in the Select SSL certificate/key file field. This function is only available in the web console.

Misc. Settings

This page includes console settings, password, and relay output.

Console Settings

⚙️ Console Settings

Configurations	
HTTP console	Enable ▾
HTTPS console	Enable ▾
Telnet console	Enable ▾
SSH console	Enable ▾
Serial console	Enable ▾
Reset button	Always enable ▾
MOXA Command	Enable ▾
Session Settings	
Maximum Login User For HTTP+HTTPS	5 (1 ~ 10)
Auto Logout Setting	5 (0 ~ 1440 min, 0 for Disable)

Submit

Configuration	Value	Description
HTTP/HTTPS	Enable/Disable	This setting is to enable/disable the web console. For security issues, users can only enable the HTTPS or just disable all settings.
Telnet/SSH	Enable/Disable	
Serial console	Enable/Disable	
Reset button protect	Disable after 60 sec, Always enable	The MGate provides the reset button to clear password or load factory default settings. But for security issues, users can disable this function. In disabled mode, the MGate will still enable this function within 60 seconds after boot-up, just in case users really need to reset this function.
MOXA command	Enable/Disable	

Session Settings	Value	Description
Maximum Login User for HTTP+HTTPS	1 - 10	
Auto Logout Setting	0 - 1440 min.	Set the auto logout time period.

Notification Message

⚙️ Notification Message

Notification Message

Login message

0 character/Maximum 240 character

Login authentication failure message

The account or password you entered is incorrect.
(Your account will be temporarily locked if excessive tried.)

111 character/Maximum 240 character

Users can input a message for Login or for Login authentication failure message.

Account Management

⚙️ Account Management

Add Account Settings

+ Add
✎ Edit
🗑 Delete

Account Name	Group
admin	admin
user	user

Submit

Parameters	Value	Description
Account	admin, user	Users can modify the password for different accounts. Now the MGate provides two different level accounts: admin and user . The admin account can access and modify all the settings through the web console. The user account can only view the setting and can't change anything.

Login Password Policy

⚙️ Login Password Policy

Account Password Policy

Minimum length (4 ~ 16)

Enable password complexity strength check

- At least one digit(0-9)
- Mixed upper and lower case letters(A-Z, a-z)
- At least one special character: ~!@#%&*_-_|:;,.<>{}()

Password lifetime (90 ~ 180 days)

Account Login Failure Lockout

Enable

Retry failure threshold (1 ~ 10 time)

Lockout time (1 ~ 60 min)

Account Password Policy	Value	Description
Minimum length	4-16	
Enable password complexity strength check		Select how the MGate checks the password's strength
Password lifetime	90-180 days	Set the password's lifetime period.

Account Login Failure Lockout	Value	Description
Retry failure threshold	1-10 time	
Lockout time	1-60 min	

System Management – Maintenance

Ping

This network testing function is available only in the web console. The MGate gateway will send an ICMP packet through the network to a specified host, and the result can be viewed in the web console immediately.

⚙️ Ping Test

Ping Destination

Destination

Firmware Upgrade

Firmware updates for the MGate 5118 are located at www.moxa.com. After you have downloaded the new firmware onto your PC, you can use the web console to write it onto your MGate 5118. Select the desired unit from the list in the web console and click **Upgrade Firmware** to begin the process.

⚙️ Firmware Upgrade

!!! Warning !!!

Note: Firmware upgrade will discard your un-saved configuration changes and restart the system!

Select firmware file

Submit



ATTENTION

DO NOT turn off the MGate power before the firmware upgrade process is completed. The MGate will be erasing the old firmware to make room for the new firmware to flash memory. If you power off the MGate and terminate the progress, the flash memory will contain corrupted firmware and the MGate will fail to boot. If this happens, call Moxa RMA services.

Configuration Import/Export

There are three main reasons for using the Import and Export functions:

- **Applying the same configuration to multiple units.** The Import/Export configuration function is a convenient way to apply the same settings to units located in different sites. You can export the configuration as a file and then import the configuration file onto other units at any time.
- **Backing up configurations for system recovery.** The export function allows you to export configuration files that can be imported onto other gateways to restore malfunctioning systems within minutes.
- **Troubleshooting.** Exported configuration files can help administrators to identify system problems that provide useful information for Moxa’s Technical Service Team when maintenance visits are requested.

⚙️ Configuration Import/Export

Configuration Import

Select configuration file

Keep IP settings

Import

Configuration Export

Export

⚙️ Configuration Import/Export

Configuration Import

Select configuration file

Keep IP settings

Import

Configuration Export

Export

Load Factory Default

To clear all the settings on the unit, use the Load Factory Default to reset the unit to its initial factory default values.

⚙️ Load Factory Default

Click on **Submit** to reset all settings, including the console password, to the factory default values. To leave the IP address, netmask and gateway settings unchanged, make sure that **Keep IP settings** is enabled.

Reset to Factory Default

Keep IP settings

Submit



ATTENTION

Load Default will completely reset the configuration of the unit, and all of the parameters you have saved will be discarded. Do not use this function unless you are sure you want to completely reset your unit.

System Monitoring – System Status

Network Connections

Go to **Network Connections** under **System Status** to view network connection information.

⚙️ Network Connections

Auto refresh

Protocol	Recv-Q	Send-Q	Local Address	Foreign Address	State
TCP	0	0	*:4900	*:0	LISTEN
TCP	0	0	*:80	*:0	LISTEN
TCP	0	0	*:502	*:0	LISTEN
TCP	0	0	*:22	*:0	LISTEN
TCP	0	0	*:23	*:0	LISTEN
TCP	0	0	*:443	*:0	LISTEN
TCP	0	0	192.168.127.254:80	192.168.127.222:5980	ESTABLISHED
UDP	0	0	*:161	*:0	
UDP	0	0	*:4800	*:0	

System Log

Go to **Network Connections** under **System Status** to view network connection information.

⚙️ System Log

System Log

Export Clear log Refresh

Relay State

The MGate gateway includes a built-in relay circuit that is triggered in the event of a power failure or if the Ethernet link is down. You can view the relay status on this page.

⚙️ Relay State

Auto refresh

Power input 1 failure	N/A	Acknowledge Event
Power input 2 failure	N/A	Acknowledge Event
Ethernet 1 link down	N/A	Acknowledge Event
Ethernet 2 link down	N/A	Acknowledge Event

LLDP Table

You can see LLDP related information, including Port, Neighbor ID, Neighbor Port, Neighbor Port Description, and Neighbor System.

⚙️ LLDP Table

Port	Neighbor ID	Neighbor Port	Neighbor Port Description	Neighbor System
sw0	ks-hsu01	port-001		KS-HSU01

System Monitoring – Protocol Status

I/O Data View

This page displays the internal memory information for input and output data transfers. View updated values for communication verification here. This function is only available in the web console.

⚙️ I/O Data View

Auto refresh

Data flow direction: Modbus TCP Client --> DNP3 Serial Master Start address(Hex): Length: Format:

Internal Address	00	01	02	03	04	05	06	07	08	09	0A	0B	0C	0D	0E	0F
0000h	00	00	00	00	00	00	00	00	00	00	00	00	00	00	00	00
0010h	00	00	00	00	00	00	00	00	00	00	00	00	00	00	00	00
0020h	00	00	00	00	00	00	00	00	00	00	00	00	00	00	00	00
0030h	00	00	00	00	00	00	00	00	00	00	00	00	00	00	00	00
0040h	00	00	00	00	00	00	00	00	00	00	00	00	00	00	00	00
0050h	00	00	00	00	00	00	00	00	00	00	00	00	00	00	00	00
0060h	00	00	00	00	00	00	00	00	00	00	00	00	00	00	00	00
0070h	00	00	00	00	00	00	00	00	00	00	00	00	00	00	00	00

Diagnose

The MGate provides status information for DNP3, Modbus RUB/ASCII, and Modbus TCP troubleshooting. Verify data or packet counters to make sure the communications are running smoothly.

Modbus RTU/ASCII Diagnose (Master)

⚙️ Modbus RTU/ASCII Diagnose

Auto refresh

Category	Item	Value
Modbus	Mode	RTU Master
	Sent request	0
	Received valid response	0
	Received invalid response	0
	Received CRC/LRC Error	0
	Received exception	0
	Timeout	0

Serial Port
Port is not opened.

Modbus RTU/ASCII Diagnose (Slave)

⚙️ Modbus RTU/ASCII Diagnose

Auto refresh

Category	Item	Value
Modbus	Mode	RTU Slave
	Slave ID	2
	Received valid request	0
	Received invalid request	0
	Received CRC/LRC error	0
	Sent response	0
	Sent exception	0

Serial Port
Port number 1
Break 0
Frame error 0
Parity error 0
Overrun error 0

Modbus TCP Diagnose (Client/Master)

⚙️ Modbus TCP Diagnose

Auto refresh

Category	Item	Value
Modbus	Mode	Master
	Number of connection	0
	Sent request	0
	Received valid response	0
	Received invalid response	0
	Received exception	0
	Timeout	0

Connections

Modbus TCP Diagnose (Slave/Server)

⚙️ Modbus TCP Diagnose

Auto refresh

Category	Item	Value
Modbus		
	Mode	Slave
	Number of connection	0
	Received valid request	0
	Received invalid request	0
	Sent response	0
	Sent exceptions	0
Connections		

J1939 Diagnose

⚙️ J1939 Diagnose

Auto refresh

Category	Item	Value
CAN bus		
	State	normal
	Baudrate	250k bps
	Bus-off count	0
	Transmit error count	0
	Receive error count	0
J1939		
	Network address	129
	Sent message	0
	Received message	301

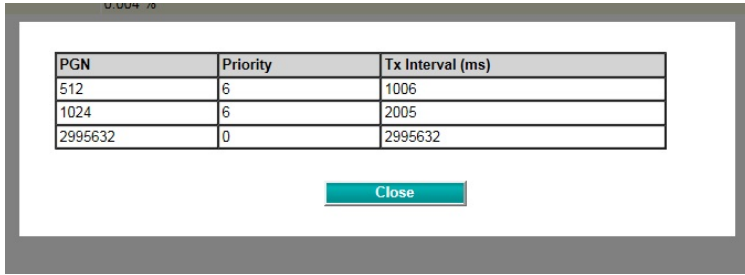
PROFINET Diagnose

⚙️ PROFINET Diagnose

Auto refresh

Category	Item	Value
PLC Status	Connected PLC MAC Address	N/A
	PLC Operation Mode	STOP
Parameters	Sender clock (packet interval)	0 ms
	Device name	
I/O Slot		

And you may also click on the **Question** icon for more detail.



Fault Protection and Status Monitoring

Fault Protection

The Fault Protection function sends a predefined setting to field devices to prevent incorrect actions when the upstream connection is lost. The MGate 5118 supports a Fault Protection function when in agent mode. You can configure the criteria used to determine what to do when the write command is no longer received from the master side. For example, when a cable comes loose accidentally, the most up-to-date write command from the master side will not be received by the gateway. Hence, the slave device will use the latest command from the gateway, which is now out-of-date, creating an inconsistency between the master and slave devices. To avoid this problem, the MGate 5118 supports options to determine which actions should be taken when the master’s side is disconnected from the gateway.

Options	Description
Keep latest data	The gateway will write the same data to the slave device.
Clear data to zero	The gateway will write zero values to the slave device.
User-define value	A user-defined value will be written to the slave device.

Status Monitoring

The **Status Monitoring** function provides status information of field devices when the MGate is being used as a master/client. If a slave device fails or a cable comes loose, generally the gateway won’t be able to receive up-to-date data from the slave device. The out-of-date data will be stored in the gateway’s memory and will be retrieved by the master device (e.g., PLC), which will not be aware that the slave device is not providing up-to-date data. The MB3660 supports the **Status Monitoring** function, which provides a warning mechanism to report the list of slave devices that are still “alive.”

The MGate 5118 allocates one bit of the gateway’s specified memory address to indicate the status of each J1939 command as being normal or abnormal. If a command has run successfully, the status value will continuously be 1. On the contrary, if a command has failed, the status will be set to 0. In this case, the master device will be aware of the failure status of the slave device

	Modbus RTU/ASCII/TCP	PROFINET	EtherNet/IP
Method	Modbus function code: 0x03 or 0x04	Acyclic read	Through UCMM with Class ID 0x405, Instance ID 1, Attribute 0.
Data address	60000	30000	
Data Unit	word byte	byte	

For example, if there are 32 J1939 commands, the status monitoring of these 32 commands is to read the data address as below:

	Modbus RTU/ASCII/TCP	PROFINET
Data address	60000~60001	30000~30003
Remark.	6000 represents command 1~16, 60001 represents command 17~32,	3000 represents command 1~8, 30001 represents command 9~16, 30002 represents command 17~24, 30003 represent command 25~32

Restart

All changes will be activated by clicking the **Submit** button first and then restarting the gateway. If a lot of settings need to be changed, you can click **Submit** for each setting and then click **Restart** to activate all the changes.

⚙️ **Restart**

!!! Warning !!!

Clicking "Submit" will disconnect Ethernet connections and reboot the system.

Submit

Logout

For safety reasons, remember to log out of the web utility to prevent people who do not have the proper authorization from accessing the gateway.

MXView

The Moxa MXview network management software gives you a convenient graphical representation of your Ethernet network and allows you to configure, monitor, and diagnose Moxa networking devices. MXview provides an integrated management platform that can manage Moxa MGate series products as well as Ethernet switches and wireless APs, and SNMP-enabled and ICMP-enabled devices installed on subnets. MXview includes an integrated MIB complier that supports any third-party MIB. It also allows you to monitor third-party OIDs and Traps. Network and Trap components that have been located by MXview can be managed via web browsers from both local and remote sites—anytime, anywhere.

MXconfig

Moxa's MXconfig is a comprehensive Windows-based utility that is used to install, configure, and maintain multiple Moxa devices in industrial networks. This suite of useful tools helps users set the IP addresses of multiple devices with one click, configure the redundant protocols and VLAN settings, modify multiple network configurations of multiple Moxa devices, upload firmware to multiple devices, export/import configuration files, copy configuration settings across devices, easily link to web and telnet consoles, and test device connectivity. MXconfig gives device installers and control engineers a powerful and easy way to mass configure devices, and effectively reduces the setup and maintenance cost.

For more detailed information regarding MXview, download the MXview user's manual from Moxa's website at <http://www.moxa.com>.